

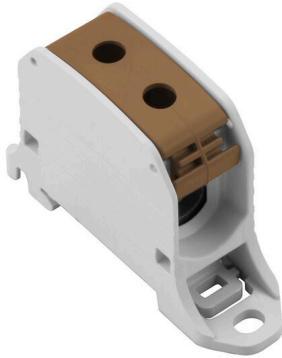
**WPD 130 1X50/1X50 BN****Weidmüller Interface GmbH & Co. KG**

Klingenbergstraße 26

D-32758 Detmold

Germany

www.weidmueller.com

**Product image**

Klippon® Connect power feed-in terminal blocks WPD allow for an easy and safe installation of aluminium and copper conductors on a small footprint. A power supply or monitoring connection can also be used as an option. Customers can use the power feed-in terminal blocks WPD, regardless of the conductor material. They can be mounted either directly or on DIN rail TS35.

**General ordering data**

|            |  |
|------------|--|
| Version    | Potential distributor terminal, Screw connection, brown, 50 mm <sup>2</sup> , 150 A, 1000 V, Number of connections: 2, Number of levels: 1 |
| Order No.  | <a href="#">2502560000</a>   |
| Type       | WPD 130 1X50/1X50 BN   |
| GTIN (EAN) | 4050118516289  |
| Qty.       | 9 items  |

## WPD 130 1X50/1X50 BN

**Weidmüller Interface GmbH & Co. KG**  
 Klingenbergstraße 26  
 D-32758 Detmold  
 Germany

www.weidmueller.com

## Technical data

### Approvals

Approvals



|                         |                            |
|-------------------------|----------------------------|
| ROHS                    | Conform                    |
| UL File Number Search   | <a href="#">UL Website</a> |
| Certificate No. (cURus) | E60693                     |

### Dimensions and weights

|            |       |                 |             |
|------------|-------|-----------------|-------------|
| Depth      | 45 mm | Depth (inches)  | 1.7716 inch |
| Height     | 70 mm | Height (inches) | 2.7559 inch |
| Width      | 22 mm | Width (inches)  | 0.8661 inch |
| Net weight | 39 g  |                 |             |

### Temperatures

|                                  |                |                                  |                |
|----------------------------------|----------------|----------------------------------|----------------|
| Storage temperature              | -25 °C...55 °C | Ambient temperature              | -50 °C...75 °C |
| Continuous operating temp., min. | -50 °C         | Continuous operating temp., max. | 120 °C         |

### Environmental Product Compliance

|                        |                             |
|------------------------|-----------------------------|
| RoHS Compliance Status | Compliant without exemption |
| REACH SVHC             | No SVHC above 0.1 wt%       |

### Material data

|                           |       |        |       |
|---------------------------|-------|--------|-------|
| Basic material            | Wemid | Colour | brown |
| UL 94 flammability rating | V-0   |        |       |

### Rating data IECEx/ATEX

|                                |                    |                         |                  |
|--------------------------------|--------------------|-------------------------|------------------|
| Certificate No. (ATEX)         | CNEX18ATEX0016U    | Certificate No. (IECEX) | IECEXNEX18.0010U |
| Max. voltage (ATEX)            | 880 V              | Current (ATEX)          | 150 A            |
| Wire cross section max. (ATEX) | 50 mm <sup>2</sup> | Max. voltage (IECEX)    | 880 V            |
| Current (IECEX)                | 150 A              |                         |                  |

### System specifications

|                                     |                  |                                   |       |
|-------------------------------------|------------------|-----------------------------------|-------|
| Version                             | Screw connection | End cover plate required          | No    |
| Number of potentials                | 1                | Number of levels                  | 1     |
| Number of clamping points per level | 2                | Levels cross-connected internally | No    |
| PE connection                       | No               | Mounting rail                     | TS 35 |
| PE function                         | No               |                                   |       |

### Additional technical data

|                     |                                |                          |     |
|---------------------|--------------------------------|--------------------------|-----|
| Installation advice | Terminal rail / mounting plate | Explosion-tested version | Yes |
| Type of mounting    | Snap-on                        |                          |     |

**WPD 130 1X50/1X50 BN**

**Weidmüller Interface GmbH & Co. KG**  
 Klingenbergstraße 26  
 D-32758 Detmold  
 Germany

www.weidmueller.com

**Technical data**

**Conductors for clamping (additional connection)**

Connection type, additional connection Screw connection

**Conductors for clamping (rated connection)**

|   |                     |   |                    |
|---|---------------------|---|--------------------|
| Wire connection cross section AWG, max.   | AWG 1/0             | Connection direction  | on side            |
| Type of connection 2  | Screw connection    | Type of connection  | Screw connection   |
| Number of connections   | 2                   | Clamping range, max.  | 50 mm <sup>2</sup> |
| Clamping range, min.  | 2.5 mm <sup>2</sup> | Wire connection cross section AWG, min.   | AWG 10             |
| Wire connection cross-section, finely stranded with wire-end ferrules DIN 46228/4, min. | 2.5 mm <sup>2</sup> | Wire connection cross-section, finely stranded with wire-end ferrules DIN 46228/1, max. | 35 mm <sup>2</sup> |
| Wire connection cross-section, finely stranded with wire-end ferrules DIN 46228/1, min. | 2.5 mm <sup>2</sup> | Wire connection cross section, finely stranded, max.                                    | 50 mm <sup>2</sup> |
| Wire connection cross section, finely stranded, min.                                    | 2.5 mm <sup>2</sup> | Connection cross-section, stranded, max.  | 50 mm <sup>2</sup> |
| Connection cross-section, stranded, min. 2.5 mm <sup>2</sup>                            |                     | Wire connection cross-section, solid core, max.   | 50 mm <sup>2</sup> |
| Wire connection cross-section, solid core, min.   | 2.5 mm <sup>2</sup> |   |                    |

**General**

|                     |                                |   |         |
|---------------------|--------------------------------|---|---------|
| Number of poles     | 1                              | Wire connection cross section AWG, max. | AWG 1/0 |
| Installation advice | Terminal rail / mounting plate | Wire connection cross section AWG, min. | AWG 10  |
| Standards           | IEC 60947-7-1, UL 1059, CSA    | Mounting rail                           | TS 35   |

**Rating data**

|                                 |                             |  |         |
|---------------------------------|-----------------------------|--|---------|
| Rated cross-section             | 50 mm <sup>2</sup>          | Rated voltage                                | 1000 V  |
| Rated AC voltage                | 1000 V                      | Rated DC voltage                             | 1000 V  |
| Nominal current                 | 150 A                       | Current at maximum wires                     | 150 A   |
| Standards                       | IEC 60947-7-1, UL 1059, CSA | Volume resistance according to IEC 60947-7-x | 0.21 mΩ |
| Rated impulse withstand voltage | 8 kV                        | Power loss in accordance with IEC 60947-7-x  | 4.80 W  |
| Surge voltage category          | III                         | Pollution severity                           | 3       |

**UL rating data**

Certificate No. (cURus) E60693

**Important note**

Product information You will find additional information in the downloadsection of the onlinecatalogue

**Classifications**

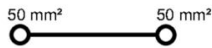
|             |             |             |             |
|-------------|-------------|-------------|-------------|
| ETIM 8.0    | EC000897    | ETIM 9.0    | EC000897    |
| ETIM 10.0   | EC000897    | ECLASS 14.0 | 27-25-01-19 |
| ECLASS 15.0 | 27-25-01-19 |             |             |

WPD 130 1X50/1X50 BN

Weidmüller Interface GmbH & Co. KG  
 Klingenbergstraße 26  
 D-32758 Detmold  
 Germany

Drawings

www.weidmueller.com



Conductor connection data according to IEC 60947-7-1 (Cu)

| Input (x1) / Output (x1)                             | Copper  |   | Aluminum  |   |
|--|---|---|---|---|
|  |  |  |  |  |
| 50 mm <sup>2</sup>                                   | 10 Nm   | 10 Nm   | 14 Nm   | 14 Nm   |
| 35 mm <sup>2</sup>                                   |   | 10 Nm   |   |   |
| 25 mm <sup>2</sup>                                   | 8 Nm  | 8 Nm  | 12 Nm   | 10 Nm   |
| 16 mm <sup>2</sup>                                   |   |   | 10 Nm   |   |
| 10 mm <sup>2</sup>                                   |   |   |   |   |
| 6 mm <sup>2</sup>                                    | 6 Nm  | 6 Nm  |   |   |
| 4 mm <sup>2</sup>                                    |   |   |   |   |
| 2.5 mm <sup>2</sup>                                  |   |   |   |   |
| max. current with 2x50 mm <sup>2</sup> (acc. to IEC) | 300 A   |   | 270 A   |   |
| Stripping lengths                                    | 16 mm   |   |   |   |
| Allen screw  | M10 (SW 5 mm)   |   |   |   |

 Stranded     
  Solid     
  Flexible with ferrule     
  Sector shaped

Conductor connection data according to UL 1059 (Al+Cu)

| Input (x1) / Output (x1)                            | Copper  |   | Aluminum  |   |
|---|---|---|---|---|
|   |  |  |  |  |
| AWG 1/0   |   |   | 123.9Lb In.   | 123.9Lb In.   |
| AWG 2   |   |   |   |   |
| AWG 4   | 123.9Lb In.   |   |   |   |
| AWG 6   |   | 123.9Lb In.   |   |   |
| AWG 8   |   |   |   |   |
| AWG 10  |   |   |   |   |
| AWG 12  |   |   |   |   |
| max. current at 1 x 50 mm <sup>2</sup> (acc. to UL) | 150 A   |   | 120 A   |   |
| Stripping lengths                                   | 16 mm   |   |   |   |
| Allen screw   | M10 (SW 5 mm)   |   |   |   |

 Stranded     
  Solid     
  Flexible with ferrule     
  Sector shaped

