

HV4000/3-M12 F

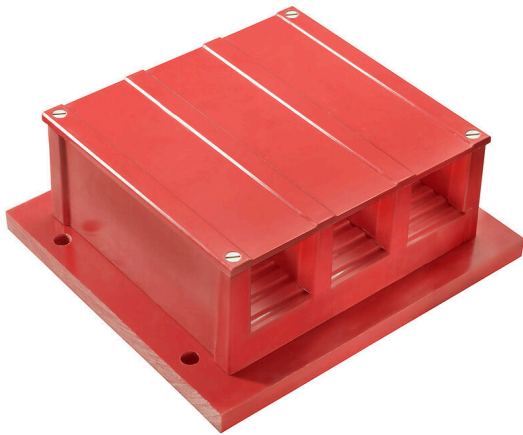
Weidmüller Interface GmbH & Co. KG

Klingenbergstraße 26

D-32758 Detmold

Germany

www.weidmueller.com



The efficient and reliable distribution of electrical power in a challenging environment requires interface solutions that are optimally designed for the special characteristics of a particular application. Perfect interplay is what you get with our high-current terminal solutions combined with Klippon® Protect enclosures in a weather-proof design. Our HV 2700 und HV 4000 high-voltage terminals provide you with a modular and scalable system which, thanks to the ring cable lug connection system, is a globally recognised and proven railway technology and easy to install anywhere in the world. The products are tested and comply with the requirements of the technical standards EN 50155, EN 50124-1, EN 45545 and IEC 61373. Our products are subject to ongoing product monitoring and development.

We have put together a small selection for you, but we are happy to configure a bespoke solution. Customised installation

The challenges for the future are reducing costs and increasing efficiency. This requires intelligent, individual solutions which are tailored to your requirements. In our application spectrum

we offer you a highly qualified customer-specific manufacturing service.

Whether you need modified products, pre-assembled terminal rails or complete small cabinets: we produce the solutions developed for your application quickly and flexibly.

General ordering data

| | |
|------------|--|
| Version | Bolt-type screw terminals, Feed-through terminal, Screw connection |
| Order No. | 2496050000 |
| Type | HV4000/3-M12 F |
| GTIN (EAN) | 4050118538373 |
| Qty. | 1 items |

HV4000/3-M12 F

Weidmüller Interface GmbH & Co. KG

Klingenbergstraße 26

D-32758 Detmold

Germany

www.weidmueller.com

Technical data

Approvals

| | |
|------|---------|
| ROHS | Conform |
|------|---------|

Dimensions and weights

| | | | |
|----------------------------|--------|-----------------------------|-------------|
| Depth | 220 mm | Depth (inches) | 8.6614 inch |
| Height | 96 mm | Height (inches) | 3.7795 inch |
| Width | 240 mm | Width (inches) | 9.4488 inch |
| Diameter | 12 mm | Mounting dimension - height | 130 mm |
| Mounting dimension - width | 240 mm | Net weight | 4900 g |

Temperatures

| | | | |
|----------------------------------|--------|----------------------------------|--------|
| Continuous operating temp., min. | -50 °C | Continuous operating temp., max. | 140 °C |
|----------------------------------|--------|----------------------------------|--------|

Environmental Product Compliance

| | |
|------------------------|-----------------------------|
| RoHS Compliance Status | Compliant without exemption |
| REACH SVHC | No SVHC above 0.1 wt% |

Material data

| | | | |
|---------------------------|----------------------------------|--------|-----|
| Basic material | Glass fibre-reinforced polyester | Colour | red |
| UL 94 flammability rating | V-0 | | |

System specifications

| | | | |
|-------------------------------|----------------|-------------------------------------|----|
| End cover plate required | No | Number of potentials | 3 |
| Number of levels | 1 | Number of clamping points per level | 3 |
| Number of potentials per tier | 1 | Levels cross-connected internally | No |
| Mounting rail | Mounting plate | | |

Additional technical data

| | | | |
|--------------------------|----|------------------|----------------|
| Explosion-tested version | No | Type of mounting | Mounting plate |
|--------------------------|----|------------------|----------------|

Conductors for clamping (rated connection)

| | | | |
|--|---------------------------|--|---------------------------|
| Cable lug to DIN 46234 | 10...240 mm ² | Wire connection cross section AWG, max. | AWG 16 |
| Connection direction | top | Tightening torque, max. | 65 Nm |
| Tightening torque, min. | 63 Nm | Type of connection | Screw connection |
| Number of connections | 6 | Clamping range, max. | 240 mm ² |
| Clamping range, min. | 10 mm ² | Clamping range, bolted connection , max. | 240.00 mm ² |
| Clamping range, bolted connection , min. | 10 mm ² | Clamping screw | M 12 |
| Wire connection cross section AWG, min. | AWG 6 | Wire connection cross section, finely stranded, max. | 240 mm ² |
| Wire connection cross section, finely stranded, min. | 10 mm ² | Stud size for spade connection | M 12 |
| Wire connection cross-section, solid core, max. | 240 mm ² | Connection cross-section, finely stranded, max. | 240 mm ² |
| Connection cross-section, finely stranded, min. | 10 mm ² | 2 x cable lugs DIN 46 235 | 25 to 240 mm ² |
| 2 x cable lugs DIN 46 234 | 25 to 240 mm ² | | |

HV4000/3-M12 F

Weidmüller Interface GmbH & Co. KG
 Klingenbergstraße 26
 D-32758 Detmold
 Germany

www.weidmueller.com

Technical data

Dimensions

| | |
|----------|-------|
| Diameter | 12 mm |
|----------|-------|

General

| | | | |
|---|----------------|---|---|
| Number of poles | 2 | Wire connection cross section AWG, max. | AWG 16 |
| Operating temperature range, max. | 140 °C | Operating temperature range, min. | -50 °C |
| Wire connection cross section AWG, min. | AWG 6 | Standards | EN 45545-2:2020, NFPA 130 ASTM E 162/ 662, BSS 7239/ 7242 |
| Mounting rail | Mounting plate | | |

Rating data

| | | | |
|--|---|--|--------|
| Rated cross-section | 240 mm ² | Rated voltage | 4000 V |
| Rated DC voltage | 4000 V | Voltage with epoxy resin partition plate | 4000 V |
| Nominal current | 600 A | Current at maximum wires | 600 A |
| Standards | EN 45545-2:2020, NFPA 130 ASTM E 162/ 662, BSS 7239/ 7242 | Rated impulse withstand voltage | 30 kV |
| Impulse voltage with epoxy resin partition plate | 30 kV | Pollution severity | 3 |

Classifications

| | | | |
|-------------|-------------|-------------|-------------|
| ETIM 8.0 | EC000897 | ETIM 9.0 | EC000897 |
| ETIM 10.0 | EC000897 | ECLASS 14.0 | 27-25-01-01 |
| ECLASS 15.0 | 27-25-01-01 | | |