

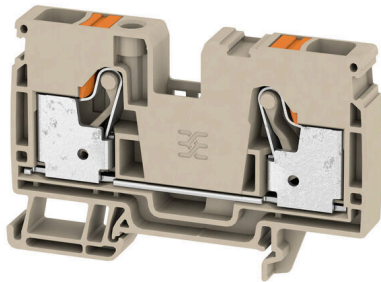
A2C 10**Weidmüller Interface GmbH & Co. KG**

Klingenbergstraße 26

D-32758 Detmold

Germany

www.weidmueller.com

Product image

To feed through power, signal, and data is the classical requirement in electrical engineering and panel building. The insulating material, the connection system and the design of the terminal blocks are the differentiating features. A feed-through terminal block is suitable for joining and/or connecting one or more conductors. They could have one or more connection levels that are on the same potential or insulated against one another.

General ordering data

| | |
|------------|---|
| Version | Feed-through terminal, PUSH IN, 10 mm ² , 1000 V, 57 A, dark beige |
| Order No. | 2490360000 |
| Type | A2C 10 |
| GTIN (EAN) | 4050118500813 |
| Qty. | 25 items |

A2C 10

Weidmüller Interface GmbH & Co. KG

Klingenbergstraße 26
D-32758 Detmold
Germany

www.weidmueller.com

Technical data

Approvals

Approvals



| | |
|---------------------------|----------------------------|
| ROHS | Conform |
| UL File Number Search | UL Website |
| Certificate No. (cURus) | E60693 |
| Certificate No. (cURusEX) | E184763 |

Dimensions and weights

| | | | |
|--------------------------|-------------|----------------|-------------|
| Depth | 51.5 mm | Depth (inches) | 2.0276 inch |
| Depth including DIN rail | 52.5 mm | Height | 80.5 mm |
| Height (inches) | 3.1693 inch | Width | 10 mm |
| Width (inches) | 0.3937 inch | Net weight | 32.31 g |

Temperatures

| | | | |
|----------------------------------|----------------|----------------------------------|---------------|
| Storage temperature | -25 °C...55 °C | Ambient temperature | -5 °C...40 °C |
| Continuous operating temp., min. | -60 °C | Continuous operating temp., max. | 130 °C |

Environmental Product Compliance

| | |
|------------------------|-----------------------------|
| RoHS Compliance Status | Compliant without exemption |
| REACH SVHC | No SVHC above 0.1 wt% |

Material data

| | | | |
|--------------------------------|--------|---------------------------|------------|
| Basic material | Wemid | Colour | dark beige |
| Colour of operational elements | orange | UL 94 flammability rating | V-0 |

Rating data IECEx/ATEX

| | | | |
|--------------------|---------------|---------------------|----------|
| Marking EN 60079-7 | Ex eb II C Gb | Ex 2014/34/EU label | II 2 G D |
|--------------------|---------------|---------------------|----------|

System specifications

| | | | |
|-------------------------------|-------|-------------------------------------|----|
| End cover plate required | Yes | Number of potentials | 1 |
| Number of levels | 1 | Number of clamping points per level | 2 |
| Number of potentials per tier | 1 | Levels cross-connected internally | No |
| Mounting rail | TS 35 | | |

Additional technical data

| | | | |
|---------------------|-------|--------------------------|---------|
| With snap-in pegs | No | Open sides | right |
| Snap-on | No | Type of fixing | Snap-on |
| Installation advice | Rail | Explosion-tested version | Yes |
| Type of mounting | TS 35 | | |

A2C 10

Weidmüller Interface GmbH & Co. KG
 Klingenbergstraße 26
 D-32758 Detmold
 Germany

www.weidmueller.com

Technical data

CSA rating data

| | | | |
|-------------------------------|--------|-----------------------|-----------------|
| Wire cross section max. (CSA) | 6 AWG | Voltage size C (CSA) | 600 V |
| Current size C (CSA) | 55 A | Certificate No. (CSA) | 200039-70089609 |
| Voltage size B (CSA) | 600 V | Current size B (CSA) | 55 A |
| Voltage size D (CSA) | 600 V | Current size D (CSA) | 5 A |
| Wire cross section min. (CSA) | 20 AWG | | |

Conductors for clamping (additional connection)

Connection type, additional connection PUSH IN

Conductors for clamping (rated connection)

| | | | |
|---|--|--------------------|---------------------|
| Gauge to IEC 60947-1 | A6 | | |
| Wire connection cross section AWG, max. | AWG 6 | | |
| Connection direction | top | | |
| Stripping length | 18 mm | | |
| Type of connection | PUSH IN | | |
| Number of connections | 2 | | |
| Clamping range, max. | 16 mm ² | | |
| Clamping range, min. | 0.5 mm ² | | |
| Blade size | 1.0 x 5.5 mm | | |
| Wire connection cross section AWG, min. | AWG 20 | | |
| Wire connection cross-section, finely stranded with wire-end ferrules DIN 46228/4, max. | 10 mm ² | | |
| Wire connection cross-section, finely stranded with wire-end ferrules DIN 46228/4, min. | 0.5 mm ² | | |
| Wire connection cross-section, finely stranded with wire-end ferrules DIN 46228/1, max. | 10 mm ² | | |
| Wire connection cross-section, finely stranded with wire-end ferrules DIN 46228/1, min. | 0.5 mm ² | | |
| Wire connection cross section, finely stranded, max. | 16 mm ² | | |
| Wire connection cross section, finely stranded, min. | 0.5 mm ² | | |
| Connection cross-section, stranded, max. | 16 mm ² | | |
| Connection cross-section, stranded, min. | 0.5 mm ² | | |
| Twin wire-end ferrules, max. | 4 mm ² | | |
| Twin wire-end ferrules, min. | 0.5 mm ² | | |
| Wire connection cross-section, solid core, max. | 10 mm ² | | |
| Wire connection cross-section, solid core, min. | 0.5 mm ² | | |
| Connection cross-section, finely stranded, min. | 0.5 mm ² | | |
| Tube length for wire-end ferrule with plastic collar DIN 46228/4 | Tube length | min. | 18 mm |
| | Cross-section for conductor connection | min. | 1.5 mm ² |
| | | max. | 4 mm ² |
| | Tube length | min. | 12 mm |
| | | max. | 18 mm |
| | Cross-section for conductor connection | min. | 6 mm ² |
| max. | | 10 mm ² | |

A2C 10

Weidmüller Interface GmbH & Co. KG

Klingenbergstraße 26
D-32758 Detmold
Germany

www.weidmueller.com

Technical data

| | | | |
|---|--|----------------------|----------------------|
| Tube length for twin wire-end ferrule | Tube length | nominal | 18 mm |
| | Cross-section for conductor connection | min. | 0.75 mm ² |
| | | max. | 1 mm ² |
| | Tube length | min. | 12 mm |
| max. | | 18 mm | |
| Cross-section for conductor connection | min. | 1.5 mm ² | |
| | max. | 4 mm ² | |
| Tube length for wire-end ferrule without plastic collar DIN 46228/1 | Tube length | nominal | 18 mm |
| | Cross-section for conductor connection | min. | 1.5 mm ² |
| | | max. | 10 mm ² |
| Tube length for wire-end ferrule with plastic collar acc. to cross-section | Cross-section, min. | 1.5 mm ² | |
| | Cross-section, max. | 4 mm ² | |
| | Tube length, min. | 18 mm | |
| | Tube length, max. | 18 mm | |
| | Cross-section, min. | 6 mm ² | |
| | Cross-section, max. | 10 mm ² | |
| | Tube length, min. | 12 mm | |
| | Tube length, max. | 18 mm | |
| Tube length for wire-end ferrule without plastic collar acc. to cross-section | Cross-section, min. | 1.5 mm ² | |
| | Cross-section, max. | 10 mm ² | |
| | Tube length, min. | 18 mm | |
| Tube length for twin wire-end ferrule acc. to cross-section | Cross-section, min. | 0.75 mm ² | |
| | Cross-section, max. | 1 mm ² | |
| | Tube length, min. | 18 mm | |
| | Tube length, max. | 18 mm | |
| | Cross-section, min. | 1.5 mm ² | |
| | Cross-section, max. | 4 mm ² | |
| | Tube length, min. | 12 mm | |
| | Tube length, max. | 18 mm | |

General

| | | | |
|---|--------|---------------------|------------------|
| Wire connection cross section AWG, max. | AWG 6 | Installation advice | Rail |
| Wire connection cross section AWG, min. | AWG 20 | Standards | DIN EN 60947-7-1 |
| Mounting rail | TS 35 | | |

Rating data

| | | | |
|--|--------------------|---------------------------------|------------------|
| Rated cross-section | 10 mm ² | Rated voltage | 1000 V |
| Rated DC voltage | 1000 V | Nominal current | 57 A |
| Current at maximum wires | 57 A | Standards | DIN EN 60947-7-1 |
| Volume resistance according to IEC 60947-7-x | 0.56 mΩ | Rated impulse withstand voltage | 8 kV |
| Power loss in accordance with IEC 60947-7-x | 1.82 W | Surge voltage category | III |
| Pollution severity | 3 | | |

UL rating data

| | | | |
|--|--------|--|--------|
| Conductor size Factory wiring max. (cURus) | 6 AWG | Voltage size B (cURus) | 600 V |
| Voltage size D (cURus) | 600 V | Certificate No. (cURus) | E60693 |
| Conductor size Field wiring min. (cURus) | 20 AWG | Conductor size Factory wiring min. (cURus) | 20 AWG |
| Current size B (cURus) | 55 A | Voltage size C (cURus) | 600 V |
| Current size C (cURus) | 55 A | Current size D (cURus) | 5 A |
| Conductor size Field wiring max. (cURus) | 6 AWG | | |

Technical data

Classifications

| | | | |
|-------------|-------------|-------------|-------------|
| ETIM 8.0 | EC000897 | ETIM 9.0 | EC000897 |
| ETIM 10.0 | EC000897 | ECLASS 14.0 | 27-25-01-01 |
| ECLASS 15.0 | 27-25-01-01 | | |

Drawings

