

PRO TOPDC 24V/24V 10A EX

Weidmüller Interface GmbH & Co. KG
Klingenbergstraße 26
D-32758 Detmold
Germany

www.weidmueller.com



PROtop DCDC converters are used for safe electrical isolation to avoid ground loops that can occur when supplying field devices in production or process plants. DCDC converters can be used on long supply lines to refresh the supply voltage. The integrated ORing MOSFET reliably decouples possible internal short circuits. It allows direct parallel connection of ACDC and DCDC converters of the PROtop series for redundancy purposes or to increase power. This makes the use of the otherwise common diode or redundancy modules obsolete. Furthermore, PROtop DCDC converters feature the powerful DCL technology – and their communication module allows full data transparency and remote control.

General ordering data

Version	DC/DC converter
Order No.	2467300000
Type	PRO TOPDC 24V/24V 10A EX
GTIN (EAN)	4050118482201
Qty.	1 items

PRO TOPDC 24V/24V 10A EX

Weidmüller Interface GmbH & Co. KG
 Klingenbergstraße 26
 D-32758 Detmold
 Germany

www.weidmueller.com

Technical data

Approvals

Approvals



ROHS Conform

Dimensions and weights

Depth	125 mm	Depth (inches)	4.9212 inch
Height	130 mm	Height (inches)	5.1181 inch
Width	43 mm	Width (inches)	1.6929 inch
Net weight	1000 g		

Temperatures

Storage temperature	-40 °C...85 °C	Operating temperature	-40 °C...70 °C
Humidity at operating temperature	5...100 % no condensation	Start-up	≥ -40 °C

Environmental Product Compliance

RoHS Compliance Status	Compliant with exemption
RoHS Exemption (if applicable/known)	6c, 7a, 7cl
REACH SVHC	Lead 7439-92-1
SCIP	6d8cdf22-8230-4af8-86c8-3558c716666d

Input

Connection system	Screw connection	
Rated input voltage	24 V DC	
Input voltage, max.	31.2 V	
Input voltage, min.	14 V	
Wire connection method	Screw connection	
Input fuse (internal)	Yes	
DC input voltage range	14 V...31.2 V (linear Derating from 18 V...14 V, 60% rated load @ Uin 14 V)	
Inrush current	Max. 10 A	
Inrush Current Limitation	Yes	
Current consumption in relation to the input voltage	Voltage type	DC
	Input voltage	24 V
	Input current	11 A
	Voltage type	DC
	Input voltage	18 V
	Input current	15 A
Nominal power consumption	263.7 VA	

Output

Output power	240 W
Connection system	Clamping yoke connection
Rated output voltage	24 V DC ± 1 %
Residual ripple, breaking spikes	<40 mVPP@25 °C

PRO TOPDC 24V/24V 10A EX

Weidmüller Interface GmbH & Co. KG

Klingenbergstraße 26
D-32758 Detmold
Germany

www.weidmueller.com

Technical data

Parallel connection option	yes, max 10	
Output voltage, max.	28.8 V	
Output voltage, min.	22.5 V	
Output current, max.	13 A	
Wire connection method	Screw connection	
Output voltage, note	adjustable with potentiometer or communication module	
Nominal output current for Unom	10 A @ 60 °C	
Capacitive load	unrestricted	
Mains failure bridge-over time	Mains failure bridge-over time, min.	10 ms
	Input voltage type	DC
	Input voltage	24 V
	Output current	10 A
	Output voltage	24 V
Protection against inverse voltage	Yes	
DCL - peak load reserve	Boost duration	15 ms
	Multiple of the rated current	600 %
	Boost duration	5 s
	Multiple of the rated current	200 %
Ramp-up time	≤ 100 ms	

General data

Degree of efficiency	91%	Protection degree	IP20
Surge voltage category	I, II, III	Mounting position, installation notice	On TS 35 mounting rail, 50 mm clearance above and below for free air supply.
Housing version	Metal, corrosion resistant	Derating	> 60°C (2.5% / 1°C)
Adjacent	No	Conformal coating	Yes
Power loss, idling	5 W	Short-circuit protection	Yes
Power loss, nominal load	23.7 W		

EMC / shock / vibration

Shock resistance IEC 60068-2-27	30 g in all directions	Noise emission in accordance with EN55032	Class B
Interference immunity test acc. to	EN 55032:2015, EN 55035:2017, EN 61000-6-1:2007, EN 61000-6-2:2005, EN 61000-6-3:2007/ A1:2011, EN 61000-6-4:2007/ A1:2011, IEC 61000-4-2, IEC 61000-4-3, DIN EN 61000-4-4, EN 61000-4-5:2005, EN 61000-4-6:2008, IEC 61000-4-8	Vibration resistance IEC 60068-2-6	2.3 g (on DIN rail), 4 g (with direct mounting)

Insulation coordination

Surge voltage category	I, II, III	Protection class	III, with no ground connection, for SELV
Insulation voltage, input/output	1.41 kV	Insulation voltage input / earth	1.41 kV
Insulation voltage output / earth	0.7 kV		

PRO TOPDC 24V/24V 10A EX

Weidmüller Interface GmbH & Co. KG
 Klingenbergstraße 26
 D-32758 Detmold
 Germany

www.weidmueller.com

Technical data

Electrical safety (applied standards)

Electrical machine equipment	Acc. to EN60204	Safety extra-low voltage	SELV acc. to IEC 60950-1, PELV according to EN 60204-1
Safety transformers for switch-mode power supplies	According to EN 61558-2-16		

Connection data (input)

Connection system	Screw connection	Number of terminals	2 for (+, -)
Screwdriver blade	0.6 x 3.5	Conductor cross-section, AWG/kcmil , max.	12 AWG
Conductor cross-section, AWG/kcmil , min.	30 AWG	Wire connection cross section, flexible (input), max.	4 mm ²
Conductor cross-section, flexible , min.	0.2 mm ²	Conductor cross-section, rigid , max.	4 mm ²
Conductor cross-section, rigid , min.	0.2 mm ²		

Connection data (output)

Connection system	Clamping yoke connection	Number of terminals	4 (++ / -)
Conductor cross-section, AWG/kcmil , max.	12 AWG	Conductor cross-section, AWG/kcmil , min.	30 AWG
Conductor cross-section, flexible , max.	4 mm ²	Conductor cross-section, flexible , min.	0.2 mm ²
Conductor cross-section, rigid , max.	4 mm ²	Conductor cross-section, rigid , min.	0.2 mm ²
Screwdriver blade	0.6 x 3.5		

Connection data (signal)

Wire connection cross-section, flexible (signal), max.	1.5 mm ²	Wire connection method	Screw connection
Wire cross-section, AWG/kcmil , max.	16	Wire cross-section, solid , min.	0.2 mm ²
Wire cross-section, solid , max.	1.5 mm ²	Wire connection cross-section, flexible (signal), min.	0.2 mm ²
Wire cross-section, AWG/kcmil , min.	28 mm ²		

Signalling

Floating contact	Yes	LED green/red	Green: Operation (failure-free), Flashing green: advance warning I>90%, Green/red flashing: output switched off (switch-off mode), Flashing red: overload/error
Status relay (max. load)	Output voltage OK (30 V DC / 1 A)		

Classifications

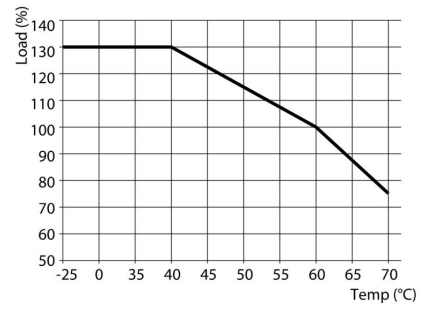
ETIM 8.0	EC002540	ETIM 9.0	EC002540
ETIM 10.0	EC002540	ECLASS 14.0	27-04-07-01
ECLASS 15.0	27-04-07-01		

PRO TOPDC 24V/24V 10A EX

Weidmüller Interface GmbH & Co. KG
Klingenbergstraße 26
D-32758 Detmold
Germany

www.weidmueller.com

Drawings



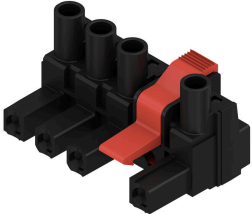
PRO TOPDC 24V/24V 10A EX

Weidmüller Interface GmbH & Co. KG
 Klingenbergstraße 26
 D-32758 Detmold
 Germany

www.weidmueller.com

Accessories

BLZ 7.62IT/180MF

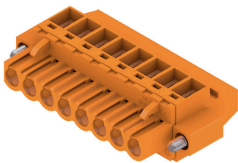


180° female plug with a 7.62 pitch for IT power networks. Meets the requirements of UL1059 600 V class C. In combination with male header SL 7.62 IT... With leading contact. Meets the extended requirements on 5.5 mm touch safety for IT power networks as per IEC 61800-5-1 for 400 V to earth. The self-locking middle flange which can optionally be screwed, reduces space requirements by one pitch width in comparison with conventional solutions. On request also available without middle flange interlock.

General ordering data

Type	BLZ 7.62IT/02/180MF2 SN...	Version
Order No.	1173490000	PCB plug-in connector, female plug, 7.62 mm, Number of poles: 2,
GTIN (EAN)	4032248965991	180°, Clamping yoke connection, Clamping range, max. : 4 mm², Box
Qty.	70 ST	

BLZP 5.00HC/90F SN



Female plugs with clamping-yoke connection for connecting wires with a right-angle (90° or 270°) outlet direction. The female connectors provide space for labelling and can be coded. Fastened by means of a flange or release latch. They also provide an integrated plus/minus screw, protection against faulty insertion of the wire, and they are delivered with open clamping yokes. HC = High Current.

General ordering data

Type	BLZP 5.00HC/04/90F SN B...	Version
Order No.	2568290000	PCB plug-in connector, female plug, 5.00 mm, Number of poles: 4,
GTIN (EAN)	4050118578812	90°, Clamping yoke connection, Clamping range, max. : 4 mm², Box
Qty.	72 ST	

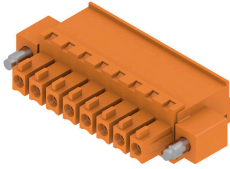
PRO TOPDC 24V/24V 10A EX

Weidmüller Interface GmbH & Co. KG
 Klingenbergstraße 26
 D-32758 Detmold
 Germany

www.weidmueller.com

Accessories

BCZ 3.81/270F



Female socket connectors with clamping-yoke screw system for connecting wires.

Three wire-outlet directions are available and provide flexible connection-level design options:

- 180° wire parallel to plugging direction
- 90° wire perpendicular and above plugging direction
- 270° wire perpendicular and below plugging direction

There are three housing shapes, covering many different requirements, to choose from:

- Standard housing without flange
- Flange with screw (F)
- Flange featuring Weidmüller's patented release latch (LR) for lock-and-release latching with no strain and no tools needed.

Weidmüller's 3.81-mm-pitch (0.15 inch) plug-in connectors are compatible with the layouts of customary connectors and offer space for labelling and coding.

General ordering data

Type	BCZ 3.81/03/270F SN BK ...	Version
Order No.	2569240000	PCB plug-in connector, female plug, 3.81 mm, Number of poles: 3,
GTIN (EAN)	4050118592436	180°, Clamping yoke connection, Clamping range, max. : 1.5 mm ² ,
Qty.	50 ST	Box