

PRO TOP2 240W 24V 10A UW EX

Weidmüller Interface GmbH & Co. KG
 Klingenbergstraße 26
 D-32758 Detmold
 Germany

www.weidmueller.com



Production processes constantly need to be made more efficient. As well as performance, energy efficiency and sustainability are also playing an increasingly important role in cutting-edge industry. PROtop power supplies combine excellent performance data with exemplary sustainability, which has a positive impact on the productivity of the entire production facility.

PROtop offers a number of advantages that give you a real competitive edge. These include the permanent reduction of energy costs thanks to high efficiencies as well as the increase in plant availability due to long service life and high MTBF values. In addition, there is a high functional density due to the extremely spacesaving designs.

PROtop can achieve significant savings compared to conventional power supply units. Its increased efficiency saves an average of 50 kWh per day in a medium-sized production facility with approx. 100 PROtop power supplies working in three-shift operation. This adds up to over 15,000 kWh a year and also improves the facility's carbon footprint. The service life, which is twice as long as that of standard power supplies, also sustainably reduces the costs of repurchase and exchange.

General ordering data

Version	Power supply, switch-mode power supply unit, 24 V
Order No.	2467260000
Type	PRO TOP2 240W 24V 10A UW EX
GTIN (EAN)	4050118482164
Qty.	1 items

PRO TOP2 240W 24V 10A UW EX

Weidmüller Interface GmbH & Co. KG
 Klingenbergstraße 26
 D-32758 Detmold
 Germany

www.weidmueller.com

Technical data

Approvals

Approvals



ROHS Conform

Dimensions and weights

Depth	125 mm	Depth (inches)	4.9212 inch
Height	130 mm	Height (inches)	5.1181 inch
Width	50 mm	Width (inches)	1.9685 inch
Net weight	1060 g		

Temperatures

Storage temperature	-40 °C...85 °C	Operating temperature	-40 °C...75 °C
Humidity at operating temperature	5...95 %, no condensation		

Environmental Product Compliance

RoHS Compliance Status	Compliant with exemption		
RoHS Exemption (if applicable/known)	6c, 7a, 7cl		
REACH SVHC	Lead 7439-92-1		
SCIP	6d8cdf22-8230-4af8-86c8-3558c716666d		

Input

Connection system	Clamping yoke		
AC input voltage range	85...550 V AC		
Recommended back-up fuse	5 A, DI / 6 A, Char. B / 6 A, Char C		
Frequency range AC	45...65 Hz		
Rated input voltage	100 - 500 V AC / 120 - 500 V DC		
Surge protection	Varistor		
Input fuse (internal)	Yes		
DC input voltage range	90...800 V DC		
Inrush current	Max. 10 A		
Current consumption in relation to the input voltage	Voltage type	AC	
	Input voltage	85 V	
	Input current	3.6 A	
Nominal power consumption	262.3 VA		

Output

Output power	240 W		
Connection system	Clamping yoke connection		
Rated output voltage	24 V DC ± 1 %		
Residual ripple, breaking spikes	<50 mVss @ UNenn, Full Load		
Parallel connection option	Yes, for redundancy and power increase (with ORing MOSFET)		
Output voltage, max.	28.8 V		
Output voltage, min.	22.5 V		
Output current, max.	10 A		

PRO TOP2 240W 24V 10A UW EX
Weidmüller Interface GmbH & Co. KG

 Klingenbergstraße 26
 D-32758 Detmold
 Germany

www.weidmueller.com
Technical data

Output voltage, note	adjustable with potentiometer or communication module	
Nominal output current for Unom	10 A @ 60 °C	
Mains failure bridge-over time	Mains failure bridge-over time, min.	20 ms
	Input voltage type	AC
	Input voltage	110 V
	Output current	10 A
	Output voltage	24 V
Protection against inverse voltage	Yes	
DCL - peak load reserve	Boost duration	15 ms
	Multiple of the rated current	600 %
Ramp-up time	≤ 100 ms	

General data

Degree of efficiency	91.5%	
Protection degree	IP20	
Surge voltage category	II, III	
Mounting position, installation notice	Horizontal on DIN rail TS 35, top and bottom 50 mm clearance for free air flow, 10 mm clearance to neighbouring subassemblies.	
Housing version	Metal, corrosion resistant	
Derating	> 60°C (2.5% / 1°C)	
Power factor	Power factor typical	0.75
	Input voltage	400 V
	Ambient temperature	25 °C
	Output power	120 W
Earth leakage current, max.	3.5 mA	
Conformal coating	Yes	
Power loss, idling	5 W	
Power loss, nominal load	18.1 W	

EMC / shock / vibration

Shock resistance IEC 60068-2-27	30 g in all directions	Noise emission in accordance with EN55032	Class B
Interference immunity test acc. to	EN 55032:2015, EN 61000-3-2:2019, EN 61000-6-3:2007/A1:2011, EN 61000-6-4:2007/A1:2011, EN 61000-3-3:2013+A1:2019, EN 55035:2017, EN 61000-6-1:2019, EN 61000-6-2:2019, IEC 61000-4-2:2008, IEC 61000-4-3:2006+A1:2007+A2:2010, IEC 61000-4-4:2012, IEC 61000-4-5:2014, IEC 61000-4-6:2013, IEC 61000-4-8:2009, IEC 61000-4-11:2004	Vibration resistance IEC 60068-2-6	2.3 g (on DIN rail), 4 g (with direct mounting)

Insulation coordination

Surge voltage category	II, III	Pollution severity	2
Protection class	I, with PE connection	Insulation voltage, input/output	3.5 kV
Insulation voltage input / earth	3.2 kV	Insulation voltage output / earth	0.5 kV

PRO TOP2 240W 24V 10A UW EX

Weidmüller Interface GmbH & Co. KG
 Klingenbergstraße 26
 D-32758 Detmold
 Germany

www.weidmueller.com

Technical data

Electrical safety (applied standards)

Electrical machine equipment	Acc. to EN60335-1	Safety extra-low voltage	SELV acc. to IEC 60950-1, PELV according to EN 60204-1
Safety transformers for switch-mode power supplies	According to EN 61558-2-16		

Connection data (input)

Connection system	Clamping yoke	Number of terminals	3 for L/N/PE
Conductor cross-section, AWG/kcmil , max.	12 AWG	Conductor cross-section, AWG/kcmil , min.	30 AWG
Wire connection cross section, flexible (input), max.	4 mm ²	Conductor cross-section, flexible , min.	0.2 mm ²
Conductor cross-section, rigid , max.	4 mm ²	Conductor cross-section, rigid , min.	0.2 mm ²

Connection data (output)

Connection system	Clamping yoke connection	Number of terminals	4 (++ / -)
Conductor cross-section, AWG/kcmil , max.	12 AWG	Conductor cross-section, AWG/kcmil , min.	30 AWG
Conductor cross-section, flexible , max.	4 mm ²	Conductor cross-section, flexible , min.	0.2 mm ²
Conductor cross-section, rigid , max.	4 mm ²	Conductor cross-section, rigid , min.	0.2 mm ²

Connection data (signal)

Wire connection cross-section, flexible (signal), max.	1.5 mm ²	Wire connection method	Screw connection
Wire cross-section, AWG/kcmil , max.	16	Wire cross-section, solid , min.	0.2 mm ²
Wire cross-section, solid , max.	1.5 mm ²	Wire connection cross-section, flexible (signal), min.	0.2 mm ²
Wire cross-section, AWG/kcmil , min.	28 mm ²		

Signalling

Floating contact	Yes	LED green/red	Green: Operation (failure-free), Flashing green: advance warning I>90%, Green/red flashing: output switched off (switch-off mode), Flashing red: overload/error
Status relay (max. load)	Output voltage OK (30 V DC / 1 A)		

Classifications

ETIM 8.0	EC002540	ETIM 9.0	EC002540
ETIM 10.0	EC002540	ECLASS 14.0	27-04-07-01
ECLASS 15.0	27-04-07-01		

PRO TOP2 240W 24V 10A UW EX

Weidmüller Interface GmbH & Co. KG
Klingenbergstraße 26
D-32758 Detmold
Germany

Drawings

www.weidmueller.com



PRO TOP2 240W 24V 10A UW EX

Weidmüller Interface GmbH & Co. KG
 Klingenbergstraße 26
 D-32758 Detmold
 Germany

www.weidmueller.com

Accessories

End bracket



Weidmüller's range of products includes end brackets that guarantee a permanent, reliable mounting on the terminal rail and prevent sliding. Versions with and without screws are available. The end brackets include marking options, also for group markers, and also a test plug holder.

General ordering data

Type	WEW 35/1 V0 GF SW	Version	
Order No.	1478990000	End bracket, black, TS 35, V-0, Wemid, Width: 12 mm, 130 °C	
GTIN (EAN)	4050118286892		
Qty.	50 ST		
Type	WEW 35/2 V0 GF SW	Version	
Order No.	1479000000	End bracket, black, TS 35, V-0, Wemid, Width: 8 mm, 130 °C	
GTIN (EAN)	4050118286779		
Qty.	50 ST		

Slotted screwdriver



VDE insulated screwdriver sets, for working on live parts up to 1000 V AC and 1500 V DC, DIN EN 60900. IEC 900. Each piece is "GS" safety tested. Blade made from fully hardened, high-alloy chromium-vanadium-molybdenum steel, gun-metal finish.

General ordering data

Type	SDIS SLIM 0.6X3.5X100	Version	
Order No.	2749610000	Mounting tool, Blade width (B): 3.5 mm, Blade length: 100 mm, Blade thickness (A): 0.6 mm	
GTIN (EAN)	4050118896350		
Qty.	1 ST		

Installation



Mounting accessory for Weidmüller Power Supplies.

PRO TOP2 240W 24V 10A UW EX

Weidmüller Interface GmbH & Co. KG
 Klingenbergstraße 26
 D-32758 Detmold
 Germany

www.weidmueller.com

Accessories

General ordering data

Type	PRO TOP BRACKETS	Version
Order No.	257590000	Mounting foot
GTIN (EAN)	4050118683059	
Qty.	1 ST	
Type	MTA 30 MF	Version
Order No.	125132000	Electronics housings, Mounting flange
GTIN (EAN)	4050118042702	
Qty.	20 ST	
Type	CP A WALLADAPTER 30 MM	Version
Order No.	146187000	
GTIN (EAN)	4050118268225	
Qty.	1 ST	

Communication modules



Weidmüller's plug-in communication modules enable individual components to exchange relevant data with the cloud. This lays the foundation for targeted process optimization using condition monitoring and remote controllability - factors that play a decisive role in increasing efficiency, quality, process stability and availability can contribute. The communication modules are designed according to IP20 protected, can be operated without tools and can be flexibly adapted to different customisable communication protocols.

General ordering data

Type	PRO COM CAN OPEN	Version
Order No.	246732000	Communication module
GTIN (EAN)	4050118482225	
Qty.	1 ST	
Type	PRO COM CAN OPEN EX	Version
Order No.	246734000	Communication module
GTIN (EAN)	4050118481822	
Qty.	1 ST	
Type	PRO COM DISPLAY 7S	Version
Order No.	246696000	Communication module
GTIN (EAN)	4050118481808	
Qty.	1 ST	
Type	PRO COM IO-LINK	Version
Order No.	258736000	Communication module
GTIN (EAN)	4050118599152	
Qty.	1 ST	

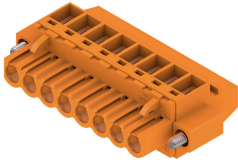
PRO TOP2 240W 24V 10A UW EX

Weidmüller Interface GmbH & Co. KG
 Klingenbergstraße 26
 D-32758 Detmold
 Germany

www.weidmueller.com

Accessories

BLZP 5.00HC/90F SN

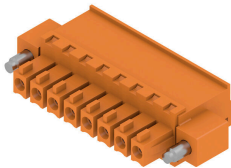


Female plugs with clamping-yoke connection for connecting wires with a right-angle (90° or 270°) outlet direction. The female connectors provide space for labelling and can be coded. Fastened by means of a flange or release latch. They also provide an integrated plus/minus screw, protection against faulty insertion of the wire, and they are delivered with open clamping yokes. HC = High Current.

General ordering data

Type	BLZP 5.00HC/04/90F SN B...	Version
Order No.	2568290000	PCB plug-in connector, female plug, 5.00 mm, Number of poles: 4,
GTIN (EAN)	4050118578812	90°, Clamping yoke connection, Clamping range, max. : 4 mm ² , Box
Qty.	72 ST	

BCZ 3.81/270F



Female socket connectors with clamping-yoke screw system for connecting wires. Three wire-outlet directions are available and provide flexible connection-level design options:

- 180° wire parallel to plugging direction
- 90° wire perpendicular and above plugging direction
- 270° wire perpendicular and below plugging direction

There are three housing shapes, covering many different requirements, to choose from:

- Standard housing without flange
- Flange with screw (F)
- Flange featuring Weidmüller's patented release latch (LR) for lock-and-release latching with no strain and no tools needed.

Weidmüller's 3.81-mm-pitch (0.15 inch) plug-in connectors are compatible with the layouts of customary connectors and offer space for labelling and coding.

General ordering data

Type	BCZ 3.81/03/270F SN BK ...	Version
Order No.	2569240000	PCB plug-in connector, female plug, 3.81 mm, Number of poles: 3,
GTIN (EAN)	4050118592436	180°, Clamping yoke connection, Clamping range, max. : 1.5 mm ² ,
Qty.	50 ST	Box

PRO TOP2 240W 24V 10A UW EX

Weidmüller Interface GmbH & Co. KG
 Klingenbergstraße 26
 D-32758 Detmold
 Germany

www.weidmueller.com

Accessories

BLZ 7.62HP/180F



Power on board - 100% safety, 100% integration, 100% cost-effectiveness:

The compact, efficient solution for UL-600V applications in the lower performance range up to 12kVA.

- 29 A at 630 V (IEC)
- 20 A at 600 V (UL)
- Single compartment mating profile
- Clamping range: 0.08 - 4 mm² / AWG 28 - 12

Assistance with device approval:

- meets the requirements for 600 V in accordance with UL508/UL840
- meets the more stringent touch-safety requirements of IEC68100-5-1

The slimming cure for multiple-stage device series: reduced size and cut costs in the high-volume lower performance range without compromising device approval!

General ordering data

Type	BLZ 7.62HP/03/180F SN B...	Version
Order No.	1095690000	PCB plug-in connector, female plug, 7.62 mm, Number of poles: 3,
GTIN (EAN)	4032248868827	180°, Clamping yoke connection, Clamping range, max. : 4 mm ² , Box
Qty.	45 ST	