

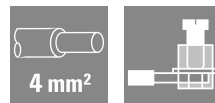
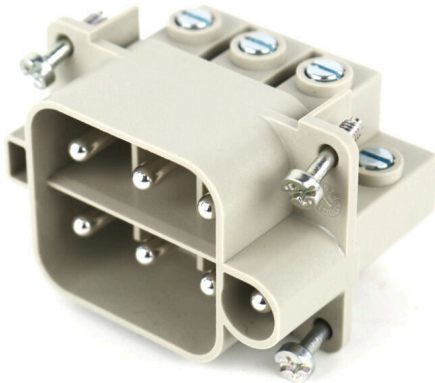
HDC AOC 6 MS**Weidmüller Interface GmbH & Co. KG**

Klingenbergstraße 26

D-32758 Detmold

Germany

www.weidmueller.com



A heavy-duty connector consists of a connector insert and its protective housing. The insert is therefore the heart of the heavy-duty connector. It is responsible for electrical functioning. Connector inserts from Weidmüller are made from high-quality insulation materials, which allow secure transmission of high voltages in a tight space. Moreover, we use only a single type of plastic in our entire product line. This plastic is UL listed, and suitable for railway applications. This allows unlimited worldwide use of the RockStar® connector.

General ordering data

Version	HDC insert, Pin, 500 V, 40 A, Number of poles: 6, Screw connection, Installation size: 3
Order No.	2466810000
Type	HDC AOC 6 MS
GTIN (EAN)	4050118501575
Qty.	1 items

HDC AOC 6 MS

Weidmüller Interface GmbH & Co. KG

Klingenbergstraße 26

D-32758 Detmold

Germany

www.weidmueller.com

Technical data

Approvals

ROHS	Conform
------	---------

Dimensions and weights

Depth	34.8 mm	Depth (inches)	1.3701 inch
Height	41.7 mm	Height (inches)	1.6417 inch
Width	51 mm	Width (inches)	2.0079 inch
Net weight	68.3 g		

Temperatures

Limit temperature	-40 °C ... 125 °C
-------------------	-------------------

Environmental Product Compliance

RoHS Compliance Status	Compliant with exemption
RoHS Exemption (if applicable/known)	6c
REACH SVHC	Lead 7439-92-1, Potassium perfluorobutane sulfonate 29420-49-3
SCIP	b67daa31-7dca-434d-8290-da7fb52f83a2

Dimensions

Width	51 mm	Total length base	34.8 mm
Height of socket	41.7 mm		

General data

Number of poles	6	Plugging cycles, silver	≥ 500
Plugging cycles, gold	≥ 500	Type of connection	Screw connection
Installation size	3	UL 94 flammability rating	V-0
Volume resistance	2.00 mΩ	Colour	Light Grey
Insulation resistance	≥ 10 ¹⁰ Ω	Insulating material	Polyester glass-fibre reinforced, Polycarbonate
Conductor cross-section	3 mm ²	Tightening torque, max. PE connection	1.5 Nm
Type	Pin	Pollution severity	3
Tightening torque, min. PE connection	1.2 Nm	Basic material	Polycarbonate, glass fibre reinforced
Series	AOC	Rated voltage (DIN EN 61984)	500 V
Rated impulse voltage (DIN EN 61984)	6 kV	Rated current (DIN EN 61984)	40 A
Free from halogens	false	Low smoke acc. DIN EN 45545-2	Yes
BG	3	Number of signal contacts	0

Connection data PE

Connection type PE	Screw connection	Stripping length PE connection	11 mm
Blade size, crosshead	0.6 x 3.5 mm	Tightening torque, max. PE connection	1.5 Nm
Tightening torque, min. PE connection	1.2 Nm	Fixing screw	M 4
Rated cross-section	4 mm ²	Wire cross section, AWG (PE), min.	AWG 16
Wire cross section, AWG (PE), max.	AWG 12		

Signal contact

Tightening torque, signal contact, max.	1.5 Nm	Tightening torque, signal contact, min.	1.2 Nm
---	--------	---	--------

HDC AOC 6 MS

Weidmüller Interface GmbH & Co. KG
 Klingenbergstraße 26
 D-32758 Detmold
 Germany

www.weidmueller.com

Technical data

Version

Wire connection cross section AWG, max.	AWG 12	Stripping length, rated connection	11 mm
Type of connection	Screw connection	Installation size	3
Volume resistance	2.00 mΩ	Wire connection cross section AWG, min.	AWG 16
Wire cross-section, solid, max.	4 mm ²	Wire cross-section, solid, min.	1.5 mm ²
Wire connection cross-section, finely stranded with wire-end ferrules DIN 46228/4, max.	4 mm ²	Wire connection cross section, finely stranded, max.	4 mm ²
Wire connection cross section, finely stranded, min.	1.5 mm ²	Conductor cross-section, max.	4 mm ²
Conductor cross-section, min.	1.5 mm ²	Basic material	Polycarbonate, glass fibre reinforced
BG	3		

Classifications

ETIM 8.0	EC000438	ETIM 9.0	EC000438
ETIM 10.0	EC000438	ECLASS 14.0	27-44-02-05
ECLASS 15.0	27-44-02-05		

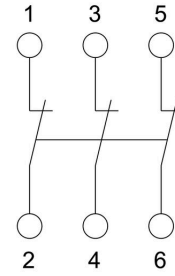
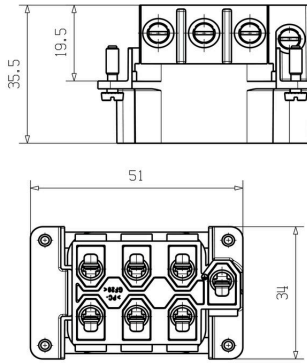
HDC AOC 6 MS

Weidmüller Interface GmbH & Co. KG
Klingenbergstraße 26
D-32758 Detmold
Germany

www.weidmueller.com

Drawings

Connection diagram



Three-phase Anti-open Circuit Diagram