

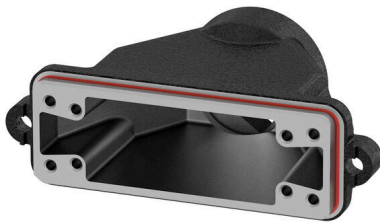
HDC IP68 HP 24B 1M50**Weidmüller Interface GmbH & Co. KG**

Klingenbergstraße 26

D-32758 Detmold

Germany

www.weidmueller.com

**IP68**

The RockStar® HighPower housings are manufactured from high-strength die-cast aluminium and offer perfect protection against harsh environmental conditions thanks to continual optimisation. The multi-part housing gives users the opportunity to examine work processes down to the last step in the workflow.

General ordering data

Version	HDC enclosures, Installation size: 8, Protection degree: IP68, IP69, in plugged condition, Cover, Clamping yoke connection, , Size of cable entries: M 50
Order No.	2451460000
Type	HDC IP68 HP 24B 1M50
GTIN (EAN)	4050118466379
Qty.	1 items

HDC IP68 HP 24B 1M50

Weidmüller Interface GmbH & Co. KG
 Klingenbergstraße 26
 D-32758 Detmold
 Germany

www.weidmueller.com

Technical data

Approvals

ROHS	Conform
------	---------

Dimensions and weights

Net weight	793 g
------------	-------

Temperatures

Limit temperature	-50 °C ... 120 °C
-------------------	-------------------

Environmental Product Compliance

RoHS Compliance Status	Compliant without exemption
------------------------	-----------------------------

REACH SVHC	No SVHC above 0.1 wt%
------------	-----------------------

Chemical resistance	Substance	Acetone
	Chemical resistance	Resistant
	Substance	Diesel oil
	Chemical resistance	Unstable
	Substance	Ethyl alcohol
	Chemical resistance	Resistant
	Substance	Transmission oil
	Chemical resistance	Conditionally resistant
	Substance	Hydraulic oil
	Chemical resistance	Conditionally resistant
	Substance	Petroleum benzene
	Chemical resistance	Unstable
	Substance	Sweat
	Chemical resistance	Conditionally resistant
	Substance	Premium gasoline
	Chemical resistance	Unstable
	Substance	Water
Chemical resistance	Resistant	
Substance	UV	
Chemical resistance	Resistant	
Substance	Ozone	
Chemical resistance	Resistant	

General data

Number of poles	0	Tightening torque	11 Nm
Design of housing	Cover	Installation size	8
UL 94 flammability rating	None	Colour	black, black (similar to RAL 9005)
Housing main material	diecast aluminium	Surface finish	Powder coating
Type	Cover	Series	HighPower
Free from halogens	false	EMC housings	Yes
BG	8	Material of locking element	Stainless steel, rust-proof
Protection degree	IP68, IP69, in plugged condition		

General data

UL 94 flammability rating	None	Surface finish	Powder coating
Protection degree	IP68, IP69, in plugged condition	Series	HighPower

HDC IP68 HP 24B 1M50

Weidmüller Interface GmbH & Co. KG
 Klingenbergstraße 26
 D-32758 Detmold
 Germany

www.weidmueller.com

Technical data

Version

Size of cable entries	M 50	Top part/bottom part/lid	Cover
Cover	with cover	Tightening torque	11 Nm
Number of cable entry on top	1	Number of cable entry sideways	1
Design of housing	Cover	Design of locking system	Clamping yoke connection
Installation size	8	Cable entry	w. thread
Type	Cover	Clamp version	Clamping yoke connection
Sealing	Silicone rubber	Internal thread	M 50
Colour (RAL)	RAL 9011, RAL 9005	BG	8

Important note

Product information	Depending on the intended operation, internally generated voltages can superimpose the working voltage and contain corresponding peaks. It is imperative to ensure that these peak voltages do not exceed the rated voltage. For applications outside of this specification, please contact us.
---------------------	---

Classifications

ETIM 8.0	EC000437	ETIM 9.0	EC000437
ETIM 10.0	EC000437	ECLASS 14.0	27-44-02-02
ECLASS 15.0	27-44-02-02		