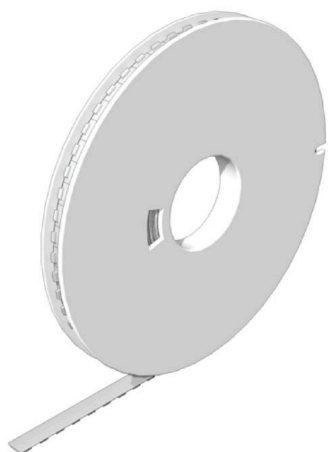


WS-A 8/8 MM WS**Weidmüller Interface GmbH & Co. KG**

Klingenbergstraße 26

D-32758 Detmold

Germany

www.weidmueller.com**WS/ DEK**

MultiMark terminal markers use an innovative composite material made from two components. The hard base contour of the marker snaps securely into the connector. The elastic surface finish makes the marker easy to mount. This specially punched material enables the strips to be stretched to accommodate the slight variations in spacing that tend to add up, especially with long terminal blocks. Another advantage: the excellent printability of the surface material guarantees durable and wear-resistant labelling. A print resolution of 300 dpi also produces a very legible script.

Your benefits with MultiMark

- Firm hold and durable printing
- Continuous strips save installation time
- Easy mounting thanks to an innovative composite material
- Large label field for optimal legibility
- High flexibility thanks to manufacturer independence

General ordering data

Version	WS, Terminal marker, 8 x 8.1 mm, Weidmueller, white
Order No.	2448930000
Type	WS-A 8/8 MM WS
GTIN (EAN)	4050118462982
Qty.	500 items

WS-A 8/8 MM WS

Weidmüller Interface GmbH & Co. KG
 Klingenbergstraße 26
 D-32758 Detmold
 Germany

www.weidmueller.com

Technical data

Approvals

ROHS	Conform
------	---------

Dimensions and weights

Height	8 mm	Height (inches)	0.315 inch
Width	8.1 mm	Width (inches)	0.3189 inch
Net weight	0.15 g		

Temperatures

Operating temperature range	-50...90 °C
-----------------------------	-------------

Environmental Product Compliance

RoHS Compliance Status	Compliant without exemption
REACH SVHC	No SVHC above 0.1 wt%

General data

Version	halogen-free	Width	8.1 mm
UL 94 flammability rating	V-2	Operating temperature range, max.	90 °C
Operating temperature range, min.	-50 °C	Colour	white
Halogen	No	Basic material	PC-ABS, TPU
Printed characters	neutral	compatible printer	THM MULTIMARK , THM MULTIMARK PLUS
Operating temperature range	-50...90 °C	Application/manufacturer	Weidmueller

Classifications

ETIM 8.0	EC000761	ETIM 9.0	EC000761
ETIM 10.0	EC000761	ECLASS 14.0	27-28-11-01
ECLASS 15.0	27-28-11-01		

Example of use

