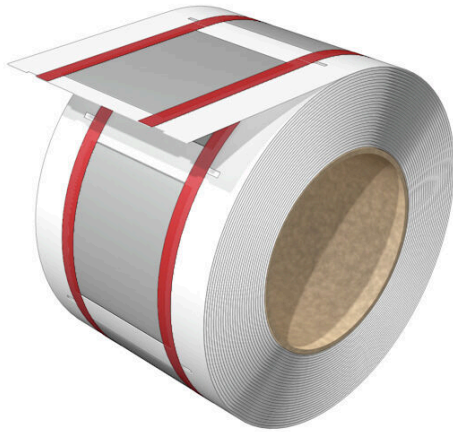


**HS 12.7-38.1/50 MM W**

**Weidmüller Interface GmbH & Co. KG**  
Klingenbergstraße 26  
D-32758 Detmold  
Germany

www.weidmueller.com



The heat-shrinkable sleeve is printable on 2 sides and can be used for marking and insulating cables and wires. The flexible, heat-shrink material enables a firm, perfect fit around the conductor and therefore saves space.

**General ordering data**

Version	Conductor and cable markers, 12.7 - 38.1 mm, 50.8 x 60.5 mm, white
Order No.	<a href="#">2437610000</a>
Type	HS 12.7-38.1/50 MM W
GTIN (EAN)	4050118460490
Qty.	100 items

## HS 12.7-38.1/50 MM W

**Weidmüller Interface GmbH & Co. KG**  
 Klingenbergstraße 26  
 D-32758 Detmold  
 Germany

www.weidmueller.com

## Technical data

### Approvals

ROHS	Conform
------	---------

### Dimensions and weights

Depth	0.77 mm	Depth (inches)	0.0303 inch
Height	50.8 mm	Height (inches)	2 inch
Width	60.5 mm	Width (inches)	2.3819 inch
Net weight	6.5 g		

### Temperatures

Operating temperature range	-55...135 °C
-----------------------------	--------------

### Environmental Product Compliance

RoHS Compliance Status	Compliant without exemption
REACH SVHC	No SVHC above 0.1 wt%

### General data

Type of printing	neutral	Width	60.5 mm
Operating temperature range, max.	135 °C	Operating temperature range, min.	-55 °C
Colour	white	Halogen	Yes
Basic material	Polyolefine	Printed characters	without
Recommended industries	Plant manufacture, Energy, Device manufacturer, Machinery	compatible printer	<a href="#">THM MULTIMARK</a> , <a href="#">THM MULTIMARK PLUS</a>
Operating temperature range	-55...135 °C	Number per roll	100

### Conductor and cable markers

Halogen	Yes	Conductor cross-section, max.	240 mm <sup>2</sup>
Conductor cross-section, min.	125 mm <sup>2</sup>	Conductor O.D., max.	38.1 mm
Conductor O.D., min.	12.7 mm	Rate of shrinkage	3:1
Recommended shrinking temperature	90 °C	Conductor O.D.	12.7 - 38.1 mm
Cross-section for connected wire	125 - 240 mm <sup>2</sup>		

### Classifications

ETIM 8.0	EC001530	ETIM 9.0	EC001530
ETIM 10.0	EC001530	ECLASS 14.0	27-28-11-02
ECLASS 15.0	27-28-11-02		

**HS 12.7-38.1/50 MM W**

**Weidmüller Interface GmbH & Co. KG**  
Klingenbergstraße 26  
D-32758 Detmold  
Germany

[www.weidmueller.com](http://www.weidmueller.com)

**Drawings**

