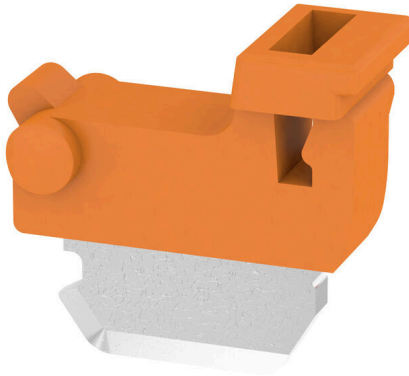


TNHE ZDL2.5 OR VPE 100

Weidmüller Interface GmbH & Co. KG
Klingenbergstraße 26
D-32758 Detmold
Germany

www.weidmueller.com



In contrast to the terminal blocks with integrated disconnect lever, our disconnect plugs can be completely detached or removed from the terminal block and the respective application and offer a flexible alternative solution to our standard disconnectors.

General ordering data

Version	Disconnecting lever (terminal)
Order No.	2432480000
Type	TNHE ZDL2.5 OR VPE 100
GTIN (EAN)	4050118443318
Qty.	100 items

TNHE ZDL2.5 OR VPE 100

Weidmüller Interface GmbH & Co. KG
 Klingenbergstraße 26
 D-32758 Detmold
 Germany

www.weidmueller.com

Technical data

Approvals

ROHS	Conform
------	---------

Dimensions and weights

Net weight	0.45 g
------------	--------

Temperatures

Storage temperature	-25 °C...55 °C	Ambient temperature	-5 °C...40 °C
---------------------	----------------	---------------------	---------------

Environmental Product Compliance

RoHS Compliance Status	Compliant without exemption
REACH SVHC	No SVHC above 0.1 wt%

Classifications

ETIM 8.0	EC002848	ETIM 9.0	EC002848
ETIM 10.0	EC002848	ECLASS 14.0	27-25-03-90
ECLASS 15.0	27-25-03-90		