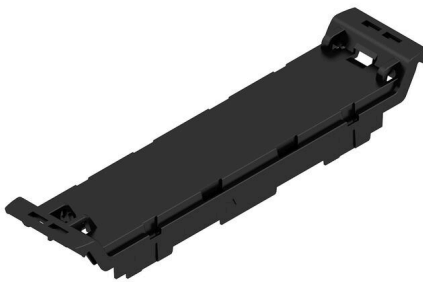


## CH20M22 F BK 2010

**Weidmüller Interface GmbH & Co. KG**  
 Klingenbergstraße 26  
 D-32758 Detmold  
 Germany

[www.weidmueller.com](http://www.weidmueller.com)

### Product image



The front element of the CH20M housing offers you numerous options for individual design and functionality. You can choose between various printing methods such as pad printing and laser engraving to implement your designs precisely and attractively.

Laser cut-outs for electronic components are also possible. Markers can also be used. The front element can be equipped with or without a hinged lid.

### General ordering data

|            |   |
|------------|---|
| Version    | Front element, OMNIMATE Housing - series CH20M black, Front element, including preparation for flip cover, Width: 22.5 mm |
| Order No.  | <a href="#">2418640000</a>  |
| Type       | CH20M22 F BK 2010   |
| GTIN (EAN) | 4032248899135   |
| Qty.       | 50 items  |

## CH20M22 F BK 2010

Weidmüller Interface GmbH & Co. KG  
Klingenbergstraße 26  
D-32758 Detmold  
Germany

www.weidmueller.com

## Technical data

## Approvals

|      |         |
|------|---------|
| ROHS | Conform |
|------|---------|

## Dimensions and weights

|            |         |                 |             |
|------------|---------|-----------------|-------------|
| Depth      | 15.5 mm | Depth (inches)  | 0.6102 inch |
| Height     | 100 mm  | Height (inches) | 3.937 inch  |
| Width      | 22.5 mm | Width (inches)  | 0.8858 inch |
| Net weight | 5.94 g  |                 |             |

## Temperatures

|                     |   |                             |              |
|---------------------|---|-----------------------------|--------------|
| Ambient temperature | -25 °C...85 °C                                    | Operating temperature range | -40...120 °C |
| Humidity            | 5 - 93% rel. humidity, Tu = 40°C, no condensation |                             |              |

## Environmental Product Compliance

|                        |                             |
|------------------------|-----------------------------|
| RoHS Compliance Status | Compliant without exemption |
| REACH SVHC             | No SVHC above 0.1 wt%       |

## Material data

|                           |         |                                  |             |
|---------------------------|---------|----------------------------------|-------------|
| UL 94 flammability rating | V-0     | Insulating material              | PA 66 GF 30 |
| Insulating material group | I       | Surface finish                   | untreated   |
| Basic material            | Plastic | Comparative Tracking Index (CTI) | 600 ≤ CTI   |

## General data

|                        |          |   |                                      |
|------------------------|----------|---|--------------------------------------|
| Colour                 | black    | Protection degree   | IP20 in installed state              |
| Colour chart (similar) | RAL 9011 | Information regarding whole assembly, see referenced articles | <a href="#">CH20M22 B BK/OR 2010</a> |
| Encapsulation option   | No       |   |                                      |

## Component properties

|                      |     |                      |    |
|----------------------|-----|----------------------|----|
| Flip cover mountable | Yes | Marker integrateable | No |
|----------------------|-----|----------------------|----|

## Individualization options

|                                    |                               |                                      |                 |
|------------------------------------|-------------------------------|--------------------------------------|-----------------|
| Customer specific cutouts possible | Yes                           | Customer specific labelling possible | Yes             |
| Customer specific order process    | See guideline under downloads | Alternative colours                  | More on request |
| Processing possibilities           | Laser processing, Milling     |                                      |                 |

## Classifications

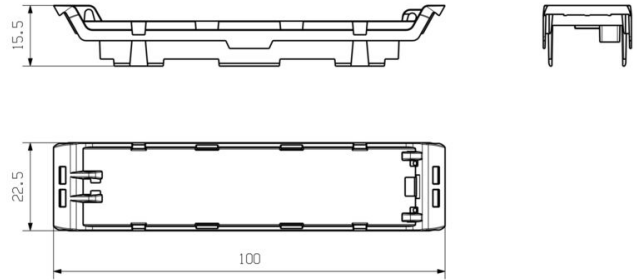
|             |             |             |             |
|-------------|-------------|-------------|-------------|
| ETIM 8.0    | EC001031    | ETIM 9.0    | EC001031    |
| ETIM 10.0   | EC001031    | ECLASS 14.0 | 27-19-06-03 |
| ECLASS 15.0 | 27-19-06-03 |             |             |

**Drawings**

**Product image**



**Dimensioned drawing**



**CH20M22 F BK 2010**

**Weidmüller Interface GmbH & Co. KG**  
 Klingenbergstraße 26  
 D-32758 Detmold  
 Germany

www.weidmueller.com

**Counterpart**

**CH20M22 C - Flip cover**



The Flip cover of the CH20M housing offers practical functions that support your application. It can be sealed, which ensures additional security and protection for your contents. You also have the option of printing on the cover using pad printing to clearly display important information or logos.

In addition, markers can be used to apply specific instructions or markings directly on the cover.

**General ordering data**

|            |                            |         |   |
|------------|----------------------------|---------|---|
| Type       | CH20M22 C BK 1819          | Version |   |
| Order No.  | <a href="#">2418670000</a> |         | Modular housing, OMNIMATE Housing - series CH20M black,       |
| GTIN (EAN) | 4032248899111              |         | Transparent, Flip cover, Width: 22.5 mm                       |
| Qty.       | 50 ST                      |         |   |
| Type       | CH20M22 C TP 8089          | Version |   |
| Order No.  | <a href="#">1073420000</a> |         | Modular housing, OMNIMATE Housing - series CH20M Transparent, |
| GTIN (EAN) | 4032248831470              |         | Flip cover, Width: 22.5 mm                                    |
| Qty.       | 50 ST                      |         |   |