

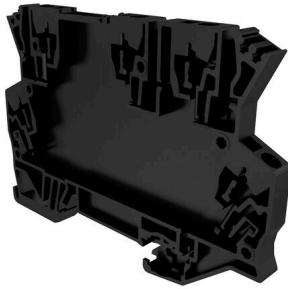
**GH MCZUE1.5/UE SW 1683****Weidmüller Interface GmbH & Co. KG**

Klingenbergstraße 26

D-32758 Detmold

Germany

www.weidmueller.com



Open miniature housing in modular terminal format with five tension clamp connections. A transparent hinged top plate can be used for labelling and provides access to potentiometer and status displays. Plug-in cross-connectors can be used to interconnect the three top connections. A cover plate for closing off the housing is also available.

**General ordering data**

Version	Mounting rail housing, OMNIMATE Housing - TERMINALBOX black, Housing base part, Width: 6 mm
Order No.	<a href="#">2409990000</a>
Type	GH MCZUE1.5/UE SW 1683
GTIN (EAN)	4032248841172
Qty.	100 items

## GH MCZUE1.5/UE SW 1683

**Weidmüller Interface GmbH & Co. KG**  
 Klingenbergstraße 26  
 D-32758 Detmold  
 Germany

www.weidmueller.com

## Technical data

### Approvals

ROHS	Conform
------	---------

### Dimensions and weights

Height	63 mm	Height (inches)	2.4803 inch
Width	6 mm	Width (inches)	0.2362 inch
Length	91 mm	Length (inches)	3.5827 inch
Net weight	13 g		

### Environmental Product Compliance

RoHS Compliance Status	Compliant without exemption
REACH SVHC	No SVHC above 0.1 wt%

### Material data

Insulating material group	I	Comparative Tracking Index (CTI)	600 ≤ CTI
---------------------------	---	----------------------------------	-----------

### General data

Colour	black	Protection degree	IP20
Mounting rail	TS 32, TS 35	Colour chart (similar)	RAL 9011
Encapsulation option	Yes		

### Design - IN requirements

Tolerance for the PCB shape	±0.1 mm	PCB thickness	1 mm
Tolerance of circuit board thickness	±0.1 mm		

### Individualization options

Customer specific cutouts possible	No	Customer specific labelling possible	Yes
Alternative colours	More on request		

### Assembly properties

Number of connection levels	2	Number of PCBs, max.	1
Cross-connection	Yes	Type of connection	without, Connection element

### Housing properties

Flip cover mountable	Yes	Marker integrateable	Yes
Cut out in clip-on foot area as preparation for	PE-contact, Contact included!	Cross-connection	Yes
Number of connection levels	2		

**GH MCZUE1.5/UE SW 1683**

**Weidmüller Interface GmbH & Co. KG**  
Klingenbergstraße 26  
D-32758 Detmold  
Germany

**Drawings**

[www.weidmueller.com](http://www.weidmueller.com)

