

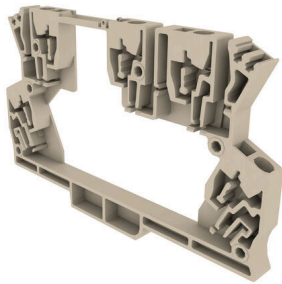
RA MCZ1.5 DKBG 1674**Weidmüller Interface GmbH & Co. KG**

Klingenbergstraße 26

D-32758 Detmold

Germany

www.weidmueller.com



Open miniature housing in modular terminal format with five tension clamp connections. A transparent hinged top plate can be used for labelling and provides access to potentiometer and status displays. Plug-in cross-connectors can be used to interconnect the three top connections. A cover plate for closing off the housing is also available.

General ordering data

Version	Extension frame, OMNIMATE Housing - TERMINALBOX grey-beige, Extension frame, Width: 8.5 mm
Order No.	2224240000
Type	RA MCZ1.5 DKBG 1674
GTIN (EAN)	4032248126262
Qty.	25 items

RA MCZ1.5 DKBG 1674

Weidmüller Interface GmbH & Co. KG
 Klingenbergstraße 26
 D-32758 Detmold
 Germany

www.weidmueller.com

Technical data

Approvals

ROHS	Conform
------	---------

Dimensions and weights

Depth	55.9 mm	Depth (inches)	2.2008 inch
Height	91 mm	Height (inches)	3.5827 inch
Width	8.5 mm	Width (inches)	0.3346 inch
Net weight	8.61 g		

Temperatures

Storage temperature	-25 °C...55 °C	Humidity at storage temperature	80 % relative humidity (without condensation)
Operating temperature	-50 °C...120 °C	Installation temperature	-25 °C...120 °C

Environmental Product Compliance

RoHS Compliance Status	Compliant without exemption
REACH SVHC	No SVHC above 0.1 wt%

Material data

UL 94 flammability rating	V-0	Insulating material	PA 66
Insulating material group	I	Surface finish	untreated
Basic material	Plastic	Comparative Tracking Index (CTI)	600 ≤ CTI

General data

Colour	grey-beige	Protection degree	IP20 in installed state
Colour chart (similar)		Encapsulation option	Yes

Design - IN requirements

Tolerance for the PCB shape	±0.1	PCB thickness	1 mm
Tolerance of circuit board thickness	±0.1 mm		

Individualization options

Customer specific cutouts possible	No	Customer specific labelling possible	No
Alternative colours	More on request		

Assembly properties

Number of connection levels	2	Number of PCBs, max.	1
Continuous current of cross-connection	10 A	Continuous current of cross-connection/ 32 A PCB	
Cross-connection	Yes	Type of connection	Tension-clamp connection

Housing properties

Flip cover mountable	Yes	Marker integrateable	Yes
Continuous current of cross-connection	10 A	Cross-connection	Yes
Number of connection levels	2		

Technical data

Classifications

ETIM 8.0	EC001031	ETIM 9.0	EC001031
ETIM 10.0	EC001031	ECLASS 14.0	27-19-06-04
ECLASS 15.0	27-19-06-04		

RA MCZ1.5 DKBG 1674

Weidmüller Interface GmbH & Co. KG
Klingenbergstraße 26
D-32758 Detmold
Germany

Drawings

www.weidmueller.com

Mounting with
8857560000 MCZ 5

