

IE-C6EL8UG0002U40XSH-E

Weidmüller Interface GmbH & Co. KG
Klingenbergstraße 26
D-32758 Detmold
Germany

www.weidmueller.com



Assembled IE cables for EtherNet/IP applications with plug-in connector, type M12 X, cat. 6A, according to IEC 61076-2-109 and RJ45 plug-in connector for 10 GBit/s applications

General ordering data

| | |
|------------|---|
| Version | System cable, RJ45 IP 20, M12 X-type, flange, socket, back panel mounting, Cat.6A / Class EA (ISO/IEC 11801 2010), PUR, 0.2 m |
| Order No. | 2124020002 |
| Type | IE-C6EL8UG0002U40XSH-E |
| GTIN (EAN) | 4050118705133 |
| Qty. | 1 items |

IE-C6EL8UG0002U40XSH-E

Weidmüller Interface GmbH & Co. KG
 Klingenbergstraße 26
 D-32758 Detmold
 Germany

www.weidmueller.com

Technical data

Approvals

| | |
|------|---------|
| ROHS | Conform |
|------|---------|

Dimensions and weights

| | | | |
|------------|-------|-----------------|------------|
| Length | 0.2 m | Length (inches) | 7.874 inch |
| Net weight | 25 g | | |

Temperatures

| | | | |
|--------------------------|----------------|-----------------------|----------------|
| Storage temperature | -40 °C...80 °C | Operating temperature | -40 °C...80 °C |
| Installation temperature | -20 °C...60 °C | | |

Environmental Product Compliance

| | |
|--------------------------------------|--------------------------------------|
| RoHS Compliance Status | Compliant with exemption |
| RoHS Exemption (if applicable/known) | 6c |
| REACH SVHC | Lead 7439-92-1 |
| SCIP | 67cf1078-beca-4687-860b-dc475a6ec24a |

Cable specific standards

| | | | |
|--------------------|----------------|---------------------|------------------------|
| Standard, assembly | UL Style 20963 | Impervious to smoke | According to IEC 61034 |
|--------------------|----------------|---------------------|------------------------|

Standards

| | | | |
|--------------------|----------------|---------------------|------------------------|
| Standard, assembly | UL Style 20963 | Impervious to smoke | According to IEC 61034 |
|--------------------|----------------|---------------------|------------------------|

Cable structure

| | | | |
|---------------------------|--|---------------------------------------|--|
| Strands | 7 | Sheathing colour | green (RAL 6018) |
| Standard designations | S/FTP, LIO2YSC11Y 4x2x0.15 PIMF FRNC GN | Cross-section | 4*2*AWG 26/7 - 4*2*0.128 mm ² |
| Shielding | S/FTP | Number of wires | 8 |
| Insulation cross-section | 0.98 mm | Insulation | PE |
| Sheath diameter, max. | 6.7 mm | Sheath diameter, min. | 6.1 mm |
| Material sheath | PUR | Wiring | EIA/TIA T568 B |
| Copper diameter | 0.48 µm | Wire pair shielding | Aluminium foil |
| Arrangement of wire cores | Twisted pair | Complete shielding | Shielding braid made from copper wiring |
| Wire material | Stranded tin-plated copper wire | Colour sequence or wires - wire pairs | white - blue, white - orange, white - green, white - brown |
| Shielding braid thickness | 0.1 mm | | |

Electrical properties of cable

| | | | |
|-------------------------|--|--------------------------------|------------------------|
| Category | Cat.6A / Class EA (ISO/ IEC 11801 2010) | Loop resistance | 290 Ω/km |
| Signal propagation time | 5.2 ns/m | Test voltage: wire-wire-shield | 700 Vrms, 50 Hz, 1 min |
| Transfer impedance | 15 mΩ/m at 1 MHz, 10 mΩ/m at 10 MHz, 30 mΩ/m at 30 MHz | Characteristic impedance | 100 ± 5 Ω at 100MHz |

IE-C6EL8UG0002U40XSH-E

Weidmüller Interface GmbH & Co. KG
 Klingenbergstraße 26
 D-32758 Detmold
 Germany

www.weidmueller.com

Technical data

Mechanical and material properties of cable

| | | | |
|---------------------------------|----------------------------------|--------------------------------|--|
| Resistance to oils | in accordance with IEC 60811-2-1 | Halogen | halogen-free, according to IEC 60754-1 |
| Min. bending radius, repetitive | 10 x cable diameter | Min. bending radius, once only | 5 x cable diameter |
| Abrasion resistance | very good | Resistance to spread of flame | in accordance with IEC 60332-1-2 |
| Impervious to smoke | According to IEC 61034 | | |

Plug, left

| | |
|-----------|---|
| Plug left | RJ45, IP20, male contact, straight, plug, Plastic, shielded |
|-----------|---|

Plug, right

| | |
|------------|---|
| Plug right | M12, X-coded, IP67, female contact, straight, plug, Plastic, shielded |
|------------|---|

Classifications

| | | | |
|-------------|-------------|-------------|-------------|
| ETIM 8.0 | EC002599 | ETIM 9.0 | EC002599 |
| ETIM 10.0 | EC002599 | ECLASS 14.0 | 27-06-03-08 |
| ECLASS 15.0 | 27-06-03-08 | | |

IE-C6EL8UG0002U40XSH-E

Weidmüller Interface GmbH & Co. KG
 Klingenbergstraße 26
 D-32758 Detmold
 Germany

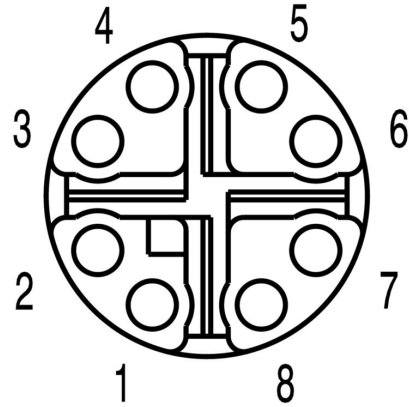
www.weidmueller.com

Drawings

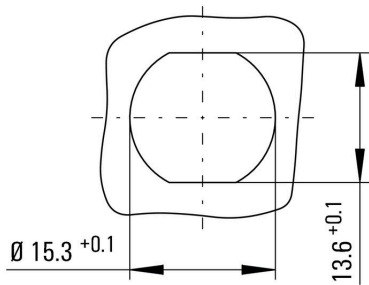
Wiring

| | | | | |
|------|---|---------------|---|-----|
| RJ45 | 1 | White, Orange | 1 | M12 |
| | 2 | Orange | 2 | |
| | 3 | White, Green | 3 | |
| | 4 | Blue | 8 | |
| | 5 | White, Blue | 7 | |
| | 6 | Green | 4 | |
| | 7 | White, Brown | 5 | |
| | 8 | Brown | 6 | |

Pinning



Detailed drawing



IE-C6EL8UG0002U40XSH-E

Weidmüller Interface GmbH & Co. KG

Klingenbergstraße 26

D-32758 Detmold

Germany

www.weidmueller.com

Accessories

Blank



TM-I is an acknowledged and accredited marker type for traffic engineering applications. There are various different tag lengths available for individual labelling with long character strings. Easy handling of separation and installation thanks to the project marker field. Pre-attachment of sleeves and retrofitting of tags offer excellent versatility

The special contour of TM-I allows easy assembly and secures firm positioning. They are compatible with a number of commercially available sleeves. Thanks to the MultiCard format, the tags can be printed quickly and conveniently with the PrintJet CONNECT, plotter or the STI pen.

- Easy handling of separation and installation thanks to the project marker field.
- Acknowledged and accredited marker for traffic engineering applications
- Pre-attachment of sleeves and retrofitting of tags offer excellent versatility
- Not suited for labelling with P-Ink or STI pen in connection with CLI T sleeves

For custom printing: Please send us a file of our labeling software M-Print PRO or M-Print PRO Online (without installation) for your labeling specifications.

General ordering data

| | | |
|------------|----------------------------|---|
| Type | TM-I 12 MC NE WS | Version |
| Order No. | 1718411044 | TM-I, Insert markers, 12 x 4 mm, white |
| GTIN (EAN) | 4008190348977 | |
| Qty. | 320 ST | |
| Type | TM-I 18 MC NE WS | Version |
| Order No. | 1718431044 | TM-I, Insert markers, 1.5 - 22 mm, 18 x 4 mm, white |
| GTIN (EAN) | 4008190349011 | |
| Qty. | 320 ST | |