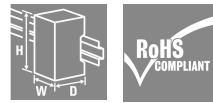
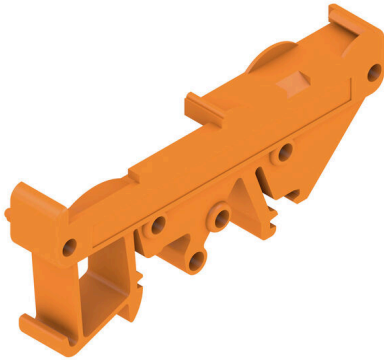


**RF RS 70 RE/A3/M.BEZ 1665****Weidmüller Interface GmbH & Co. KG**Klingenbergstraße 26  
D-32758 Detmold  
Germany

www.weidmueller.com



The RS 70 profile is a pluggable, modular system for the mounting rail that can be flexibly extended to the required length. It consists of intermediate sections in various lengths. Optionally with or without snap-in foot, as well as end plates with integrated marking option. The PCB is inserted from the side, while the permanently integrated latching feet enable stable fastening.

**General ordering data**

Version	Clip-in foot, RS 70 orange, End plate DIN mounting rail right, Width: 13.7 mm
Order No.	<a href="#">2062690000</a>
Type	RF RS 70 RE/A3/M.BEZ 1665
GTIN (EAN)	4008190241100
Qty.	20 items

**Technical data**

**Approvals**

ROHS	Conform
------	---------

**Dimensions and weights**

Depth	29.2 mm	Depth (inches)	1.1496 inch
Height	70 mm	Height (inches)	2.7559 inch
Width	13.7 mm	Width (inches)	0.5394 inch
Net weight	6.11 g		

**Environmental Product Compliance**

RoHS Compliance Status	Compliant without exemption
REACH SVHC	No SVHC above 0.1 wt%

**Material data**

UL 94 flammability rating	V-2	Insulating material	PA 66
Surface finish	untreated	Basic material	PA 66
Comparative Tracking Index (CTI)	600 ≤ CTI		

**General data**

Colour	orange	Protection degree	IP00
Colour chart (similar)	RAL 2000	Encapsulation option	No

**Classifications**

ETIM 8.0	EC002779	ETIM 9.0	EC002779
ETIM 10.0	EC002779	ECLASS 14.0	27-19-06-02
ECLASS 15.0	27-19-06-02		

