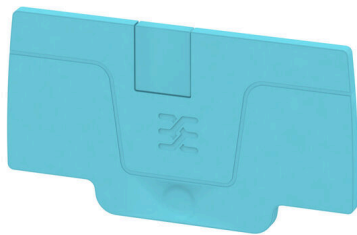


**AEP 2C 4 BL****Weidmüller Interface GmbH & Co. KG**Klingenbergstraße 26  
D-32758 Detmold  
Germany

www.weidmueller.com

**Product image**

Partition plates and end plates are essential accessories for terminal blocks. Partition plates provide optical and electrical separation of different potentials and functional groups, increasing safety and ensuring a clear structure inside the control cabinet. End plates close the terminal block row on the sides, protect against contact with live parts, and ensure a clean, stable finish. Both components are precisely matched to the respective Weidmüller terminal block series, contributing to safe, compliant, and professional wiring.

**General ordering data**

Version	A-series, End plate
Order No.	<a href="#">2051690000</a>
Type	AEP 2C 4 BL
GTIN (EAN)	4050118411911
Qty.	50 items

**AEP 2C 4 BL**

**Weidmüller Interface GmbH & Co. KG**  
 Klingenbergstraße 26  
 D-32758 Detmold  
 Germany

www.weidmueller.com

**Technical data**

**Approvals**

ROHS	Conform
------	---------

**Dimensions and weights**

Depth	32.35 mm	Depth (inches)	1.2736 inch
Height	58 mm	Height (inches)	2.2835 inch
Width	2.1 mm	Width (inches)	0.0827 inch
Net weight	2.1 g		

**Temperatures**

Storage temperature	-25 °C...55 °C	Ambient temperature	-5 °C...40 °C
Continuous operating temp., min.	-60 °C	Continuous operating temp., max.	130 °C

**Environmental Product Compliance**

RoHS Compliance Status	Compliant without exemption		
REACH SVHC	No SVHC above 0.1 wt%		
Product Carbon Footprint	Cradle to gate	0.018 kg CO2eq.	

**Material data**

Basic material	Wemid	Colour	blue
UL 94 flammability rating	V-0		

**System specifications**

Version	End plate
---------	-----------

**Additional technical data**

With snap-in pegs	Yes	Snap-on	Yes
-------------------	-----	---------	-----

**Classifications**

ETIM 8.0	EC000886	ETIM 9.0	EC000886
ETIM 10.0	EC000886	ECLASS 14.0	27-25-03-01
ECLASS 15.0	27-25-03-01		