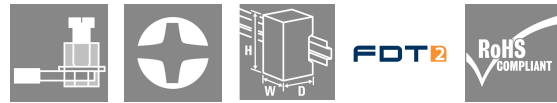


ACT20C-CML-10-AO-RC-S

Weidmüller Interface GmbH & Co. KG
 Klingenbergstraße 26
 D-32758 Detmold
 Germany

www.weidmueller.com



The ACT20C series was especially developed for applications with continuous processes. It enables the continuous monitoring of diagnostic, device and process information ("condition monitoring").

Several ACT20C components form a station which consists of an ACT20C Ethernet gateway, communicative ACT20C signal converters and an ACT20C bus termination terminal.

General ordering data

Version	Current-measuring transducer, Input : 0...5/10 A, Output : 0(4)-20 mA, 0-10 V, Relay
Order No.	2044840000
Type	ACT20C-CML-10-AO-RC-S
GTIN (EAN)	4050118409826
Qty.	1 items

ACT20C-CML-10-AO-RC-S

Weidmüller Interface GmbH & Co. KG
 Klingenbergstraße 26
 D-32758 Detmold
 Germany

www.weidmueller.com

Technical data

Approvals

Approvals



ROHS	Conform
UL File Number Search	UL Website
Certificate no. (cULus)	E141197

Dimensions and weights

Depth	113.6 mm	Depth (inches)	4.4724 inch
Height	117.2 mm	Height (inches)	4.6142 inch
Width	17.5 mm	Width (inches)	0.689 inch
Net weight	134 g		

Temperatures

Storage temperature	-40 °C...85 °C	Operating temperature	
Humidity	5...95 %, no condensation		

Probability of failure

SIL in compliance with IEC 61508	None	MTTF	130 a
----------------------------------	------	------	-------

Environmental Product Compliance

RoHS Compliance Status	Compliant with exemption
RoHS Exemption (if applicable/known)	7a, 7cl
REACH SVHC	Lead 7439-92-1
SCIP	2f6dd957-421a-46db-a0c2-cf1609156924

Input

Input frequency	AC: 15...400 Hz (true root mean square), AC: 50 Hz (arithmetic average)	Input measurement range	configurable, 0...1/5/10 A AC (RMS) or DC
Input signal	Power cable can be connected to the terminals		

Output

Load impedance current	≤ 600 Ω
------------------------	---------

Output (digital)

Rated switching current	2 A	Max. switching voltage, AC	250 V
Max. switching voltage, DC	24 V	Type	Relay, 1 CO contact, Process alarms (4x) with hysteresis, with alarm delay (configurable) 0...180 s

ACT20C-CML-10-AO-RC-S

Weidmüller Interface GmbH & Co. KG

 Klingenbergstraße 26
 D-32758 Detmold
 Germany

www.weidmueller.com

Technical data

Output (analogue)

Type (analogue output)	Voltage and current output (configurable)	Output voltage	Adjustable, 0...10 V, 2...10 V, 0...5 V, 1...5 V, -5...+5 V, -10...+10 V
Load resistance voltage	$\geq 10 \text{ k}\Omega$	Load resistance current	$\leq 600 \Omega$
Output current	Adjustable, 0...20 mA, 4...20 mA, -20...+20 mA		

alarm output

Switching current	5 A		
-------------------	-----	--	--

General data

Accuracy	$\leq \pm 0.3 \% @ 1 \text{ A} / 5 \text{ A}, \leq \pm 0.6 \% @ 10 \text{ A}$	Protection degree	IP20
Supply voltage	24 V DC $\pm 30 \%$	Step response time	$\leq 300 \text{ ms (RMS)}, \leq 60 \text{ ms (AA)}$
Mounting rail	TS 35	Temperature coefficient	$\leq \pm 100 \text{ ppm/K @ } -25...+55 \text{ }^\circ\text{C}, \leq \pm 200 \text{ ppm/K @ } +55...+70 \text{ }^\circ\text{C}$
Nominal power consumption	3 VA	Configuration	for thresholds (overcurrent / undercurrent), delay and hysteresis, via gateway (ACT20C-GTW-100-MTCP-S), With FDT/DTM software, DIP switch and potentiometer
Power consumption, max.	2.2 W		

Insulation coordination

Impulse withstand voltage	6 kV (1.2/50 μs)	EMC standards	IEC 61326-1
Test voltage	4 kV	Surge voltage category	III
Pollution severity	2	Galvanic isolation	4-way isolator, between input / output / supply / relay
Rated voltage	300 V ACrms		

Connection data

Type of connection	Screw connection	Tightening torque, min.	0.5 Nm
Tightening torque, max.	3.5 Nm	Clamping range, rated connection	1.5 mm ²
Clamping range, min.	0.5 mm ²	Clamping range, max.	2.5 mm ²
Wire connection cross section AWG, min.	AWG 30	Wire connection cross section AWG, max.	AWG 14
Wire cross-section, solid, min.	0.5 mm ²	Wire cross-section, solid, max.	2.5 mm ²

Part description

Product description	<p>The device ACT20C-CML-10-AO-RC-S measures and monitors AC and DC currents of up to 10 A. The real effective value method used allows for precise measurement, even for distorted current curve shapes. The device features an integrated limit value monitoring function with an adjustable switching threshold, lag and hysteresis, as well as a relay output.</p> <p>Features</p> <ul style="list-style-type: none"> • Real effective value measurement (True RMS) or arithmetic averaging (AA) measurement • Limit value monitoring for overcurrent or undercurrent • Relay output by means of the open-circuit / closed-circuit principle • Infinitely variable trigger delay
---------------------	--

ACT20C-CML-10-AO-RC-S

Weidmüller Interface GmbH & Co. KG
Klingenbergstraße 26
D-32758 Detmold
Germany

www.weidmueller.com

Technical data

- Operational status and error display on a front panel LED and output signalling according to NE43, NE44, NE107
- Galvanic four-way insulation for secure isolation according to IEC/EN 61010-2-201

Classifications

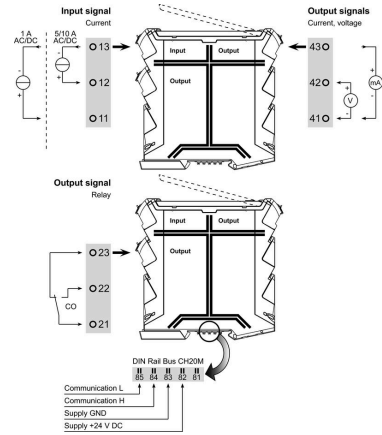
ETIM 8.0	EC002475	ETIM 9.0	EC002475
ETIM 10.0	EC002475	ECLASS 14.0	27-21-01-23
ECLASS 15.0	27-21-01-23		

ACT20C-CML-10-AO-RC-S

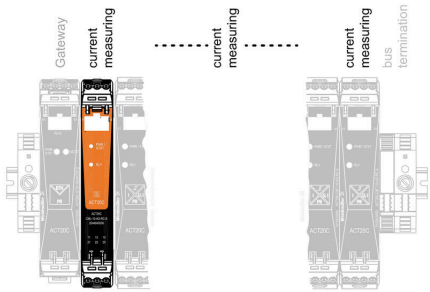
Weidmüller Interface GmbH & Co. KG
 Klingenbergstraße 26
 D-32758 Detmold
 Germany

Drawings

www.weidmueller.com



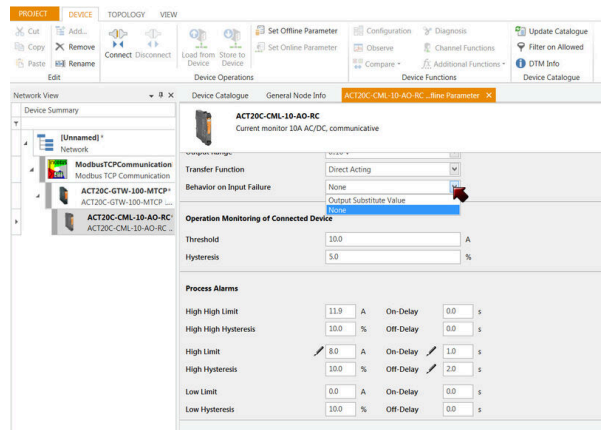
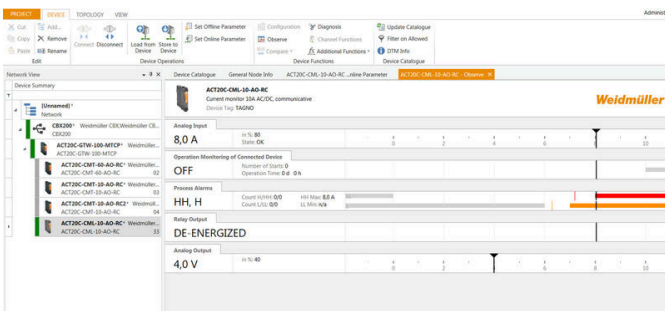
ACT20C-CML-10-AO-RC-S is part of the ACT20C- Station



Configuration

User address	DIP switch S1					
	1	2	3	4	5	6
2		■				
3	■					
4			■			
5		■	■			
6				■		
7	■	■	■			
8					■	
...						
16						■
...						
32						■
33	■					

■ = ON



ACT20C-CML-10-AO-RC-S

Weidmüller Interface GmbH & Co. KG
Klingenbergstraße 26
D-32758 Detmold
Germany

Drawings

www.weidmueller.com

