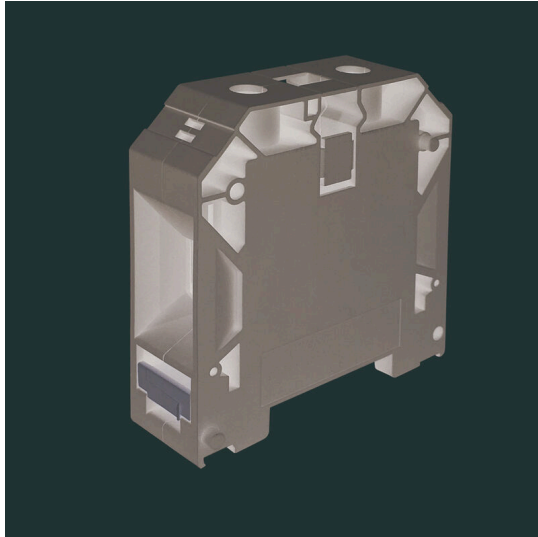


## SAKDU 70

**Weidmüller Interface GmbH & Co. KG**  
Klingenbergstraße 26  
D-32758 Detmold  
Germany

[www.weidmueller.com](http://www.weidmueller.com)



### General ordering data

Version	Feed-through terminal, Screw connection, 70 mm <sup>2</sup> , 1000 V, 192 A, grey
Order No.	<a href="#">2040970000</a>
Type	SAKDU 70
GTIN (EAN)	4050118451306
Qty.	10 items

## SAKDU 70

Weidmüller Interface GmbH &amp; Co. KG

Klingenbergstraße 26

D-32758 Detmold

Germany

www.weidmueller.com

## Technical data

## Approvals

Approvals



ROHS Conform

UL File Number Search [UL Website](#)

Certificate No. (cURus) E60693

## Dimensions and weights

Depth	74.5 mm	Depth (inches)	2.9331 inch
Depth including DIN rail	74.5 mm	Height	71 mm
Height (inches)	2.7953 inch	Width	20.5 mm
Width (inches)	0.8071 inch	Net weight	108.19 g

## Temperatures

Storage temperature	-25 °C...55 °C	Ambient temperature	-50 °C...75 °C
Continuous operating temp., min.	-50 °C	Continuous operating temp., max.	120 °C

## Environmental Product Compliance

RoHS Compliance Status	Compliant without exemption
REACH SVHC	No SVHC above 0.1 wt%

## Material data

Basic material	PA 66/6	Colour	grey
UL 94 flammability rating	V-0		

## System specifications

End cover plate required	Yes	Number of potentials	1
Number of levels	1	Number of clamping points per level	2
Levels cross-connected internally	No	Mounting rail	TS 35

## Additional technical data

Explosion-tested version	No	Type of mounting	Snap-on
--------------------------	----	------------------	---------

## Conductors for clamping (additional connection)

Connection type, additional connection Screw connection

## Conductors for clamping (rated connection)

Gauge to IEC 60947-1	B11	Wire connection cross section AWG, max.	AWG 2/0
Connection direction	on side	Tightening torque, max.	10 Nm
Tightening torque, min.	6 Nm	Stripping length	22 mm
Type of connection	Screw connection	Number of connections	2
Clamping range, max.	70 mm <sup>2</sup>	Clamping range, min.	16 mm <sup>2</sup>
Clamping screw	M 8	Wire connection cross section AWG, min.	AWG 6

## SAKDU 70

**Weidmüller Interface GmbH & Co. KG**

Klingenbergstraße 26  
D-32758 Detmold  
Germany

www.weidmueller.com

## Technical data

Wire connection cross-section, finely stranded with wire-end ferrules DIN 46228/4, max.	70 mm <sup>2</sup>	Wire connection cross-section, finely stranded with wire-end ferrules DIN 46228/4, min.	16 mm <sup>2</sup>
Wire connection cross-section, finely stranded with wire-end ferrules DIN 46228/1, max.	70 mm <sup>2</sup>	Wire connection cross-section, finely stranded with wire-end ferrules DIN 46228/1, min.	16 mm <sup>2</sup>
Wire connection cross section, finely stranded, max.	70 mm <sup>2</sup>	Wire connection cross section, finely stranded, min.	16 mm <sup>2</sup>
Connection cross-section, stranded, max.	70 mm <sup>2</sup>	Connection cross-section, stranded, min.	16 mm <sup>2</sup>
Wire connection cross-section, solid core, max.	16 mm <sup>2</sup>	Wire connection cross-section, solid core, min.	16 mm <sup>2</sup>
Connection cross-section, finely stranded, min.	16 mm <sup>2</sup>		

### General

Wire connection cross section AWG, max.	AWG 2/0	Wire connection cross section AWG, min.	AWG 6
Mounting rail	TS 35		

### Rating data

Rated cross-section	70 mm <sup>2</sup>	Rated voltage	1000 V
Rated DC voltage	1000 V	Nominal current	192 A
Current at maximum wires	192 A	Volume resistance according to IEC 60947-7-x	0.26 mΩ
Rated impulse withstand voltage	8 kV	Power loss in accordance with IEC 60947-7-x	6.14 W
Surge voltage category	III	Pollution severity	3

### UL rating data

Conductor size Factory wiring max. (cURus)	00 AWG	Voltage size B (cURus)	600 V
Voltage size D (cURus)	600 V	Certificate No. (cURus)	E60693
Conductor size Field wiring min. (cURus)	6 AWG	Conductor size Factory wiring min. (cURus)	6 AWG
Current size B (cURus)	175 A	Voltage size C (cURus)	600 V
Current size C (cURus)	175 A	Current size D (cURus)	5 A
Conductor size Field wiring max. (cURus)	00 AWG		

### Classifications

ETIM 8.0	EC000897	ETIM 9.0	EC000897
ETIM 10.0	EC000897	ECLASS 14.0	27-25-01-01
ECLASS 15.0	27-25-01-01		