

## TM-I 23 MM GE

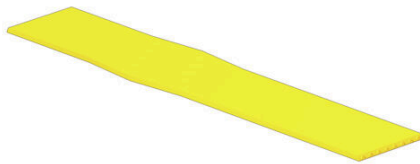
**Weidmüller Interface GmbH & Co. KG**

Klingenbergstraße 26

D-32758 Detmold

Germany

[www.weidmueller.com](http://www.weidmueller.com)



### Process reliability: TM-I

TM-I inlay tags have a guide tab which allows them to slide easily into the transparent sleeves from the type TM. Once the tag is in place, the tab is snapped off at the pre-determined break point. The ready-assembled sleeves can then be simply pushed over the conductors. Your benefits: large quantities can be efficiently pre-assembled in a single step.

### General ordering data

Version	TM-I, Insert markers, 1.3 - 35 mm, 23 x 4 mm, yellow
Order No.	<a href="#">2005670000</a>
Type	TM-I 23 MM GE
GTIN (EAN)	4050118390377
Qty.	2000 items

## TM-I 23 MM GE

Weidmüller Interface GmbH &amp; Co. KG

Klingenbergstraße 26

D-32758 Detmold

Germany

www.weidmueller.com

## Technical data

## Approvals

ROHS	Conform
------	---------

## Dimensions and weights

Height	23 mm	Height (inches)	0.9055 inch
Width	4 mm	Width (inches)	0.1575 inch
Net weight	0.16 g		

## Temperatures

Operating temperature range	-40...150 °C
-----------------------------	--------------

## Environmental Product Compliance

RoHS Compliance Status	Compliant without exemption
REACH SVHC	No SVHC above 0.1 wt%

## General data

Orientation of print	horizontal and vertical	Type of printing	neutral
Width	4 mm	UL 94 flammability rating	HB
Operating temperature range, max.	150 °C	Operating temperature range, min.	-40 °C
Colour	yellow	Halogen	No
Basic material	Polyester	Printed characters	without
compatible printer	<a href="#">THM MULTIMARK</a> , <a href="#">THM MULTIMARK PLUS</a>	Operating temperature range	-40...150 °C
Number per roll	2000		

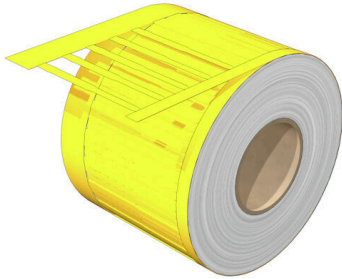
## Conductor and cable markers

Halogen	No	Conductor cross-section, max.	70 mm <sup>2</sup>
Conductor O.D., max.	35 mm	Conductor O.D., min.	1.3 mm
Conductor O.D.	1.3 - 35 mm	Cross-section for connected wire	70 mm <sup>2</sup>

## Classifications

ETIM 8.0	EC001530	ETIM 9.0	EC001530
ETIM 10.0	EC001530	ECLASS 14.0	27-28-11-02
ECLASS 15.0	27-28-11-02		

**Drawings**



## TM-I 23 MM GE

**Weidmüller Interface GmbH & Co. KG**  
Klingenbergstraße 26  
D-32758 Detmold  
Germany

[www.weidmueller.com](http://www.weidmueller.com)

## Accessories

### Ink ribbons

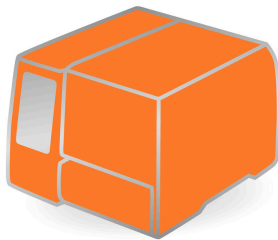


These printers produce excellent printing results thanks to the thermal transfer technique. Different materials and the user-friendly printing system under Windows optimise marking efforts.

#### General ordering data

Type	RIBBON MM 76/360 SW	Version	
Order No.	<a href="#">2005080000</a>	Ink ribbon	
GTIN (EAN)	4050118389951		
Qty.	1 ST		

### THM MULTIMARK

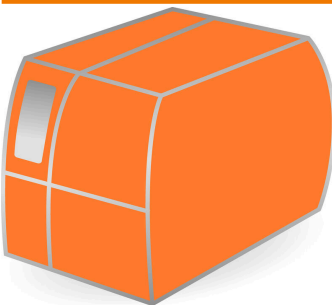


These printers produce excellent printing results thanks to the thermal transfer technique. Different materials and the user-friendly printing system under Windows optimise marking efforts.

#### General ordering data

Type	MULTIMARK ROLLER 115	Version	
Order No.	<a href="#">1357420000</a>		
GTIN (EAN)	4050118160314		
Qty.	1 ST		

### THM MULTIMARK PLUS



These printers produce excellent printing results thanks to the thermal transfer technique. Different materials and the user-friendly printing system under Windows optimise marking efforts.

#### General ordering data

Type	MULTIMARK PLUS ROLLER 1...	Version	
Order No.	<a href="#">2672590000</a>		
GTIN (EAN)	4050118708097		
Qty.	1 ST		