

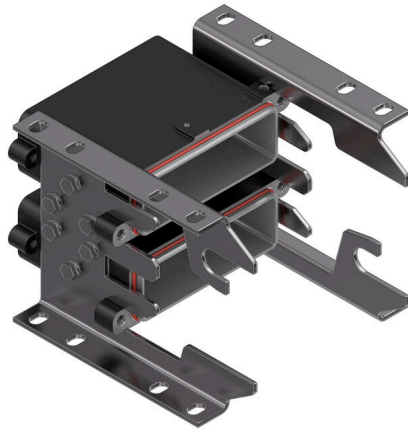
HDC IP68 HP 24B X2 AS S**Weidmüller Interface GmbH & Co. KG**

Klingenbergstraße 26

D-32758 Detmold

Germany

www.weidmueller.com



The RockStar® HighPower housings are manufactured from high-strength die-cast aluminium and offer perfect protection against harsh environmental conditions thanks to continual optimisation. The multi-part housing gives users the opportunity to examine work processes down to the last step in the workflow.

General ordering data

Order No.	2001720000
Type	HDC IP68 HP 24B X2 AS S
GTIN (EAN)	4050118384291
Qty.	1 items

HDC IP68 HP 24B X2 AS S

Weidmüller Interface GmbH & Co. KG
 Klingenbergstraße 26
 D-32758 Detmold
 Germany

www.weidmueller.com

Technical data

Approvals

ROHS	Conform
------	---------

Dimensions and weights

Depth	228 mm	Depth (inches)	8.9764 inch
Height	260 mm	Height (inches)	10.2362 inch
Width	183 mm	Width (inches)	7.2047 inch
Length	228 mm	Length (inches)	8.9764 inch
Net weight	3769.92 g		

Temperatures

Limit temperature	-40 °C ... 120 °C
-------------------	-------------------

Environmental Product Compliance

RoHS Compliance Status	Compliant without exemption
REACH SVHC	No SVHC above 0.1 wt%

General data

Number of poles	0	Type of connection	Screw connection
Design of housing	Base housing	UL 94 flammability rating	V-0
Colour	black, black (similar to RAL 9005)	Housing main material	diecast aluminium
Tightening torque, max. PE connection	11 Nm	Surface finish	Powder coating
Type	Base housing	Tightening torque, min. PE connection	11 Nm
Basic material	diecast aluminium	Series	HighPower
Rated voltage (DIN EN 61984)	0 V	Free from halogens	false
EMC housings	Yes	Protection degree	IP68, IP69, in plugged condition

General data

UL 94 flammability rating	V-0	Surface finish	Powder coating
Protection degree	IP68, IP69, in plugged condition	Series	HighPower

Version

Cover	without cover	Type of connection	Screw connection
Design of housing	Base housing	Design of locking system	Clamping yoke connection
Design	straight	Cable entry	No
Type	Base housing	Sealing	Silicone rubber
Colour (RAL)	RAL 9011, RAL 9005		

Important note

Product information	Depending on the intended operation, internally generated voltages can superimpose the working voltage and contain corresponding peaks. It is imperative to ensure that these peak voltages do not exceed the rated voltage. For applications outside of this specification, please contact us.
---------------------	---

Classifications

ETIM 8.0	EC002641	ETIM 9.0	EC002641
ETIM 10.0	EC002641	ECLASS 14.0	27-44-03-06

HDC IP68 HP 24B X2 AS S

Weidmüller Interface GmbH & Co. KG
Klingenbergstraße 26
D-32758 Detmold
Germany

www.weidmueller.com

Technical data

ECLASS 15.0

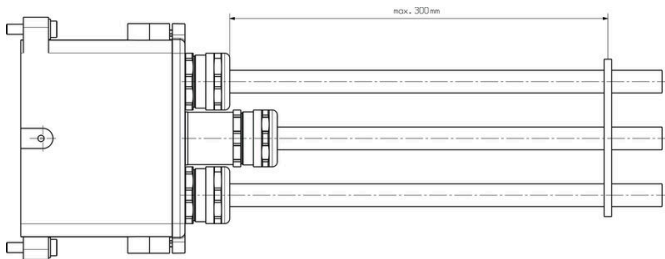
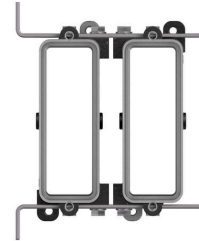
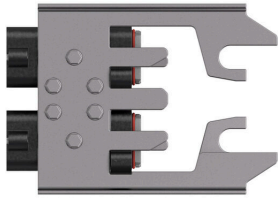
27-44-03-06

HDC IP68 HP 24B X2 AS S

Weidmüller Interface GmbH & Co. KG
Klingenbergstraße 26
D-32758 Detmold
Germany

Drawings

www.weidmueller.com



To avoid damage to the contacts and insulating sleeves, we recommend fixing the cable. The corresponding distances are shown in the following drawing. The cable fixation is not included in the scope of delivery.

