

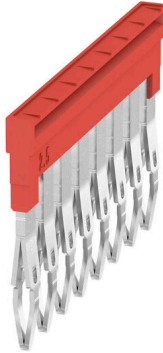
**ZQV 1.5N/8 RD****Weidmüller Interface GmbH & Co. KG**

Klingenbergstraße 26

D-32758 Detmold

Germany

www.weidmueller.com

**Product image**

The distribution or multiplication of a potential to adjoining terminal blocks is realized via a cross-connection. Additional wiring effort can be easily avoided. Even if the poles are broken out, contact reliability in the terminal blocks is still ensured. Our portfolio offers pluggable and screwable cross-connection systems for modular terminal blocks.

**General ordering data**

Version	Cross-connector (terminal), Plugged, red, 17.5 A, Number of poles: 8, Pitch in mm (P): 3.50, Insulated: Yes, Width: 26.5 mm
Order No.	<a href="#">1985770000</a>
Type	ZQV 1.5N/8 RD
GTIN (EAN)	4050118370508
Qty.	20 items

### Technical data

#### Approvals

ROHS	Conform
------	---------

#### Dimensions and weights

Depth	21.9 mm	Depth (inches)	0.8622 inch
Height	2.8 mm	Height (inches)	0.1102 inch
Width	26.5 mm	Width (inches)	1.0433 inch
Net weight	2.51 g		

#### Temperatures

Storage temperature	-25 °C...55 °C	Ambient temperature	-5 °C...40 °C
Continuous operating temp., min.	-60 °C	Continuous operating temp., max.	130 °C

#### Environmental Product Compliance

RoHS Compliance Status	Compliant without exemption
REACH SVHC	No SVHC above 0.1 wt%

#### Material data

Basic material	Wemid	Colour	red
UL 94 flammability rating	V-0		

#### Additional technical data

Type of fixing	Plugged	Explosion-tested version	Yes
----------------	---------	--------------------------	-----

#### Dimensions

Pitch in mm (P)	3.50 mm
-----------------	---------

#### General

Number of poles	8
-----------------	---

#### Rating data

Rated voltage	400 V	Nominal current	17.5 A
---------------	-------	-----------------	--------

#### Important note

Product information	Due to stability and temperature reasons It is only possible to break out 60% of contact elements. The usage of cross connectors reduces the rated voltage to 400 V.The voltage reduced to 25 V if cut cross connection with blank cut edges are used.
---------------------	--

#### Classifications

ETIM 8.0	EC000489	ETIM 9.0	EC000489
ETIM 10.0	EC000489	ECLASS 14.0	27-25-03-03
ECLASS 15.0	27-25-03-03		