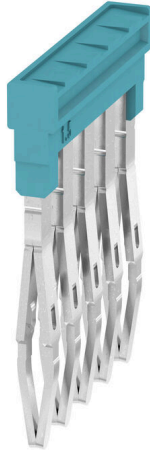


ZQV 1.5N/5 BL

Weidmüller Interface GmbH & Co. KG
Klingenbergstraße 26
D-32758 Detmold
Germany

www.weidmueller.com

Product image



The distribution or multiplication of a potential to adjoining terminal blocks is realized via a cross-connection. Additional wiring effort can be easily avoided. Even if the poles are broken out, contact reliability in the terminal blocks is still ensured. Our portfolio offers pluggable and screwable cross-connection systems for modular terminal blocks.

General ordering data

Version	Cross-connector (terminal), Plugged, blue, 17.5 A, Number of poles: 5, Pitch in mm (P): 3.50, Insulated: Yes, Width: 16 mm
Order No.	1985590000
Type	ZQV 1.5N/5 BL
GTIN (EAN)	4050118370430
Qty.	20 items

ZQV 1.5N/5 BL

Weidmüller Interface GmbH & Co. KG
 Klingenbergstraße 26
 D-32758 Detmold
 Germany

www.weidmueller.com

Technical data

Approvals

ROHS	Conform
------	---------

Dimensions and weights

Depth	21.9 mm	Depth (inches)	0.8622 inch
Height	2.8 mm	Height (inches)	0.1102 inch
Width	16 mm	Width (inches)	0.6299 inch
Net weight	1.54 g		

Temperatures

Storage temperature	-25 °C...55 °C	Ambient temperature	-60 °C...85 °C
Continuous operating temp., min.	-60 °C	Continuous operating temp., max.	130 °C

Environmental Product Compliance

RoHS Compliance Status	Compliant without exemption		
REACH SVHC	No SVHC above 0.1 wt%		
Product Carbon Footprint	Cradle to gate	0.103 kg CO2 eq.	

Material data

Basic material	Wemid	Colour	blue
UL 94 flammability rating	V-0		

Additional technical data

Type of fixing	Plugged	Explosion-tested version	Yes
----------------	---------	--------------------------	-----

Dimensions

Pitch in mm (P)	3.50 mm
-----------------	---------

General

Number of poles	5
-----------------	---

Rating data

Rated voltage	400 V	Nominal current	17.5 A
---------------	-------	-----------------	--------

Important note

Product information	Due to stability and temperature reasons It is only possible to break out 60% of contact elements. The usage of cross connectors reduces the rated voltage to 400 V. The voltage reduced to 25 V if cut cross connection with blank cut edges are used.
---------------------	---

Classifications

ETIM 8.0	EC000489	ETIM 9.0	EC000489
ETIM 10.0	EC000489	ECLASS 14.0	27-25-03-03
ECLASS 15.0	27-25-03-03		