

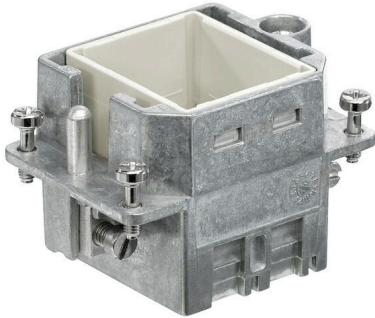
**HDC CFM 6 2M****Weidmüller Interface GmbH & Co. KG**

Klingenbergstraße 26

D-32758 Detmold

Germany

www.weidmueller.com



The sturdy CR6 module frames are available in polycarbonate or die-cast zinc.

The frames are designed so that two individual modules or a double module can be installed. The CR6 frames are designed to fit the size-3 housings.

**General ordering data**

Version	Heavy-duty connectors, HDC insert, ConCept frame
Order No.	<a href="#">1983830000</a>
Type	HDC CFM 6 2M
GTIN (EAN)	4032248688968
Qty.	1 items

## HDC CFM 6 2M

Weidmüller Interface GmbH &amp; Co. KG

Klingenbergstraße 26

D-32758 Detmold

Germany

www.weidmueller.com

## Technical data

## Approvals

Approvals



ROHS Conform

UL File Number Search [UL Website](#)

Certificate No. (cURus) E92202

## Dimensions and weights

Depth	50 mm	Depth (inches)	1.9685 inch
Height	35 mm	Height (inches)	1.378 inch
Width	34 mm	Width (inches)	1.3386 inch
Net weight	78.55 g		

## Temperatures

Limit temperature -40 °C ... 125 °C

## Environmental Product Compliance

RoHS Compliance Status Compliant

REACH SVHC Lead 7439-92-1, Potassium perfluorobutane sulfonate 29420-49-3

SCIP e98b2b24-ba23-41bf-8d19-Odda3647412f

## ConCept Pneumatic module

Colour Silver grey

## Dimensions

Width	34 mm	Total length base	51 mm
Height of plug	35 mm		

## General data

Tightening torque	0.5 Nm	Installation size	3
Colour	Silver grey	Tightening torque, max. PE connection	1.5 Nm
Type	Pin	Tightening torque, min. PE connection	0.5 Nm
Basic material	Diecast zinc	Series	ConCept frame
Free from halogens	false	Low smoke acc. DIN EN 45545-2	Yes
BG	3		

## Connection data PE

Connection type PE	Screw connection	Tightening torque, max. PE connection	1.5 Nm
Tightening torque, min. PE connection	0.5 Nm		

## Version

Installation size	3	Basic material	Diecast zinc
BG	3		

**Technical data**

**Classifications**

ETIM 8.0	EC000437	ETIM 9.0	EC000437
ETIM 10.0	EC000437	ECLASS 14.0	27-44-02-02
ECLASS 15.0	27-44-02-02		

## HDC CFM 6 2M

**Weidmüller Interface GmbH & Co. KG**  
 Klingenbergstraße 26  
 D-32758 Detmold  
 Germany

www.weidmueller.com

## Accessories

### Modul removal tool



Weidmüller offers a variety of crimping tools, no-contact tools, and fibre optic tools.

#### General ordering data

Type	HDC-DW-MOD	Version	
Order No.	<a href="#">1688200000</a>	Tool miscellaneous, Contact Removal Tool	
GTIN (EAN)	4008190857189		
Qty.	1 ST		

### Slotted screwdriver



VDE insulated slot-head screwdriver, SDI DIN 7437, ISO 2380/2, drive output acc. to DIN 5264, ISO 2380/1. SoftFinish grip

#### General ordering data

Type	SDIS 0.6X3.5X100	Version	
Order No.	<a href="#">9008390000</a>	Screwdriver, Screwdriver	
GTIN (EAN)	4032248056354		
Qty.	1 ST		
Type	SDS 0.6X3.5X100	Version	
Order No.	<a href="#">9008330000</a>	Screwdriver, Screwdriver	
GTIN (EAN)	4032248056286		
Qty.	1 ST		