

**HDC HVE 3+2 MT CTH****Weidmüller Interface GmbH & Co. KG**Klingenbergstraße 26  
D-32758 Detmold  
Germany

www.weidmueller.com



The HVE-series high-voltage inserts are equipped with two lagging contacts.  
The wire connection level is designed as a crimp contact.  
Thus practically no servicing is required. In addition, a secure and permanent connection is established which is resistant to vibrations.

Number of poles: 5

Rated current: 24 A

Rated voltage: 830 V

Nominal voltage acc. to UL/CSA: 600 V AC/DC

**General ordering data**

Version	HDC insert, Male, 830 V, 20 A, Number of poles: 5, Tension-clamp connection, Installation size: 4
Order No.	<a href="#">1967230000</a>
Type	HDC HVE 3+2 MT CTH
GTIN (EAN)	4032248661244
Qty.	1 items

**HDC HVE 3+2 MT CTH**

**Weidmüller Interface GmbH & Co. KG**  
 Klingenbergstraße 26  
 D-32758 Detmold  
 Germany

www.weidmueller.com

**Technical data**

**Approvals**

Approvals



ROHS Conform

**Dimensions and weights**

Depth	64 mm	Depth (inches)	2.5197 inch
Height	33.5 mm	Height (inches)	1.3189 inch
Width	34 mm	Width (inches)	1.3386 inch
Net weight	41.36 g		

**Temperatures**

Limit temperature -40 °C ... 125 °C

**Environmental Product Compliance**

RoHS Compliance Status	Compliant with exemption	
RoHS Exemption (if applicable/known)	6c	
REACH SVHC	Lead 7439-92-1, Potassium perfluorobutane sulfonate 29420-49-3	
SCIP	b67daa31-7dca-434d-8290-da7fb52f83a2	
Chemical resistance	Substance	Acetone
	Chemical resistance	Resistant
	Substance	Ammonia, watery
	Chemical resistance	Conditionally resistant
	Substance	Petrol
	Chemical resistance	Resistant
	Substance	Benzene
	Chemical resistance	Resistant
	Substance	Diesel oil
	Chemical resistance	Conditionally resistant
	Substance	Acetic acid, concentrated
	Chemical resistance	Resistant
	Substance	Potassium hydroxide
	Chemical resistance	Conditionally resistant
	Substance	Methanol
	Chemical resistance	Conditionally resistant
	Substance	Motor oil
Chemical resistance	Conditionally resistant	
Substance	Lye, diluted	
Chemical resistance	Resistant	
Substance	Hydrochlorofluorocarbons	
Chemical resistance	Conditionally resistant	
Substance	Outdoor use	
Chemical resistance	Conditionally resistant	

**Dimensions**

Width	34 mm	Total length base	64 mm
Height of plug	33.5 mm		

## HDC HVE 3+2 MT CTH

Weidmüller Interface GmbH &amp; Co. KG

Klingenbergstraße 26

D-32758 Detmold

Germany

www.weidmueller.com

## Technical data

## General data

Number of poles	5	Plugging cycles, silver	≥ 500
Type of connection	Tension-clamp connection	Installation size	4
UL 94 flammability rating	V-0	Volume resistance	≤2 mΩ
Colour	beige	Insulation resistance	1010 Ω
Insulating material	PC glass-fibre reinforced (UL-listed and railway-certified)	Insulating material group	IIIa
Conductor cross-section	2.5 mm <sup>2</sup>	Tightening torque, max. PE connection	1.5 Nm
Surface finish	Silver passivated	Type	Male
Pollution severity	3	Tightening torque, min. PE connection	1.2 Nm
Basic material	Copper alloy	Series	HVE
Rated voltage (DIN EN 61984)	830 V	Rated voltage according to UL/CSA	600 V AC/DC
Rated impulse voltage (DIN EN 61984)	8 kV	Rated current (DIN EN 61984)	20 A
Free from halogens	true	Low smoke acc. DIN EN 45545-2	Yes
BG	4	Number of signal contacts	2
Number of power contacts	3		

## Connection data PE

Connection type PE	Screw connection	Blade size, slotted (PE connection)	SD 0.8 x 4.0
Stripping length PE connection	10 mm	Tightening torque, max. PE connection	1.5 Nm
Tightening torque, min. PE connection	1.2 Nm	Fixing screw	M 4
Rated cross-section	4 mm <sup>2</sup>	Wire cross section, AWG (PE), min.	AWG 20
Wire cross section, AWG (PE), max.	AWG 12		

## Version

Blade size, slotted (screw connection)	SD 0.5 x 3.0	Wire connection cross section AWG, max.	AWG 14
Stripping length, rated connection	8 mm	Type of connection	Tension-clamp connection
Installation size	4	Volume resistance	≤2 mΩ
Wire connection cross section AWG, min.	AWG 24	Wire cross-section, solid, max.	4 mm <sup>2</sup>
Wire cross-section, solid, min.	0.5 mm <sup>2</sup>	Wire connection cross-section, finely stranded with wire-end ferrules DIN 46228/4, max.	4 mm <sup>2</sup>
Wire connection cross-section, finely stranded with wire-end ferrules DIN 46228/4, min.	0.5 mm <sup>2</sup>	Wire connection cross section, finely stranded, max.	4 mm <sup>2</sup>
Wire connection cross section, finely stranded, min.	0.5 mm <sup>2</sup>	Conductor cross-section, max.	2.5 mm <sup>2</sup>
Conductor cross-section, min.	0.25 mm <sup>2</sup>	Surface finish	Silver passivated
Basic material	Copper alloy	BG	4

## Classifications

ETIM 8.0	EC000438	ETIM 9.0	EC000438
ETIM 10.0	EC000438	ECLASS 14.0	27-44-02-05
ECLASS 15.0	27-44-02-05		

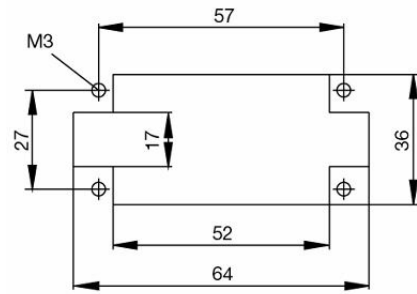
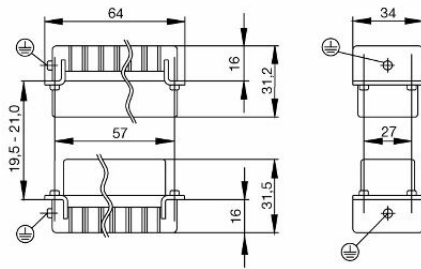
HDC HVE 3+2 MT CTH

Weidmüller Interface GmbH & Co. KG  
Klingenbergstraße 26  
D-32758 Detmold  
Germany

Drawings

www.weidmueller.com

Drawing



## HDC HVE 3+2 MT CTH

**Weidmüller Interface GmbH & Co. KG**  
 Klingenbergstraße 26  
 D-32758 Detmold  
 Germany

www.weidmueller.com

## Accessories

## Slotted screwdriver



VDE insulated slot-head screwdriver, SDI DIN 7437, ISO 2380/2, drive output acc. to DIN 5264, ISO 2380/1. SoftFinish grip

## General ordering data

Type	SDIS 0.5X3.0X100	Version
Order No.	<a href="#">9008380000</a>	Screwdriver, Screwdriver
GTIN (EAN)	4032248056347	
Qty.	1 ST	
Type	SDS 0.5X3.0X80	Version
Order No.	<a href="#">9008320000</a>	Screwdriver, Screwdriver
GTIN (EAN)	4032248056262	
Qty.	1 ST	
Type	SDIS 0.6X3.5X100	Version
Order No.	<a href="#">9008390000</a>	Screwdriver, Screwdriver
GTIN (EAN)	4032248056354	
Qty.	1 ST	
Type	SDS 0.6X3.5X100	Version
Order No.	<a href="#">9008330000</a>	Screwdriver, Screwdriver
GTIN (EAN)	4032248056286	
Qty.	1 ST	
Type	SDIS 0.8X4.0X100	Version
Order No.	<a href="#">9008400000</a>	Screwdriver, Screwdriver
GTIN (EAN)	4032248056361	
Qty.	1 ST	
Type	SDS 0.8X4.0X100	Version
Order No.	<a href="#">9008340000</a>	Screwdriver, Screwdriver
GTIN (EAN)	4032248056293	
Qty.	1 ST	

## Crosshead screwdriver Phillips



VDE insulated crosshead screwdriver, for Phillips screws, SDIK PH DIN 7438, ISO 8764/2-PH, output to ISO 8764-PH, SoftFinish grip

**HDC HVE 3+2 MT CTH**

**Weidmüller Interface GmbH & Co. KG**  
 Klingenbergstraße 26  
 D-32758 Detmold  
 Germany

www.weidmueller.com

**Accessories**

**General ordering data**

Type	SDIK PH1	Version
Order No.	<a href="#">9008570000</a>	Screwdriver, Screwdriver
GTIN (EAN)	4032248056569	
Qty.	1 ST	
Type	SDK PH1	Version
Order No.	<a href="#">9008480000</a>	Screwdriver, Screwdriver
GTIN (EAN)	4032248056477	
Qty.	1 ST	

**DSTV**



Various accessories are available for our inserts. This includes coding elements for the inserts.

**General ordering data**

Type	DSTV COST4	Version
Order No.	<a href="#">1471300000</a>	Heavy-duty connectors, Accessories, Coding System
GTIN (EAN)	4008190017354	
Qty.	100 ST	
Type	DSTV COBU5	Version
Order No.	<a href="#">1471500000</a>	Heavy-duty connectors, Accessories, Coding element
GTIN (EAN)	4008190178543	
Qty.	100 ST	