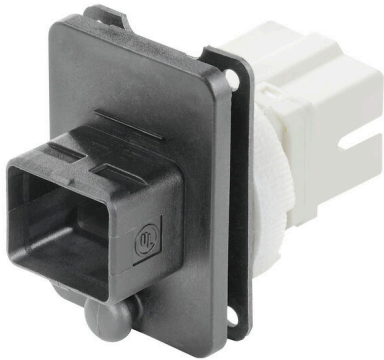


IE-BS-V04P-SCRJ2SC-MM-C

Weidmüller Interface GmbH & Co. KG
Klingenbergstraße 26
D-32758 Detmold
Germany

www.weidmueller.com



PushPull plug-in connector set according to IEC
61076-3-106 ver.4 (IEC24702), plastic with SC insert

General ordering data

Version	Flange FO, IP67, Version 4, coupling from SCRJ on 2*SC, Multimode, POF
Order No.	1964470000
Type	IE-BS-V04P-SCRJ2SC-MM-C
GTIN (EAN)	4032248649075
Qty.	10 items

IE-BS-V04P-SCRJ2SC-MM-C

Weidmüller Interface GmbH & Co. KG
 Klingenbergstraße 26
 D-32758 Detmold
 Germany

www.weidmueller.com

Technical data

Approvals

ROHS	Conform
------	---------

Dimensions and weights

Depth	48.3 mm	Depth (inches)	1.9016 inch
Height	38 mm	Height (inches)	1.4961 inch
Width	27 mm	Width (inches)	1.063 inch
Net weight	3.25 g		

Temperatures

Storage temperature	Operating temperature	-40 °C...70 °C
Installation temperature		

Environmental Product Compliance

RoHS Compliance Status	Compliant without exemption
REACH SVHC	No SVHC above 0.1 wt%

General data

Description of article	Version 4, coupling from SCRJ on 2*SC	Colour	Miscellaneous
Housing main material	PA UL 94 V0	Protection degree	IP67
Plugging cycles	500	Fibre type	Multimode, POF
Insertion loss	≤ 0.4 dB	Connection 1	SC
Connection 2	SCRJ	Return loss (attenuation)	≥ 30 dB

General standards

Connector standard	IEC 61076-3-106 Var. 4, IEC 61754-4, IEC 61754-24
--------------------	---

Classifications

ETIM 8.0	EC000752	ETIM 9.0	EC000752
ETIM 10.0	EC000752	ECLASS 14.0	19-17-01-16
ECLASS 15.0	19-17-01-16		

Installation cut-out



Mounting cut-out: 1. With central screw connection / 2. For mounting with four M3 screws