

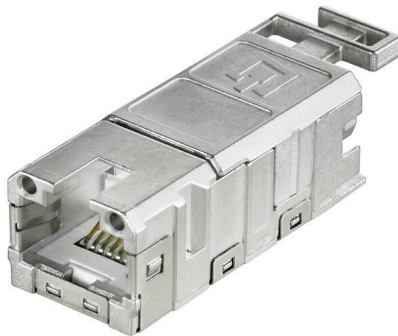
IE-BI-RJ45-FJ-P**Weidmüller Interface GmbH & Co. KG**

Klingenbergstraße 26

D-32758 Detmold

Germany

www.weidmueller.com



FrontCom® Vario integrates multiple functions in only one single frame. The system is easy to install and you can select from a wide range of data, signal and power modules. In addition to being extremely compact, FrontCom® Vario offers a number of unique product features that will make your project planning and work activities secure, fast and future-proof. Furthermore, the FrontCom® Vario system has an attractive housing design that, by the way, offers highest impact-resistance and fully meets the requirements of IP 65 protection class.

General ordering data

Version	RJ45 insert socket, Connector for base, PROFINET
Order No.	1963830000
Type	IE-BI-RJ45-FJ-P
GTIN (EAN)	4032248646159
Qty.	10 items

Technical data

Approvals

Approvals



ROHS	Conform
UL File Number Search	UL Website
Certificate no. (cULus)	E316369

Dimensions and weights

Net weight	16 g
------------	------

Temperatures

Storage temperature	Operating temperature	-40 °C...70 °C
Installation temperature	Humidity	0...93 % rel. humidity

Environmental Product Compliance

RoHS Compliance Status	Compliant without exemption
REACH SVHC	No SVHC above 0.1 wt%

General data

Product type	RJ45 insert socket	Protection degree	IP67 with housing
Insert type	Insert data SteadyTec		

General data

Connection 1	RJ45	Connection 2	IDC
Description of article	Connector for base	Wiring	PROFINET
Colour	Miscellaneous	Shock resistance acc. to IEC 605 12-6-3	250 ms-2
Vibration resistance acc. to IEC 605 12-6-4	50 ms-2 sinusoidal (9... 500 Hz)	Humidity	0...93 % rel. humidity
Housing main material	Zinc diecast	Insulation cross-section, min.	0.85 mm
Insulation cross-section, max.	1.6 mm	Category	Cat.5 (ISO/IEC 11801)
Contact material	Spring steel, Ni 1.2 µm	Contact surface	Gold over Nickel, Au ≥ 0.8 µm
Connection diameter, solid	0.4...0.64 mm	Conductor connection cross-section, solid (AWG)	AWG 24...AWG 22
Connection diameter, flexible	0.48...0.76 mm	Conductor connection cross-section, flexible (AWG)	AWG 26...AWG 22
Shielding	360° all-round enclosure, FS 2.8 Ground connection for equipotential bonding	Protection degree	IP67 with housing
Plugging cycles	750	Ability to reconnect	≥ 10 cycles for AWG 23-26, ≥ 4 cycles for AWG 22

Electrical properties

Contact resistance	≤ 20 mΩ	Dielectric strength, contact / shield	≥ 1500 V AC/DC
Dielectric strength, contact / contact	≥ 1000 V AC/DC	Insulation resistance	500 MΩ
Current-carrying capacity at 50 °C	1 A	PoE / PoE+	conforming to IEEE 802.3bt

Technical data

General standards

Certificate No. (DNV)	TAA000022B	Connector standard	IEC 60603-7-51
UL standard for communication accessories	UL 1863	Application-specific communication cable facilities	PROFINET installation instructions
IP protection classes	IEC 60529	Certificate no. (cULus)	E316369

Important note

Product information	RJ45 inserts for plug-in connectors ver.1 / 4 / 5 / 14, HDC and junction boxes IE-OM...; IE-OP...; IE-CC...
---------------------	---

Classifications

ETIM 8.0	EC001121	ETIM 9.0	EC001121
ETIM 10.0	EC001121	ECLASS 14.0	27-44-03-90
ECLASS 15.0	27-44-03-90		

Printing



IE-BI-RJ45-FJ-P

Weidmüller Interface GmbH & Co. KG
 Klingenbergstraße 26
 D-32758 Detmold
 Germany

www.weidmueller.com

Accessories

Pressing tool



When working with live voltages, you must follow special guidelines and use special tools - tools which have been specially produced and tested for this purpose.

Weidmüller offers a complete line of pliers which comply with national and international testing standards.

All pliers are produced and tested according to DIN EN 60900.

The pliers are ergonomically designed to fit to the hand form, and thus feature an improved hand position. The fingers are not pressed together - this results in less fatigue during operation.

General ordering data

Type	PWZ RJ45	Version	
Order No.	1118040000	Pressing tools	
GTIN (EAN)	4032248899197		
Qty.	1 ST		

Cable-lug sleeves



Insulated tab-connector sleeves made from PVC with copper sleeve

- Commercially available designs
- Not soldered
- With conical entry funnel

General ordering data

Type	LIF 1,5F288 R	Version	
Order No.	9200520000	cable lug, terminal end, Insulated cable connector, 1,5 mm ² , 0,5 mm ² -	
GTIN (EAN)	4032248410361	1,5 mm ² , red	
Qty.	100 ST		