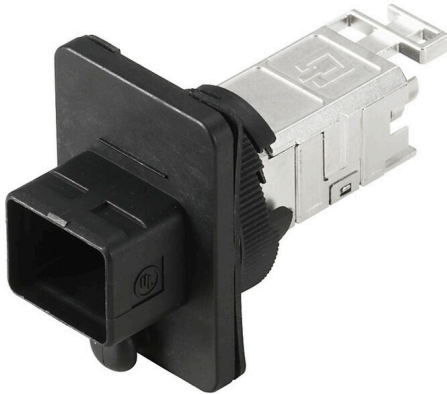


IE-BS-V04P-RJ45-FJ-A

Weidmüller Interface GmbH & Co. KG
Klingenbergstraße 26
D-32758 Detmold
Germany

www.weidmueller.com



PushPull plug-in connector set according to IEC
61076-3-106 ver.4 (IEC24702), plastic with RJ45 insert

General ordering data

Version	Flange RJ45, IP67, Variant 4, IDC, EIA/TIA 586 A, Cat.6A / Class EA (ISO/IEC 11801 2010)
Order No.	1963500000
Type	IE-BS-V04P-RJ45-FJ-A
GTIN (EAN)	4032248645596
Qty.	10 items

IE-BS-V04P-RJ45-FJ-A

Weidmüller Interface GmbH & Co. KG
 Klingenbergstraße 26
 D-32758 Detmold
 Germany

www.weidmueller.com

Technical data

Approvals

Approvals



ROHS	Conform
UL File Number Search	UL Website
Certificate no. (cULus)	E316369

Dimensions and weights

Net weight	4.4 g
------------	-------

Temperatures

Storage temperature	Operating temperature	-40 °C...70 °C
Installation temperature		

Environmental Product Compliance

RoHS Compliance Status	Compliant without exemption
REACH SVHC	No SVHC above 0.1 wt%

General data

Connection 1	RJ45	Connection 2	IDC
Description of article	Variant 4, IDC, EIA/TIA 586 A	Wiring	TIA-568A
Seal material	NBR	Housing main material	PA UL 94 V0
Insulation cross-section, max.	1.6 mm	Category	Cat.6A / Class EA (ISO/IEC 11801 2010)
Contact surface	Gold over nickel	Connection diameter, solid	0.4...0.64 mm
Conductor connection cross-section, solid (AWG)	AWG 24...AWG 22	Connection diameter, flexible	0.48...0.76 mm
Conductor connection cross-section, flexible (AWG)	AWG 26...AWG 22	Shielding	360°; all-round enclosure
Protection degree	IP67	Plugging cycles	750

Electrical properties

Dielectric strength, contact / shield	≥ 1500 V AC/DC	Dielectric strength, contact / contact	≥ 1000 V AC/DC
PoE / PoE+	conforming to IEEE 802.3bt		

General standards

Connector standard	IEC 61076-3-106 Var. 4, IEC 60603-7-51	Certificate no. (cULus)	E316369
--------------------	--	-------------------------	---------

Classifications

ETIM 8.0	EC001121	ETIM 9.0	EC001121
ETIM 10.0	EC001121	ECLASS 14.0	27-44-03-90
ECLASS 15.0	27-44-03-90		

Installation cut-out



Mounting cut-out: 1. With central screw connection / 2. For mounting with four M3 screws