

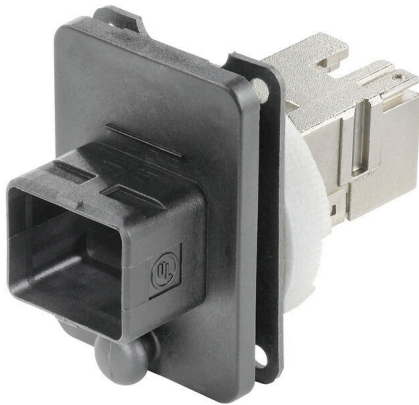
**IE-BS-V04P-RJ45-C****Weidmüller Interface GmbH & Co. KG**

Klingenbergstraße 26

D-32758 Detmold

Germany

www.weidmueller.com



PushPull plug-in connector set according to IEC  
61076-3-106 ver.4 (IEC24702), plastic with RJ45 insert

**General ordering data**

Version	Flange RJ45, IP67, Variant 4, RJ45 / RJ45 coupling, Cat.6A / Class EA (ISO/IEC 11801 2010)
Order No.	<a href="#">1963490000</a>
Type	IE-BS-V04P-RJ45-C
GTIN (EAN)	4032248645589
Qty.	10 items

## IE-BS-V04P-RJ45-C

**Weidmüller Interface GmbH & Co. KG**  
 Klingenbergstraße 26  
 D-32758 Detmold  
 Germany

www.weidmueller.com

## Technical data

## Approvals

Approvals



ROHS Conform

UL File Number Search [UL Website](#)

Certificate no. (cULus) E316369

## Dimensions and weights

Net weight 37.8 g

## Temperatures

Storage temperature Operating temperature -40 °C...70 °C

Installation temperature

## Environmental Product Compliance

RoHS Compliance Status Compliant without exemption

REACH SVHC No SVHC above 0.1 wt%

## General data

Connection 1	RJ45	Connection 2	RJ45
Description of article	Variant 4, RJ45 / RJ45 coupling	Seal material	NBR
Housing main material	PA UL 94 V0	Category	Cat.6A / Class EA (ISO/IEC 11801 2010)
Contact surface	Gold over nickel	Shielding	360°; all-round enclosure
Protection degree	IP67	Plugging cycles	750

## Electrical properties

Dielectric strength, contact / shield  $\geq 1500$  V AC/DC Dielectric strength, contact / contact  $\geq 1000$  V AC/DC

## General standards

Connector standard IEC 61076-3-106 Var. 4, IEC 60603-7-51 Certificate no. (cULus) E316369

## Classifications

ETIM 8.0	EC001121	ETIM 9.0	EC001121
ETIM 10.0	EC001121	ECLASS 14.0	27-44-03-90
ECLASS 15.0	27-44-03-90		

Installation cut-out



Mounting cut-out: 1. With central screw connection / 2. For mounting with four M3 screws