

IE-PI-RJ45-FH

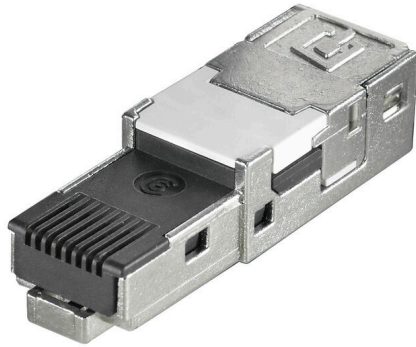
Weidmüller Interface GmbH & Co. KG

Klingenbergstraße 26

D-32758 Detmold

Germany

www.weidmueller.com



RJ45 inserts for plug-in connectors ver.1 / 4 / 5 / 14,
HDC and junction boxes IE-OM...; IE-OP...; IE-CC...

General ordering data

Version	Plug insert RJ45 IDC, Plug insert RJ45, no tools required, TIA-568A, EIA/TIA T568 B, PROFINET
Order No.	1962730000
Type	IE-PI-RJ45-FH
GTIN (EAN)	4032248654017
Qty.	10 items

Technical data

Approvals

Approvals



ROHS	Conform
UL File Number Search	UL Website
Certificate No. (cURus)	E471884
Certificate no. (cULus)	E316369

Dimensions and weights

Net weight	12.7 g
------------	--------

Temperatures

Storage temperature	Operating temperature	-40 °C...70 °C
Installation temperature		

Environmental Product Compliance

RoHS Compliance Status	Compliant without exemption
REACH SVHC	No SVHC above 0.1 wt%

General data

Fire load	49 kJ	Connection 1	RJ45
Connection 2	IDC	Description of article	Plug insert RJ45, no tools required
Wiring	TIA-568A, EIA/TIA T568 B, PROFINET	Colour	Miscellaneous
Housing main material	Zinc diecast	Insulation cross-section, min.	0.85 mm
Insulation cross-section, max.	1.6 mm	Category	Cat.6A / Class EA (ISO/IEC 11801 2010)
Contact surface	Gold over Nickel, Au ≥ 0.8 µm	Connection diameter, solid	0.4...0.64 mm
Conductor connection cross-section, solid (AWG)	AWG 24...AWG 22	Connection diameter, flexible	0.48...0.76 mm
Conductor connection cross-section, flexible (AWG)	AWG 26...AWG 22	Conductor connection cross-section, extremely flexible	, Approval of the cable by Weidmüller necessary
Conductor connection cross-section, extremely flexible (AWG)	, Approval of the cable by Weidmüller necessary	Note, very finely stranded line connection	Approval of the cable by Weidmüller necessary
Shielding	360° all-round enclosure	Protection degree	IP67 with housing
Plugging cycles	750	Ability to reconnect	≥ 10 cycles (for the same or larger cross-section)

Electrical properties

Contact resistance	≤ 20 mΩ	Dielectric strength, contact / shield	≥ 1500 V AC/DC
Dielectric strength, contact / contact	≥ 1000 V AC/DC	Insulation resistance	500 MΩ
Current-carrying capacity at 50 °C	1 A	PoE / PoE+	conforming to IEEE 802.3at

Technical data**General standards**

Certificate No. (cURus)	E471884	Connector standard	IEC 60603-7-51
UL standard for communication accessories	UL 1863	Application-specific communication cable facilities	PROFINET installation instructions
IP protection classes	IEC 60529	Certificate no. (cULus)	E316369

Important note

Product information RJ45 inserts for plug-in connectors ver.1 / 4 / 5 / 14 and HDC

Classifications

ETIM 8.0	EC001121	ETIM 9.0	EC001121
ETIM 10.0	EC001121	ECLASS 14.0	27-44-03-90
ECLASS 15.0	27-44-03-90		

Drawings

Printing

