

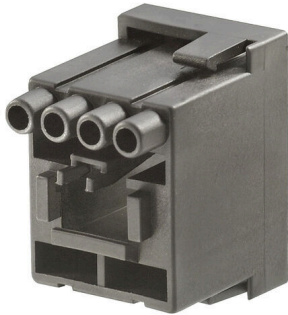
HDC CM RJ45 M**Weidmüller Interface GmbH & Co. KG**

Klingenbergstraße 26

D-32758 Detmold

Germany

www.weidmueller.com



The ConCept system features flexible and all-purpose modules. Depending on the application, you can choose from a wide variety of modules based on your requirements. The modules differ according to electrical specifications and their respective wire connection methods. Any number of combinations can be created with the ever-growing number of modules.

General ordering data

| | |
|------------|---|
| Version | Heavy-duty connectors, HDC insert, ConCept module |
| Order No. | 1950280000 |
| Type | HDC CM RJ45 M |
| GTIN (EAN) | 4032248628872 |
| Qty. | 1 items |

HDC CM RJ45 M

Weidmüller Interface GmbH & Co. KG
 Klingenbergstraße 26
 D-32758 Detmold
 Germany

www.weidmueller.com

Technical data

Approvals

Approvals



ROHS Conform

Dimensions and weights

Net weight 25 g

Environmental Product Compliance

RoHS Compliance Status Compliant without exemption

REACH SVHC No SVHC above 0.1 wt%

ConCept Pneumatic module

Colour black

General data

| | | | |
|-------------------------------|-------|--------------------------------------|------------------|
| Number of poles | 8 | Type of connection | Crimp connection |
| Colour | black | Insulating material | PA 66 |
| Plugging cycles | ≥ 500 | Type | Pin |
| Surge voltage category | None | Series | ConCept module |
| Rated voltage (DIN EN 61984) | 125 V | Rated impulse voltage (DIN EN 61984) | 1.8 kV |
| Rated current (DIN EN 61984) | 1.5 A | Free from halogens | false |
| Low smoke acc. DIN EN 45545-2 | Yes | | |

Version

| | | | |
|---|----------------------|---|---------------------|
| Type of connection | Crimp connection | Wire cross-section, solid, max. | 2.5 mm ² |
| Wire cross-section, solid, min. | 0.14 mm ² | Wire connection cross-section, finely stranded with wire-end ferrules DIN 46228/4, max. | 2.5 mm ² |
| Wire connection cross-section, finely stranded with wire-end ferrules DIN 46228/4, min. | 0.14 mm ² | Wire connection cross section, finely stranded, max. | 2.5 mm ² |
| Wire connection cross section, finely stranded, min. | 0.14 mm ² | Conductor cross-section, max. | 2.5 mm ² |
| Conductor cross-section, min. | 0.14 mm ² | | |

Classifications

| | | | |
|-------------|-------------|-------------|-------------|
| ETIM 8.0 | EC000438 | ETIM 9.0 | EC000438 |
| ETIM 10.0 | EC000438 | ECLASS 14.0 | 27-44-02-92 |
| ECLASS 15.0 | 27-44-02-92 | | |