

## KLIPPON K01 VMQ

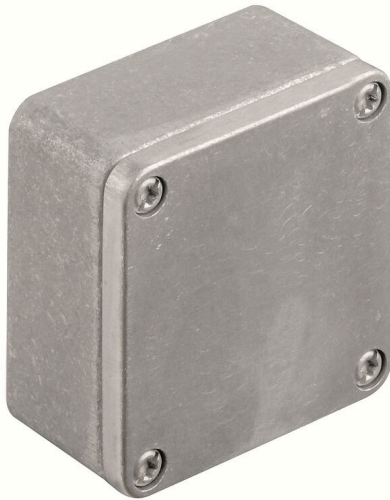
**Weidmüller Interface GmbH & Co. KG**

Klingenbergstraße 26

D-32758 Detmold

Germany

[www.weidmueller.com](http://www.weidmueller.com)



The aluminium Klippon® K enclosures are suitable for use in an extremely wide range of different areas. Various components can be installed inside the enclosures, and will benefit in particular from the high temperature resistance, the excellent IP protection and the good impact resistance.

No matter what kind of application the customer is planning, Weidmüller is able to provide a wide range of aluminium enclosures precisely fitting the customer's requirements.

Our extensive product range offers the following advantages:

- Available in two surface finishes: natural and powder-coated (RAL 7001)
- With chloroprene moulded seal as standard (silicone moulded seal optionally available)
- Standardised closure system with Torx slotted screw head for 19 enclosure sizes
- Mounting holes outside of the gasket area
- High IP protection classes: IP66, IP67 and IP68 according to DIN EN 60529
- Impact resistance of up to 7 (10) Joules
- The enclosures are approved according, cULus and DNV GL as well as the empty enclosure standard.
- Suitable for railway applications according to EN 45545-2:2013
- Alloy is resistant to salt water

- Standardised distributor enclosures with threaded holes and a variety of terminal configurations

### General ordering data

Version	Klippon K (aluminium empty enclosure), Empty enclosure, Aluminium enclosure, Height: 64 mm, Width: 58 mm, Depth: 34 mm, Basic material: Aluminium AlSi12, untreated, silver
Order No.	<a href="#">1939540000</a>
Type	KLIPPON K01 VMQ
GTIN (EAN)	4032248615377
Qty.	10 items

**KLIPPON K01 VMO**

**Weidmüller Interface GmbH & Co. KG**  
 Klingenbergstraße 26  
 D-32758 Detmold  
 Germany

www.weidmueller.com

**Technical data**

**Approvals**

Approvals



ROHS	Conform
UL File Number Search	<a href="#">UL Website</a>
Certificate no. (cULus)	E197061

**Dimensions and weights**

Depth	34 mm	Depth (inches)	1.3386 inch
Height	64 mm	Height (inches)	2.5197 inch
Width	58 mm	Width (inches)	2.2835 inch
Mounting dimension - height	36 mm	Mounting dimension - width	58 mm
Net weight	147 g		

**Temperatures**

Operating temperature	-50 °C...135 °C
-----------------------	-----------------

**Environmental Product Compliance**

RoHS Compliance Status	Compliant without exemption
REACH SVHC	No SVHC above 0.1 wt%

**Cable glands, left**

M12	1	M16	1
-----	---	-----	---

**Cable glands, right**

M16	1	M12	1
-----	---	-----	---

**Cable glands, top/bottom**

M12	1	M16	1
-----	---	-----	---

**Certificate numbers enclosure**

Declaration of Conformatiy No. (DoC LVD)	DE PS2410 160412 0011SS03	Certificate No. (DNV)	TAE00002SM
Approval conditions	cULus, RMRS, DNV	Certificate no. (cULus)	E197061

**General information**

Material thickness of cover	2.5 mm	Material thickness of enclosure	3.1 mm
Operating temperature, max.	135 °C	Operating temperature, min.	-50 °C
Lid attachment	M4 torx stainless steel screws with slot	Standards	EN 45545-2:2013
Surface finish	untreated	Impact resistance	10 J version standard
Protection degree	IP66, IP67, IP68	Basic material	Aluminium AlSi12
Seal material	Silicone	Torque for lid screws	2.5 Nm
Integral fixing	Threaded holes M3	Enclosure attachment	Holes 4 mm
Note: protection class	IP68 (t=72h, h=1m)	Protection class (UL)	Type 4, Type 4X

## KLIPPON K01 VMQ

**Weidmüller Interface GmbH & Co. KG**  
 Klingenbergstraße 26  
 D-32758 Detmold  
 Germany

[www.weidmueller.com](http://www.weidmueller.com)

## Technical data

Number of lid screws	4	Access opening: width	51.8 mm
Flange plate	No	Max. payload	0.37 kg
Lid	Yes	Access opening: height	57.8 mm
Areas of use	Process industry, Transportation, Marine engineering, Packaging industry, Harbour facilities, Machine construction		

### vertical assembly

WDU 2,5 / ZDU 2,5 / IDU 2,5

\*

### Classifications

ETIM 8.0	EC000261	ETIM 9.0	EC000261
ETIM 10.0	EC000261	ECLASS 14.0	27-18-01-01
ECLASS 15.0	27-18-01-01		

**Drawings**

**Dimensioned drawing**

---

---

---

---