

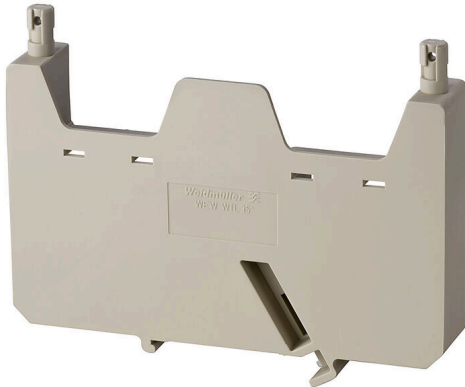
WEW WTL 35**Weidmüller Interface GmbH & Co. KG**

Klingenbergstraße 26

D-32758 Detmold

Germany

www.weidmueller.com

Product image

Weidmüller's range of products includes end brackets that guarantee a permanent, reliable mounting on the terminal rail and prevent sliding. Versions with and without screws are available. The end brackets include marking options, also for group markers, and also a test plug holder.

General ordering data

Version	W-Series, End bracket
Order No.	1925040000
Type	WEW WTL 35
GTIN (EAN)	4032248566143
Qty.	10 items

Technical data

Approvals

ROHS	Conform
------	---------

Dimensions and weights

Depth	79 mm	Depth (inches)	3.1102 inch
Height	100 mm	Height (inches)	3.937 inch
Width	18 mm	Width (inches)	0.7087 inch
Net weight	27.1 g		

Temperatures

Storage temperature	-25 °C...55 °C	Ambient temperature	-50 °C...75 °C
Continuous operating temp., min.	-50 °C	Continuous operating temp., max.	120 °C

Environmental Product Compliance

RoHS Compliance Status	Compliant without exemption
REACH SVHC	No SVHC above 0.1 wt%

Material data

Basic material	Wemid	Colour	dark beige
UL 94 flammability rating	V-0		

System specifications

Mounting rail	TS 35
---------------	-------

Additional technical data

Installation advice	Direct mounting	Type of mounting	when screwed in
Locking	for screw fixing		

Dimensions

TS 35 offset	50 mm
--------------	-------

General

Installation advice	Direct mounting	Mounting rail	TS 35
---------------------	-----------------	---------------	-------

Classifications

ETIM 8.0	EC001041	ETIM 9.0	EC001041
ETIM 10.0	EC001041	ECLASS 14.0	27-25-03-02
ECLASS 15.0	27-25-03-02		