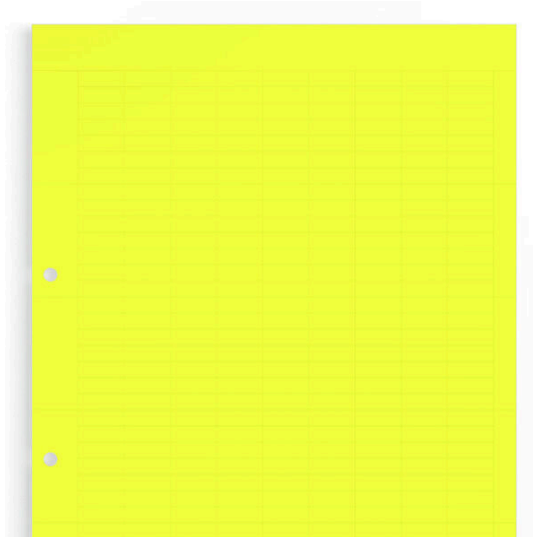


ESO 8/20 DIN A4 GE

Weidmüller Interface GmbH & Co. KG
Klingenbergstraße 26
D-32758 Detmold
Germany

www.weidmueller.com



Similar to illustration

General ordering data

Version	Terminal markers, Insert markers, 20 x 7 mm, yellow
Order No.	1919900000
Type	ESO 8/20 DIN A4 GE
GTIN (EAN)	4032248556908
Qty.	10 items
Delivery status	Discontinued
Available until	2025-08-31T00:00:00+02:00
Alternative product	ELS 8/20 MM GE

Technical data

Approvals

ROHS	Conform
------	---------

Dimensions and weights

Depth	1 mm	Depth (inches)	0.0394 inch
Height	20 mm	Height (inches)	0.7874 inch
Width	7 mm	Width (inches)	0.2756 inch
Net weight	13.5 g		

Temperatures

Operating temperature range	-40...80 °C
-----------------------------	-------------

Environmental Product Compliance

RoHS Compliance Status	Compliant without exemption
REACH SVHC	No SVHC above 0.1 wt%

General data

Material colour according to resistance code	4		
Orientation of print	horizontal and vertical		
Number per sheet	342		
Width	7 mm		
UL 94 flammability rating	HB		
Operating temperature range, max.	80 °C		
Operating temperature range, min.	-40 °C		
Colour	yellow		
Basic material	Paper		
Printed characters	without		
Number of markers per packaging unit	Form of supply	Label sheet	
Number of markers per combination	1 Label sheet = Insert markers		
Operating temperature range	-40...80 °C		

Classifications

ETIM 8.0	EC000761	ETIM 9.0	EC000761
ETIM 10.0	EC000761	ECLASS 14.0	27-28-11-01
ECLASS 15.0	27-28-11-01		

Drawings



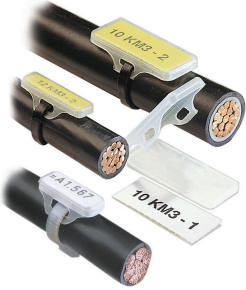
ESO 8/20 DIN A4 GE

Weidmüller Interface GmbH & Co. KG
Klingenbergstraße 26
D-32758 Detmold
Germany

Accessories

www.weidmueller.com

WKM for inlay tags



The halogen-free, transparent pocket of the WKM offers outstanding protection against environmental influences. Thanks to firm fixation with cable ties, it is suitable for almost all wire cross-sections.

The pre-printed tags are simply inserted into the WKM holder and secured with a clip. WKM cable markers are the right solution for maximum efficiency in on-site marking. Your advantage when using WKM cables

- Paper and polyester labels can be printed individually with conventional office printers
- The robust design in combination with MultiCard ELS tags guarantees maximum protection against environmental influences

General ordering data

Type	WKM 8/20	Version	
Order No.	1753490000	WKM, Conductor and cable markers, 7 - 115 mm, 20 x 8 mm, Wire	
GTIN (EAN)	4032248010615	and cable markers, Transparent	
Qty.	50 ST		