

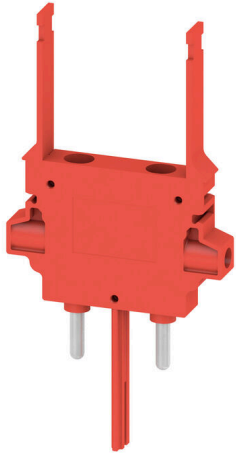
WTA 8 TN-KO**Weidmüller Interface GmbH & Co. KG**

Klingenbergstraße 26

D-32758 Detmold

Germany

www.weidmueller.com



Test adapters and test plugs are used for the electrical connection between terminal blocks and the test equipment. In this way, an electrical contact can be established in the wired state and measurements can be done easily.

General ordering data

Version	Test adapter (terminal), 1.5 mm ² , 205 V, 6 A
Order No.	1915470000
Type	WTA 8 TN-KO
GTIN (EAN)	4032248548040
Qty.	25 items

WTA 8 TN-KO

Weidmüller Interface GmbH & Co. KG

Klingenbergstraße 26
D-32758 Detmold
Germany

www.weidmueller.com

Technical data

Approvals

ROHS	Conform
------	---------

Dimensions and weights

Depth	71 mm	Depth (inches)	2.7953 inch
Height	39 mm	Height (inches)	1.5354 inch
Width	6 mm	Width (inches)	0.2362 inch
Net weight	9.44 g		

Temperatures

Storage temperature	-25 °C...55 °C	Ambient temperature	-50 °C...55 °C
Continuous operating temp., min.	-50 °C	Continuous operating temp., max.	100 °C

Environmental Product Compliance

RoHS Compliance Status	Compliant with exemption
RoHS Exemption (if applicable/known)	6c
REACH SVHC	Lead 7439-92-1
SCIP	e1c310ef-6b67-4efa-80a6-d307472f4de9

Material data

Basic material	Wemid	Colour	red
UL 94 flammability rating	V-2		

Additional technical data

With snap-in pegs	No	Installation advice	Direct mounting
-------------------	----	---------------------	-----------------

Conductors for clamping (rated connection)

Stripping length	7 mm	Type of connection	Screw connection
Wire connection cross section, finely stranded, max.	2.5 mm ²	Wire connection cross section, finely stranded, min.	0.5 mm ²
Connection cross-section, stranded, max.	2.5 mm ²	Wire connection cross-section, solid core, max.	2.5 mm ²
Wire connection cross-section, solid core, min.	0.5 mm ²		

Dimensions

Pitch in mm (P)	6.00 mm	Height with TS 35	78 mm
-----------------	---------	-------------------	-------

General

Number of poles	1	Installation advice	Direct mounting
-----------------	---	---------------------	-----------------

Rating data

Rated cross-section	1.5 mm ²	Rated voltage	205 V
Nominal current	6 A	Volume resistance according to IEC 60947-7-x	1.83 mΩ
Power loss in accordance with IEC 60947-7-x	0.56 W		

Technical data

Classifications

ETIM 8.0	EC002555	ETIM 9.0	EC002555
ETIM 10.0	EC002555	ECLASS 14.0	27-25-03-04
ECLASS 15.0	27-25-03-04		