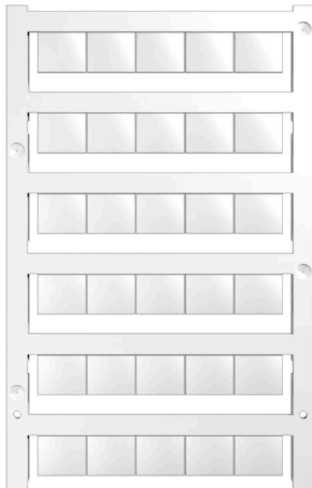


WS 10/12 MC SDR**Weidmüller Interface GmbH & Co. KG**

Klingenbergstraße 26

D-32758 Detmold

Germany

www.weidmueller.com**Similar to illustration**

WS markers are the perfect match for the W-series connectors. Thanks to their system compatibility, the WS tags can also be used with the I-series and the Z-series. The large marking surfaces do not only permit long character strings but also multi-line text.

WS markers are ideal for labels with long, customised character strings. Thanks to the proven MultiCard format, printing with PrintJet CONNECT oder/or Plotter is possible.

- Can be fitted in strips or individually
- Markers in proven MultiCard format

For custom printing: Please send us a file of our labeling software M-Print PRO or M-Print PRO Online (without installation) for your labeling specifications.

General ordering data

| | |
|------------|--|
| Version | WS, Terminal marker, 10 x 12 mm, Pitch in mm (P): 12.00 Weidmueller, To customer specification |
| Order No. | 1906060000 |
| Type | WS 10/12 MC SDR |
| GTIN (EAN) | 4032248528219 |
| Qty. | 60 items |

Technical data

Approvals

| | |
|------|---------|
| ROHS | Conform |
|------|---------|

Dimensions and weights

| | | | |
|------------|--------|-----------------|-------------|
| Height | 10 mm | Height (inches) | 0.3937 inch |
| Width | 12 mm | Width (inches) | 0.4724 inch |
| Net weight | 0.28 g | | |

Temperatures

| | |
|-----------------------------|--------------|
| Operating temperature range | -40...100 °C |
|-----------------------------|--------------|

Environmental Product Compliance

| | | | |
|--------------------------|-----------------------------|-----------------|--|
| RoHS Compliance Status | Compliant without exemption | | |
| REACH SVHC | No SVHC above 0.1 wt% | | |
| Product Carbon Footprint | Cradle to gate | 0.003 kg CO2eq. | |

General data

| | | | |
|--|-------------------------------|-----------|--|
| Material colour according to resistance code | 9 | | |
| Printing method | MC Laser | | |
| Width | 12 mm | | |
| UL 94 flammability rating | V-2 | | |
| Operating temperature range, max. | 100 °C | | |
| Operating temperature range, min. | -40 °C | | |
| Colour | To customer specification | | |
| Halogen | No | | |
| Basic material | Polyamide 66 | | |
| Colour of printing | black | | |
| Printed characters | Requires M-Print PRO File | | |
| Number of markers per packaging unit | Form of supply | MultiCard | |
| Number of markers per combination | 1 MultiCard = Terminal marker | | |
| Operating temperature range | -40...100 °C | | |
| Application/manufacturer | Weidmueller | | |

Connector markers

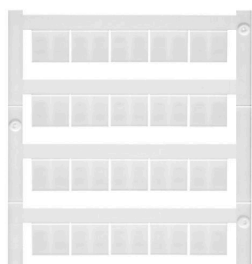
| | |
|-----------------|----------|
| Pitch in mm (P) | 12.00 mm |
|-----------------|----------|

Classifications

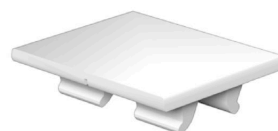
| | | | |
|-------------|-------------|-------------|-------------|
| ETIM 8.0 | EC000761 | ETIM 9.0 | EC000761 |
| ETIM 10.0 | EC000761 | ECLASS 14.0 | 27-28-11-01 |
| ECLASS 15.0 | 27-28-11-01 | | |

Drawings

Similar to illustration



Similar to illustration



Drawing

