

HDC 40D SDLU 1M25G**Weidmüller Interface GmbH & Co. KG**

Klingenbergstraße 26

D-32758 Detmold

Germany

www.weidmueller.com

The special die-cast alloy and the multi-layered surface sealing provide complete protection for the HDC housings.

The cleverly designed interlock system is manufactured from stainless steel. This guarantees a long lifespan with high resistance to corrosion and impact.

The housing interlock system provides integrated safety. Our unique, patented spring system provides the housing interlock with a secure grip and prevents accidental opening.

The laser marking allows for easy and quick identification. Each housing is permanently labelled with a laser marking so that each product can be quickly designated and positioned.

Weidmüller RockStar® IP 65 / NEMA Type 4X housings - your first choice for industrial housings with IP 65 protection.

General ordering data

| | |
|------------|---|
| Version | HDC enclosures, Installation size: 6, Protection degree: IP65, in plugged condition, Base housing, End-locking clamp, lower side, high, with cover, Size of cable entries: M 25 |
| Order No. | 1903070000 |
| Type | HDC 40D SDLU 1M25G |
| GTIN (EAN) | 4032248592975 |
| Qty. | 1 items |

HDC 40D SDLU 1M25G

Weidmüller Interface GmbH & Co. KG

Klingenbergstraße 26

D-32758 Detmold

Germany

www.weidmueller.com

Technical data

Approvals

Approvals



ROHS Conform

UL File Number Search [UL Website](#)

Certificate No. (cURus) E92202

Dimensions and weights

| | | | |
|-----------------------------|---------|----------------------------|-------------|
| Height | 102 mm | Height (inches) | 4.0157 inch |
| Width | 99.5 mm | Width (inches) | 3.9173 inch |
| Mounting dimension - height | 45 mm | Mounting dimension - width | 105 mm |
| Net weight | 555 g | | |

Temperatures

Limit temperature -40 °C ... 125 °C

Environmental Product Compliance

| | |
|------------------------|--|
| RoHS Compliance Status | Compliant without exemption |
| REACH SVHC | Potassium perfluorobutane sulfonate 29420-49-3 |
| SCIP | e98b2b24-ba23-41bf-8d19-0dda3647412f |

| | | |
|---------------------|---------------------|-------------------------|
| Chemical resistance | Substance | Acetone |
| | Chemical resistance | Conditionally resistant |
| | Substance | Drilling oil |
| | Chemical resistance | Resistant |
| | Substance | Diesel |
| | Chemical resistance | Resistant |
| | Substance | Ethyl alcohol |
| | Chemical resistance | Resistant |
| | Substance | Transmission oil |
| | Chemical resistance | Resistant |
| | Substance | Hydraulic oil |
| | Chemical resistance | Resistant |
| | Substance | Coolant |
| | Chemical resistance | Resistant |
| | Substance | Petroleum benzine |
| | Chemical resistance | Resistant |
| | Substance | Sweat |
| | Chemical resistance | Resistant |
| | Substance | Premium gasoline |
| | Chemical resistance | Conditionally resistant |
| | Substance | Water |
| | Chemical resistance | Resistant |
| | Substance | UV |
| | Chemical resistance | Unstable |
| | Substance | Ozone |
| | Chemical resistance | Unstable |

Dimensions

| | | | |
|----------------------|--------|---------------|-----------|
| Hole pitch length A2 | 105 mm | Cable entry | w. thread |
| Width housing C | 43 mm | Width base C1 | 56.5 mm |

HDC 40D SDLU 1M25G

Weidmüller Interface GmbH & Co. KG
 Klingenbergstraße 26
 D-32758 Detmold
 Germany

www.weidmueller.com

Technical data

| | | | |
|----------------------|---------|---------------------|--------|
| Total length housing | 93.3 mm | Height of housing B | 102 mm |
| Height of base B1 | 5 mm | | |

General data

| | | | |
|-----------------------|----------------------------|-----------------------------|--|
| Housing main material | diecast aluminium | Surface finish | Powder coating |
| Protection degree | IP65, in plugged condition | Protection class note | Protection class with secured cover: IP 65 |
| EMC housings | No | Material of locking element | Stainless steel, rust-proof |

Version

| | | | |
|--------------------------------|-------------------|------------------------------|-------------------------------|
| Size of cable entries | M 25 | Top part/bottom part/lid | lower part |
| Cover | with cover | Number of cable entry on top | 0 |
| Number of cable entry sideways | 1 | Design of cover | with cover |
| Design of housing | Base housing | Design of locking system | End-locking clamp, lower side |
| Design | high | Installation size | 6 |
| Cable entry | w. thread | Type | Base housing |
| Clamp version | End-locking clamp | Sealing | NBR |
| Internal thread | M 25 | Colour (RAL) | RAL 7035 |
| BG | 6 | Suitable for ModuPlug® | Yes |

Classifications

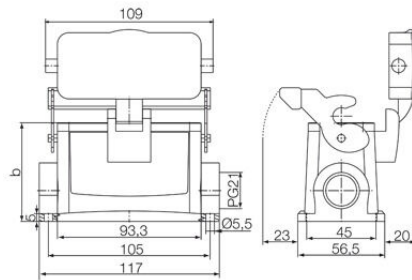
| | | | |
|-------------|-------------|-------------|-------------|
| ETIM 8.0 | EC000437 | ETIM 9.0 | EC000437 |
| ETIM 10.0 | EC000437 | ECLASS 14.0 | 27-44-02-02 |
| ECLASS 15.0 | 27-44-02-02 | | |

HDC 40D SDLU 1M25G

Weidmüller Interface GmbH & Co. KG
Klingenbergstraße 26
D-32758 Detmold
Germany

Drawings

www.weidmueller.com



HDC 40D SDLU 1M25G

Weidmüller Interface GmbH & Co. KG
 Klingenbergstraße 26
 D-32758 Detmold
 Germany

www.weidmueller.com

Accessories

Hood, Cable Entry at top



The special die-cast alloy and the multi-layered surface sealing provide complete protection for the HDC housings.

The cleverly designed interlock system is manufactured from stainless steel. This guarantees a long lifespan with high resistance to corrosion and impact.

The housing interlock system provides integrated safety. Our unique, patented spring system provides the housing interlock with a secure grip and prevents accidental opening.

The laser marking allows for easy and quick identification. Each housing is permanently labelled with a laser marking so that each product can be quickly designated and positioned.

Weidmüller RockStar® IP 65 / NEMA Type 4X housings - your first choice for industrial housings with IP 65 protection.

General ordering data

| | | |
|------------|----------------------------|--|
| Type | HDC 40D TOLU 1M40G | Version |
| Order No. | 1139680000 | HDC enclosures, Installation size: 6, Protection degree: IP65, in |
| GTIN (EAN) | 4032248959792 | plugged condition, Cable entry from top, Plug housing, End-locking |
| Qty. | 1 ST | clamp, lower side, high, Size of cable entries: M 40 |
| Type | HDC 16B TOLU 1PG21G | Version |
| Order No. | 1657960000 | HDC enclosures, Installation size: 6, Protection degree: IP65, in |
| GTIN (EAN) | 4008190411015 | plugged condition, Cable entry from top, Plug housing, End-locking |
| Qty. | 1 ST | clamp, lower side, Standard, Size of cable entries: PG 21 |
| Type | HDC 40D TOLU 1PG29G | Version |
| Order No. | 1658020000 | HDC enclosures, Installation size: 6, Protection degree: IP65, in |
| GTIN (EAN) | 4008190411077 | plugged condition, Cable entry from top, Plug housing, End-locking |
| Qty. | 1 ST | clamp, lower side, high, Size of cable entries: PG 29 |
| Type | HDC 40D TOLU 1M32G | Version |
| Order No. | 1787100000 | HDC enclosures, Installation size: 6, Protection degree: IP65, in |
| GTIN (EAN) | 4032248204441 | plugged condition, Cable entry from top, Plug housing, End-locking |
| Qty. | 1 ST | clamp, lower side, high, Size of cable entries: M 32 |
| Type | HDC 16B TOLU 1M25G | Version |
| Order No. | 1788230000 | HDC enclosures, Installation size: 6, Protection degree: IP65, in |
| GTIN (EAN) | 4032248205769 | plugged condition, Cable entry from top, Plug housing, End-locking |
| Qty. | 1 ST | clamp, lower side, Standard, Size of cable entries: M 25 |
| Type | HDC 16B TOLU 1M32G | Version |
| Order No. | 1804630000 | HDC enclosures, Installation size: 6, Protection degree: IP65, in |
| GTIN (EAN) | 4032248267552 | plugged condition, Cable entry from top, Plug housing, End-locking |
| Qty. | 1 ST | clamp, lower side, Standard, Size of cable entries: M 32 |

HDC 40D SDLU 1M25G

Weidmüller Interface GmbH & Co. KG
 Klingenbergstraße 26
 D-32758 Detmold
 Germany

www.weidmueller.com

Accessories

Hood, Cable Entry sideways



The special die-cast alloy and the multi-layered surface sealing provide complete protection for the HDC housings.

The cleverly designed interlock system is manufactured from stainless steel. This guarantees a long lifespan with high resistance to corrosion and impact.

The housing interlock system provides integrated safety. Our unique, patented spring system provides the housing interlock with a secure grip and prevents accidental opening.

The laser marking allows for easy and quick identification. Each housing is permanently labelled with a laser marking so that each product can be quickly designated and positioned.

Weidmüller RockStar® IP 65 / NEMA Type 4X housings - your first choice for industrial housings with IP 65 protection.

General ordering data

| | | |
|------------|----------------------------|---|
| Type | HDC 16B TSLU 1PG21G | Version |
| Order No. | 1657850000 | HDC enclosures, Installation size: 6, Protection degree: IP65, in |
| GTIN (EAN) | 4008190410902 | plugged condition, Cable entry from side, Plug housing, End-locking |
| Qty. | 1 ST | clamp, lower side, Standard, Size of cable entries: PG 21 |
| Type | HDC 40D TSLU 1PG21G | Version |
| Order No. | 1657890000 | HDC enclosures, Installation size: 6, Protection degree: IP65, in |
| GTIN (EAN) | 4008190410933 | plugged condition, Cable entry from side, Plug housing, End-locking |
| Qty. | 1 ST | clamp, lower side, high, Size of cable entries: PG 21 |
| Type | HDC 40D TSLU 1PG29G | Version |
| Order No. | 1657910000 | HDC enclosures, Installation size: 6, Protection degree: IP65, in |
| GTIN (EAN) | 4008190410964 | plugged condition, Cable entry from side, Plug housing, End-locking |
| Qty. | 1 ST | clamp, lower side, high, Size of cable entries: PG 29 |
| Type | HDC 40D TSLU 1M32G | Version |
| Order No. | 1787040000 | HDC enclosures, Installation size: 6, Protection degree: IP65, in |
| GTIN (EAN) | 4032248204281 | plugged condition, Cable entry from side, Plug housing, End-locking |
| Qty. | 1 ST | clamp, lower side, high, Size of cable entries: M 32 |
| Type | HDC 40D TSLU 1M25G | Version |
| Order No. | 1787050000 | HDC enclosures, Installation size: 6, Protection degree: IP65, in |
| GTIN (EAN) | 4032248204298 | plugged condition, Cable entry from side, Plug housing, End-locking |
| Qty. | 1 ST | clamp, lower side, high, Size of cable entries: M 25 |
| Type | HDC 16B TSLU 1M25G | Version |
| Order No. | 1788200000 | HDC enclosures, Installation size: 6, Protection degree: IP65, in |
| GTIN (EAN) | 4032248205738 | plugged condition, Cable entry from side, Plug housing, End-locking |
| Qty. | 1 ST | clamp, lower side, Standard, Size of cable entries: M 25 |
| Type | HDC 16B TSLU 1M32G | Version |
| Order No. | 1804640000 | HDC enclosures, Installation size: 6, Protection degree: IP65, in |
| GTIN (EAN) | 4032248267569 | plugged condition, Cable entry from side, Plug housing, End-locking |
| Qty. | 1 ST | clamp, lower side, Standard, Size of cable entries: M 32 |
| Type | HDC 40D TSLU 1M40G | Version |
| Order No. | 1804650000 | HDC enclosures, Installation size: 6, Protection degree: IP65, in |
| GTIN (EAN) | 4032248267576 | plugged condition, Cable entry from side, Plug housing, End-locking |
| Qty. | 1 ST | clamp, lower side, high, Size of cable entries: M 40 |