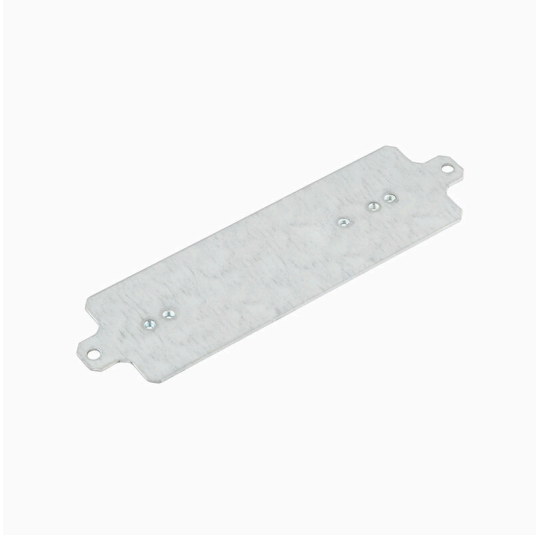


MOPL K3 N FE

Weidmüller Interface GmbH & Co. KG
 Klingenbergstraße 26
 D-32758 Detmold
 Germany

www.weidmueller.com

Product image



The system accessories for the Klippon® K enclosure series allows you to easily adapt the enclosures to meet the specific requirements of every application.

- DIN Rails TS 35 and TS15
- Mounting plates
- Hinges
- Wall-mounted holder

Weidmüller can manufacture and supply this enclosure - according to customer specifications - fitted with all necessary terminals and cable glands.

General ordering data

Version	Klippon K (aluminium empty enclosure), Mounting plate, Mounting plate, Height: 44 mm, Width: 156 mm, Depth: 3 mm, Basic material: Sheet steel, galvanized, galvanized, silver
Order No.	1898210000
Type	MOPL K3 N FE
GTIN (EAN)	4032248516797
Qty.	1 items

MOPL K3 N FE

Weidmüller Interface GmbH & Co. KG

Klingenbergstraße 26

D-32758 Detmold

Germany

www.weidmueller.com

Technical data

Approvals

ROHS	Conform
------	---------

Dimensions and weights

Depth	3 mm	Depth (inches)	0.1181 inch
Height	44 mm	Height (inches)	1.7323 inch
Width	156 mm	Width (inches)	6.1417 inch
Mounting dimension - height	22 mm	Mounting dimension - width	147.2 mm
Net weight	71 g		

Temperatures

Operating temperature

Environmental Product Compliance

RoHS Compliance Status	Compliant without exemption
REACH SVHC	No SVHC above 0.1 wt%

General information

Material thickness	2 mm	Surface finish	galvanized
Basic material	Sheet steel, galvanized		

General information on accessories

Material thickness	2 mm	Surface finish	galvanized
Basic material	Sheet steel, galvanized	Mounting dimension - width	147.2 mm
Mounting dimension - height	22 mm		

Classifications

ETIM 8.0	EC000213	ETIM 9.0	EC000213
ETIM 10.0	EC000213	ECLASS 14.0	27-40-06-39
ECLASS 15.0	27-40-06-39		