

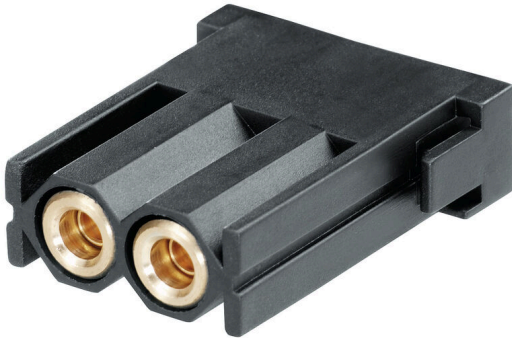
HDC-CM-2BPN4.0**Weidmüller Interface GmbH & Co. KG**

Klingenbergstraße 26

D-32758 Detmold

Germany

www.weidmueller.com



Flexible and all-purpose – the proper solution for many applications ConCept is a modular system consisting of modules and frames. Together, they form a complete insert that can easily be integrated into an HDC housing. The patented modular system allows you to put together individual connector variants.

A variety of modules for power, signal and data transmission are supplemented further by modules intended for pneumatics, and SC/LC cables.

The sturdy, one-piece module-frame design (optionally available in polycarbonate or die-cast zinc) and the integrated module-release aid both improve handling of the product.

General ordering data

Version	Heavy-duty connectors, HDC insert, ConCept module
Order No.	1894760000
Type	HDC-CM-2BPN4.0
GTIN (EAN)	4032248509232
Qty.	1 items

HDC-CM-2BPN4.0

Weidmüller Interface GmbH & Co. KG
 Klingenbergstraße 26
 D-32758 Detmold
 Germany

www.weidmueller.com

Technical data

Approvals

Approvals



ROHS Conform

Dimensions and weights

Height	40.4 mm	Height (inches)	1.5905 inch
Width	11.4 mm	Width (inches)	0.4488 inch
Length	34 mm	Length (inches)	1.3386 inch
Net weight	23.76 g		

Temperatures

Limit temperature -40 °C ... 80 °C

Environmental Product Compliance

RoHS Compliance Status	Compliant
REACH SVHC	Lead 7439-92-1
SCIP	89f35219-185b-45 1d-94d0-702fad8bee24

ConCept Pneumatic module

UL 94 flammability rating	V-0	Colour	black
Number of valves	2	Module body material	PA 6.6
Shutoff	Yes	Test pressure	10 bar
Contact travel	4 mm	Hose type	Only use PTFE hoses
Connection cross-section (internal)	4 mm	Sealing material	NBR

Dimensions

Width	11.4 mm	Total length base	34 mm
Height of socket	40.4 mm		

General data

Number of poles	2	Type of connection	Hose connection (pneumatic)
UL 94 flammability rating	V-0	Colour	black
Insulating material	PC glass-fibre reinforced (UL-listed and railway-certified)	Type	Female
Basic material	Polyamide, glass fibre-reinforced	Series	ConCept module
Free from halogens	false	Low smoke acc. DIN EN 45545-2	Yes

Version

Type of connection	Hose connection (pneumatic)	Basic material	Polyamide, glass fibre-reinforced
--------------------	-----------------------------	----------------	-----------------------------------

HDC-CM-2BPN4.0

Weidmüller Interface GmbH & Co. KG
Klingenbergstraße 26
D-32758 Detmold
Germany

www.weidmueller.com

Technical data

Classifications

ETIM 8.0	EC002943	ETIM 9.0	EC002943
ETIM 10.0	EC002943	ECLASS 14.0	27-44-02-92
ECLASS 15.0	27-44-02-92		

HDC-CM-2BPN4.0

Weidmüller Interface GmbH & Co. KG
Klingenbergstraße 26
D-32758 Detmold
Germany

www.weidmueller.com

Accessories

Modul removal tool



Weidmüller offers a variety of crimping tools, no-contact tools, and fibre optic tools.

General ordering data

Type	HDC-DW-MOD	Version	
Order No.	1688200000	Tool miscellaneous, Contact Removal Tool	
GTIN (EAN)	4008190857189		
Qty.	1 ST		