

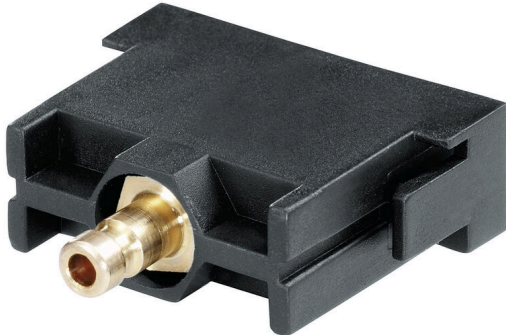
HDC-CM-1SPN4.0**Weidmüller Interface GmbH & Co. KG**

Klingenbergstraße 26

D-32758 Detmold

Germany

www.weidmueller.com



Flexible and all-purpose – the proper solution for many applications ConCept is a modular system consisting of modules and frames. Together, they form a complete insert that can easily be integrated into an HDC housing. The patented modular system allows you to put together individual connector variants.

A variety of modules for power, signal and data transmission are supplemented further by modules intended for pneumatics, and SC/LC cables.

The sturdy, one-piece module-frame design (optionally available in polycarbonate or die-cast zinc) and the integrated module-release aid both improve handling of the product.

General ordering data

Version	Heavy-duty connectors, HDC insert, ConCept module
Order No.	1894740000
Type	HDC-CM-1SPN4.0
GTIN (EAN)	4032248509218
Qty.	1 items

HDC-CM-1SPN4.0

Weidmüller Interface GmbH & Co. KG
 Klingenbergstraße 26
 D-32758 Detmold
 Germany

www.weidmueller.com

Technical data

Approvals

Approvals



ROHS Conform

Dimensions and weights

Height	25.4 mm	Height (inches)	1 inch
Width	11.4 mm	Width (inches)	0.4488 inch
Length	34 mm	Length (inches)	1.3386 inch
Net weight	10 g		

Temperatures

Limit temperature -40 °C ... 80 °C

Environmental Product Compliance

RoHS Compliance Status	Compliant
REACH SVHC	Lead 7439-92-1
SCIP	89f35219-185b-45 1d-94d0-702fad8bee24

ConCept Pneumatic module

UL 94 flammability rating	V-0	Colour	black
Number of valves	1	Module body material	PA 6.6
Shutoff	No	Test pressure	10 bar
Contact travel	4 mm	Hose type	Only use PTFE hoses
Connection cross-section (internal)	4 mm	Sealing material	NBR

Dimensions

Width	11.4 mm	Total length base	34 mm
Height of plug	25.4 mm		

General data

Number of poles	1	Type of connection	Hose connection (pneumatic)
UL 94 flammability rating	V-0	Colour	black
Insulating material	PC glass-fibre reinforced (UL-listed and railway-certified)	Type	Pin
Basic material	Polyamide, glass fibre-reinforced	Series	ConCept module
Free from halogens	false	Low smoke acc. DIN EN 45545-2	Yes

Version

Type of connection	Hose connection (pneumatic)	Basic material	Polyamide, glass fibre-reinforced
--------------------	-----------------------------	----------------	-----------------------------------

HDC-CM-1SPN4.0

Weidmüller Interface GmbH & Co. KG
Klingenbergstraße 26
D-32758 Detmold
Germany

www.weidmueller.com

Technical data

Classifications

ETIM 8.0	EC002943	ETIM 9.0	EC002943
ETIM 10.0	EC002943	ECLASS 14.0	27-44-02-92
ECLASS 15.0	27-44-02-92		

HDC-CM-1SPN4.0

Weidmüller Interface GmbH & Co. KG
Klingenbergstraße 26
D-32758 Detmold
Germany

www.weidmueller.com

Accessories

Modul removal tool



Weidmüller offers a variety of crimping tools, no-contact tools, and fibre optic tools.

General ordering data

Type	HDC-DW-MOD	Version	
Order No.	1688200000	Tool miscellaneous, Contact Removal Tool	
GTIN (EAN)	4008190857189		
Qty.	1 ST		