

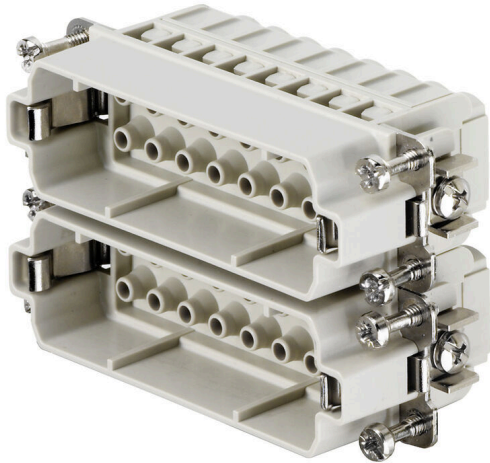
HDC HA 16 MC 17 - 32**Weidmüller Interface GmbH & Co. KG**

Klingenbergstraße 26

D-32758 Detmold

Germany

www.weidmueller.com



The small and slim HA series can be used wherever space is limited.

The wire connection level is designed for crimp contacts. The proven crimp connection method has been in standard use for decades.

Crimp contacts are not included in the scope of delivery of inserts.

General ordering data

Version	HDC insert, Male, 250 V, 16 A, Number of poles: 16, Crimp connection, Installation size: 5
Order No.	1875620000
Type	HDC HA 16 MC 17 - 32
GTIN (EAN)	4032248465927
Qty.	1 items

Technical data

Approvals

Approvals



ROHS Conform

Dimensions and weights

Depth	73 mm	Depth (inches)	2.874 inch
Height	29 mm	Height (inches)	1.1417 inch
Width	23 mm	Width (inches)	0.9055 inch
Net weight	33 g		

Temperatures

Limit temperature -40 °C ... 125 °C

Environmental Product Compliance

RoHS Compliance Status	Compliant with exemption	
RoHS Exemption (if applicable/known)	6c	
REACH SVHC	Lead 7439-92-1, Potassium perfluorobutane sulfonate 29420-49-3	
SCIP	b67daa31-7dca-434d-8290-da7fb52f83a2	
Chemical resistance	Substance	Acetone
	Chemical resistance	Resistant
	Substance	Ammonia, watery
	Chemical resistance	Conditionally resistant
	Substance	Petrol
	Chemical resistance	Resistant
	Substance	Benzene
	Chemical resistance	Resistant
	Substance	Diesel oil
	Chemical resistance	Conditionally resistant
	Substance	Acetic acid, concentrated
	Chemical resistance	Resistant
	Substance	Potassium hydroxide
	Chemical resistance	Conditionally resistant
	Substance	Methanol
	Chemical resistance	Conditionally resistant
	Substance	Motor oil
	Chemical resistance	Conditionally resistant
Substance	Lye, diluted	
Chemical resistance	Resistant	
Substance	Hydrochlorofluorocarbons	
Chemical resistance	Conditionally resistant	
Substance	Outdoor use	
Chemical resistance	Conditionally resistant	

Dimensions

Width	23 mm	Total length base	73 mm
Height of plug	29 mm		

HDC HA 16 MC 17 - 32

Weidmüller Interface GmbH & Co. KG
 Klingenbergstraße 26
 D-32758 Detmold
 Germany

www.weidmueller.com

Technical data

General data

Number of poles	16		
Plugging cycles, silver	≥ 500		
Plugging cycles, gold	≥ 500		
Type of connection	Crimp connection		
Installation size	5		
UL 94 flammability rating	V-0		
Volume resistance	≤2 mΩ		
Colour	beige		
Insulation resistance	1010 Ω		
Insulating material	PC glass-fibre reinforced (UL-listed and railway-certified)		
Insulating material group	IIIa		
Conductor cross-section	2.5 mm ²		
Tightening torque, max. PE connection	1.5 Nm		
Type	Male		
Pollution severity	3		
Tightening torque, min. PE connection	1.2 Nm		
Basic material	Copper alloy		
Series	HA		
Rated voltage (DIN EN 61984)	250 V		
Rated voltage according to UL/CSA	600 V AC/DC		
Rated impulse voltage (DIN EN 61984)	4 kV		
Rated current (DIN EN 61984)	16 A		
Rated current (UR)	Wire connection cross section AWG	AWG 12	
	Rated current	20 A	
	Wire connection cross section AWG	AWG 14	
	Rated current	15 A	
	Wire connection cross section AWG	AWG 16	
	Rated current	10 A	
	Wire connection cross section AWG	AWG 18	
	Rated current	7 A	
	Wire connection cross section AWG	AWG 20	
	Rated current	5 A	
	Rated current (cUR)	Wire connection cross section AWG	AWG 12
		Rated current	19 A
		Wire connection cross section AWG	AWG 14
		Rated current	15 A
Wire connection cross section AWG		AWG 16	
Rated current		12 A	
Wire connection cross section AWG		AWG 18	
Rated current		8 A	
Wire connection cross section AWG		AWG 20	
Rated current		8 A	
Free from halogens		true	
Low smoke acc. DIN EN 45545-2		Yes	
BG		5	
Number of signal contacts		0	
Number of power contacts	16		

Connection data PE

Connection type PE	Screw connection, Crimp connection	Blade size, slotted (PE connection)	SD 0.8 x 4.0
Stripping length PE connection	10 mm	Tightening torque, max. PE connection	1.5 Nm
Tightening torque, min. PE connection	1.2 Nm	Fixing screw	M 4
Rated cross-section	2.5 mm ²	Wire cross section, AWG (PE), min.	AWG 20
Wire cross section, AWG (PE), max.	AWG 14		

Creation date 27.06.2026 09:26:07 MEZ

Catalogue status / Drawings

HDC HA 16 MC 17 - 32

Weidmüller Interface GmbH & Co. KG
 Klingenbergstraße 26
 D-32758 Detmold
 Germany

www.weidmueller.com

Technical data

Version

Wire connection cross section AWG, max.	AWG 12	Stripping length, rated connection	8 mm
Type of connection	Crimp connection	Installation size	5
Volume resistance	≤2 mΩ	Wire connection cross section AWG, min.	AWG 20
Wire cross-section, solid, max.	2.5 mm ²	Wire cross-section, solid, min.	0.5 mm ²
Wire connection cross-section, finely stranded with wire-end ferrules DIN 46228/4, max.	2.5 mm ²	Wire connection cross-section, finely stranded with wire-end ferrules DIN 46228/4, min.	0.5 mm ²
Wire connection cross section, finely stranded, max.	2.5 mm ²	Wire connection cross section, finely stranded, min.	0.5 mm ²
Conductor cross-section, max.	4 mm ²	Conductor cross-section, min.	0.5 mm ²
Basic material	Copper alloy	BG	5

Classifications

ETIM 8.0	EC000438	ETIM 9.0	EC000438
ETIM 10.0	EC000438	ECLASS 14.0	27-44-02-05
ECLASS 15.0	27-44-02-05		

HDC HA 16 MC 17 - 32

Weidmüller Interface GmbH & Co. KG
Klingenbergstraße 26
D-32758 Detmold
Germany

Drawings

www.weidmueller.com



Accessories

Slotted screwdriver



VDE insulated slot-head screwdriver, SDI DIN 7437, ISO 2380/2, drive output acc. to DIN 5264, ISO 2380/1. SoftFinish grip

General ordering data

Type	SDIS 0.6X3.5X100	Version
Order No.	9008390000	Screwdriver, Screwdriver
GTIN (EAN)	4032248056354	
Qty.	1 ST	
Type	SDS 0.6X3.5X100	Version
Order No.	9008330000	Screwdriver, Screwdriver
GTIN (EAN)	4032248056286	
Qty.	1 ST	
Type	SDIS 0.8X4.0X100	Version
Order No.	9008400000	Screwdriver, Screwdriver
GTIN (EAN)	4032248056361	
Qty.	1 ST	
Type	SDS 0.8X4.0X100	Version
Order No.	9008340000	Screwdriver, Screwdriver
GTIN (EAN)	4032248056293	
Qty.	1 ST	

Crosshead screwdriver Phillips



VDE insulated crosshead screwdriver, for Phillips screws, SDIK PH DIN 7438, ISO 8764/2-PH, output to ISO 8764-PH, SoftFinish grip

General ordering data

Type	SDIK PH1	Version
Order No.	9008570000	Screwdriver, Screwdriver
GTIN (EAN)	4032248056569	
Qty.	1 ST	
Type	SDK PH1	Version
Order No.	9008480000	Screwdriver, Screwdriver
GTIN (EAN)	4032248056477	
Qty.	1 ST	

HDC HA 16 MC 17 - 32

Weidmüller Interface GmbH & Co. KG
 Klingenbergstraße 26
 D-32758 Detmold
 Germany

www.weidmueller.com

Accessories

Crimping tools



Crimping tools for turned contacts

- Ratchet guarantees precise crimping
- Release option in the event of incorrect operation
- With stop for exact positioning of the contacts.

General ordering data

Type	CTX CM 1.6/2.5	Version	
Order No.	9018490000	Pressing tool, Crimping tool for contacts, 0.14mm ² , 4mm ² , W crimp	
GTIN (EAN)	40081908884598		
Qty.	1 ST		

Type	CTIN CM 1.6/2.5	Version	
Order No.	9205430000	Pressing tool, Crimping tool for contacts, 0.14mm ² , 6mm ² , 4-indent crimp	
GTIN (EAN)	4032248733446		
Qty.	1 ST		

Contact removal tools



Weidmüller offers a variety of crimping tools, contact removal tools, and fibre optic tools.

General ordering data

Type	REMOVAL TOOL HE	Version	
Order No.	1866750000	Tools, Contact Removal Tool	
GTIN (EAN)	4032248437078		
Qty.	1 ST		

HE

Various accessories are available for our inserts. This includes coding elements for the inserts.



HDC HA 16 MC 17 - 32

Weidmüller Interface GmbH & Co. KG
 Klingenbergstraße 26
 D-32758 Detmold
 Germany

www.weidmueller.com

Accessories

General ordering data

Type	HDC HE CP	Version	
Order No.	1003240000	Heavy-duty connectors, Accessories, Coding System	
GTIN (EAN)	4032248698233		
Qty.	100 ST		

Crimp contacts HE



Crimps provide a electrical and mechanical connection between wire and contact that is both secure and reliable. The optimal crimp connection is gas-tight and corrosion-resistant.

General ordering data

Type	HDC-C-HE-SM0.5AG	Version	
Order No.	1200500000	Heavy-duty connectors, Crimp contact, HE, HEE, HQ, MixMate, Male,	
GTIN (EAN)	4008190159627	Conductor cross-section, max.: 0.5, turned, Copper alloy	
Qty.	100 ST		
Type	HDC-C-HE-SM0.75-1.00AG	Version	
Order No.	1200600000	Heavy-duty connectors, Crimp contact, HE, HEE, HQ, MixMate, Male,	
GTIN (EAN)	4008190171308	Conductor cross-section, max.: 1, turned, Copper alloy	
Qty.	100 ST		
Type	HDC-C-HE-SM1.5AG	Version	
Order No.	1200700000	Heavy-duty connectors, Crimp contact, HE, HEE, HQ, MixMate, Male,	
GTIN (EAN)	4008190074920	Conductor cross-section, max.: 1.5, turned, Copper alloy	
Qty.	100 ST		
Type	HDC-C-HE-SM2.5AG	Version	
Order No.	1200800000	Heavy-duty connectors, Crimp contact, HE, HEE, HQ, MixMate, Male,	
GTIN (EAN)	4008190131913	Conductor cross-section, max.: 2.5, turned, Copper alloy	
Qty.	100 ST		
Type	HDC-C-HE-SM4.0AG	Version	
Order No.	1200900000	Heavy-duty connectors, Crimp contact, HE, HEE, HQ, MixMate, Male,	
GTIN (EAN)	4008190115906	Conductor cross-section, max.: 4, turned, Copper alloy	
Qty.	100 ST		
Type	HDC-C-HE-SM0.5AU	Version	
Order No.	1651420000	Heavy-duty connectors, Crimp contact, HE, HEE, HQ, MixMate, Male,	
GTIN (EAN)	4008190400095	Conductor cross-section, max.: 0.5, turned, Copper alloy	
Qty.	100 ST		
Type	HDC-C-HE-SM0.75-1.00AU	Version	
Order No.	1651430000	Heavy-duty connectors, Crimp contact, HE, HEE, HQ, MixMate, Male,	
GTIN (EAN)	4008190400101	Conductor cross-section, max.: 1, turned, Copper alloy	
Qty.	100 ST		
Type	HDC-C-HE-SM1.5AU	Version	
Order No.	1651440000	Heavy-duty connectors, Crimp contact, HE, HEE, HQ, MixMate, Male,	
GTIN (EAN)	4008190400118	Conductor cross-section, max.: 1.5, turned, Copper alloy	
Qty.	100 ST		

HDC HA 16 MC 17 - 32

Weidmüller Interface GmbH & Co. KG
 Klingenbergstraße 26
 D-32758 Detmold
 Germany

www.weidmueller.com

Accessories

Type	HDC-C-HE-SM2.5AU	Version
Order No.	1651450000	Heavy-duty connectors, Crimp contact, HE, HEE, HQ, MixMate, Male,
GTIN (EAN)	4008190400125	Conductor cross-section, max.: 2.5, turned, Copper alloy
Qty.	100 ST	
Type	HDC-C-HE-SM4.0AU	Version
Order No.	1651460000	Heavy-duty connectors, Crimp contact, HE, HEE, HQ, MixMate, Male,
GTIN (EAN)	4008190400132	Conductor cross-section, max.: 4, turned, Copper alloy
Qty.	100 ST	
Type	HDC-C-HE-SM4.65AU	Version
Order No.	1116540000	Heavy-duty connectors, Crimp contact, HE, HEE, HQ, MixMate, Male,
GTIN (EAN)	4032248897261	Conductor cross-section, max.: 4.65, turned, Copper alloy
Qty.	100 ST	

DSTV

Various accessories are available for our inserts. This includes coding elements for the inserts.



General ordering data

Type	DSTV COBU5	Version
Order No.	1471500000	Heavy-duty connectors, Accessories, Coding element
GTIN (EAN)	4008190178543	
Qty.	100 ST	
Type	DSTV COST4	Version
Order No.	1471300000	Heavy-duty connectors, Accessories, Coding System
GTIN (EAN)	4008190017354	
Qty.	100 ST	