

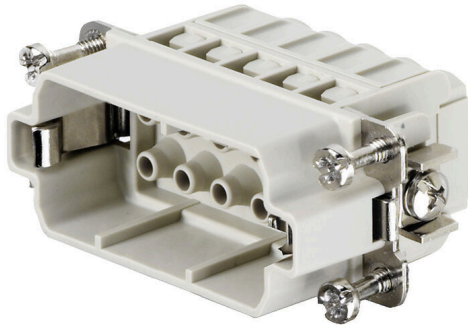
HDC HA 10 MC**Weidmüller Interface GmbH & Co. KG**

Klingenbergstraße 26

D-32758 Detmold

Germany

www.weidmueller.com



The small and thin HA series can be used wherever space is limited.

The wire connection level is designed as a crimp contact. The established crimp connection has been used as a standard for decades.

Crimp contacts are not delivered with the inserts.

Pole count: 10

Rated current: 22 A

Rated voltage 250 V

Nominal voltage acc. to UL/CSA: 600 V AC/DC

General ordering data

| | |
|------------|--|
| Version | HDC insert, Male, 250 V, 16 A, Number of poles: 10, Crimp connection, Installation size: 2 |
| Order No. | 1873870000 |
| Type | HDC HA 10 MC |
| GTIN (EAN) | 4032248458387 |
| Qty. | 1 items |

HDC HA 10 MC

Weidmüller Interface GmbH & Co. KG
 Klingenbergstraße 26
 D-32758 Detmold
 Germany

www.weidmueller.com

Technical data

Approvals

Approvals



| | |
|-------------------------|----------------------------|
| ROHS | Conform |
| UL File Number Search | UL Website |
| Certificate No. (cURus) | E92202 |

Dimensions and weights

| | | | |
|------------|---------|-----------------|-------------|
| Depth | 56.6 mm | Depth (inches) | 2.2283 inch |
| Height | 29 mm | Height (inches) | 1.1417 inch |
| Width | 23 mm | Width (inches) | 0.9055 inch |
| Net weight | 28 g | | |

Temperatures

| | |
|-------------------|-------------------|
| Limit temperature | -40 °C ... 125 °C |
|-------------------|-------------------|

Environmental Product Compliance

| | |
|--------------------------------------|--|
| RoHS Compliance Status | Compliant with exemption |
| RoHS Exemption (if applicable/known) | 6c |
| REACH SVHC | Lead 7439-92-1, Potassium perfluorobutane sulfonate 29420-49-3 |
| SCIP | b67daa31-7dca-434d-8290-da7fb52f83a2 |

| | | |
|---------------------|--------------------------|---------------------------|
| Chemical resistance | Substance | Acetone |
| | Chemical resistance | Resistant |
| | Substance | Ammonia, watery |
| | Chemical resistance | Conditionally resistant |
| | Substance | Petrol |
| | Chemical resistance | Resistant |
| | Substance | Benzene |
| | Chemical resistance | Resistant |
| | Substance | Diesel oil |
| | Chemical resistance | Conditionally resistant |
| | Substance | Acetic acid, concentrated |
| | Chemical resistance | Resistant |
| | Substance | Potassium hydroxide |
| | Chemical resistance | Conditionally resistant |
| | Substance | Methanol |
| | Chemical resistance | Conditionally resistant |
| | Substance | Motor oil |
| | Chemical resistance | Conditionally resistant |
| | Substance | Lye, diluted |
| | Chemical resistance | Resistant |
| Substance | Hydrochlorofluorocarbons | |
| Chemical resistance | Conditionally resistant | |
| Substance | Outdoor use | |
| Chemical resistance | Conditionally resistant | |

Dimensions

| | | | |
|----------------|-------|-------------------|---------|
| Width | 23 mm | Total length base | 56.6 mm |
| Height of plug | 29 mm | | |

HDC HA 10 MC

Weidmüller Interface GmbH & Co. KG

Klingenbergstraße 26

D-32758 Detmold

Germany

www.weidmueller.com

Technical data

General data

| | | | |
|---------------------------------------|---|-----------------------------------|--------|
| Number of poles | 10 | | |
| Plugging cycles, silver | ≥ 500 | | |
| Plugging cycles, gold | ≥ 500 | | |
| Type of connection | Crimp connection | | |
| Installation size | 2 | | |
| UL 94 flammability rating | V-0 | | |
| Volume resistance | ≤2 mΩ | | |
| Colour | beige | | |
| Insulation resistance | 1010 Ω | | |
| Insulating material | PC glass-fibre reinforced (UL-listed and railway-certified) | | |
| Insulating material group | IIIa | | |
| Conductor cross-section | 2.5 mm ² | | |
| Tightening torque, max. PE connection | 1.5 Nm | | |
| Type | Male | | |
| Pollution severity | 3 | | |
| Tightening torque, min. PE connection | 1.2 Nm | | |
| Basic material | Copper alloy | | |
| Series | HA | | |
| Rated voltage (DIN EN 61984) | 250 V | | |
| Rated voltage according to UL/CSA | 600 V AC/DC | | |
| Rated impulse voltage (DIN EN 61984) | 4 kV | | |
| Rated current (DIN EN 61984) | 16 A | | |
| Rated current (UR) | Wire connection cross section AWG | AWG 12 | |
| | Rated current | 20 A | |
| | Wire connection cross section AWG | AWG 14 | |
| | Rated current | 15 A | |
| | Wire connection cross section AWG | AWG 16 | |
| | Rated current | 10 A | |
| | Wire connection cross section AWG | AWG 18 | |
| | Rated current | 7 A | |
| | Wire connection cross section AWG | AWG 20 | |
| | Rated current | 5 A | |
| | Rated current (cUR) | Wire connection cross section AWG | AWG 12 |
| | | Rated current | 19 A |
| | | Wire connection cross section AWG | AWG 14 |
| | | Rated current | 15 A |
| Wire connection cross section AWG | | AWG 16 | |
| Rated current | | 12 A | |
| Wire connection cross section AWG | | AWG 18 | |
| Rated current | | 8 A | |
| Wire connection cross section AWG | | AWG 20 | |
| Rated current | | 8 A | |
| Free from halogens | | true | |
| Low smoke acc. DIN EN 45545-2 | | Yes | |
| BG | | 2 | |
| Number of signal contacts | | 0 | |
| Number of power contacts | 10 | | |

Connection data PE

| | | | |
|---------------------------------------|------------------------------------|---------------------------------------|--------------|
| Connection type PE | Screw connection, Crimp connection | Blade size, slotted (PE connection) | SD 0.8 x 4.0 |
| Stripping length PE connection | 10 mm | Tightening torque, max. PE connection | 1.5 Nm |
| Tightening torque, min. PE connection | 1.2 Nm | Fixing screw | M 4 |
| Rated cross-section | 2.5 mm ² | Wire cross section, AWG (PE), min. | AWG 20 |
| Wire cross section, AWG (PE), max. | AWG 14 | | |

Creation date 02.05.2026 02:06:56 MEZ

Catalogue status / Drawings

HDC HA 10 MC

Weidmüller Interface GmbH & Co. KG
 Klingenbergstraße 26
 D-32758 Detmold
 Germany

www.weidmueller.com

Technical data

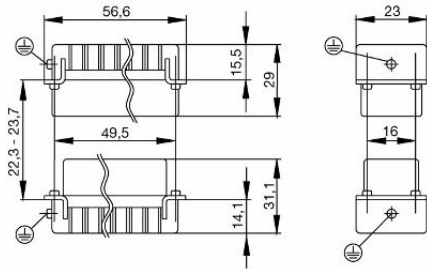
Version

| | | | |
|---|---------------------|---|---------------------|
| Wire connection cross section AWG, max. | AWG 12 | Stripping length, rated connection | 8 mm |
| Type of connection | Crimp connection | Installation size | 2 |
| Volume resistance | ≤2 mΩ | Wire connection cross section AWG, min. | AWG 20 |
| Wire cross-section, solid, max. | 2.5 mm ² | Wire cross-section, solid, min. | 0.5 mm ² |
| Wire connection cross-section, finely stranded with wire-end ferrules DIN 46228/4, max. | 2.5 mm ² | Wire connection cross-section, finely stranded with wire-end ferrules DIN 46228/4, min. | 0.5 mm ² |
| Wire connection cross section, finely stranded, max. | 2.5 mm ² | Wire connection cross section, finely stranded, min. | 0.5 mm ² |
| Conductor cross-section, max. | 4 mm ² | Conductor cross-section, min. | 0.5 mm ² |
| Basic material | Copper alloy | BG | 2 |

Classifications

| | | | |
|-------------|-------------|-------------|-------------|
| ETIM 8.0 | EC000438 | ETIM 9.0 | EC000438 |
| ETIM 10.0 | EC000438 | ECLASS 14.0 | 27-44-02-05 |
| ECLASS 15.0 | 27-44-02-05 | | |

Drawings



HDC HA 10 MC

Weidmüller Interface GmbH & Co. KG

Klingenbergstraße 26

D-32758 Detmold

Germany

www.weidmueller.com

Accessories

Slotted screwdriver



VDE insulated slot-head screwdriver, SDI DIN 7437, ISO 2380/2, drive output acc. to DIN 5264, ISO 2380/1. SoftFinish grip

General ordering data

| | | |
|------------|----------------------------|--------------------------|
| Type | SDIS 0.6X3.5X100 | Version |
| Order No. | 9008390000 | Screwdriver, Screwdriver |
| GTIN (EAN) | 4032248056354 | |
| Qty. | 1 ST | |
| Type | SDS 0.6X3.5X100 | Version |
| Order No. | 9008330000 | Screwdriver, Screwdriver |
| GTIN (EAN) | 4032248056286 | |
| Qty. | 1 ST | |
| Type | SDIS 0.8X4.0X100 | Version |
| Order No. | 9008400000 | Screwdriver, Screwdriver |
| GTIN (EAN) | 4032248056361 | |
| Qty. | 1 ST | |
| Type | SDS 0.8X4.0X100 | Version |
| Order No. | 9008340000 | Screwdriver, Screwdriver |
| GTIN (EAN) | 4032248056293 | |
| Qty. | 1 ST | |

Crosshead screwdriver Phillips



VDE insulated crosshead screwdriver, for Phillips screws, SDIK PH DIN 7438, ISO 8764/2-PH, output to ISO 8764-PH, SoftFinish grip

General ordering data

| | | |
|------------|----------------------------|--------------------------|
| Type | SDIK PH1 | Version |
| Order No. | 9008570000 | Screwdriver, Screwdriver |
| GTIN (EAN) | 4032248056569 | |
| Qty. | 1 ST | |
| Type | SDK PH1 | Version |
| Order No. | 9008480000 | Screwdriver, Screwdriver |
| GTIN (EAN) | 4032248056477 | |
| Qty. | 1 ST | |

HDC HA 10 MC

Weidmüller Interface GmbH & Co. KG
 Klingenbergstraße 26
 D-32758 Detmold
 Germany

www.weidmueller.com

Accessories

Crimping tools



Crimping tools for turned contacts

- Ratchet guarantees precise crimping
- Release option in the event of incorrect operation
- With stop for exact positioning of the contacts.

General ordering data

| | | |
|------------|----------------------------|---|
| Type | CTX CM 1.6/2.5 | Version |
| Order No. | 9018490000 | Pressing tool, Crimping tool for contacts, 0.14mm ² , 4mm ² , W crimp |
| GTIN (EAN) | 4008190884598 | |
| Qty. | 1 ST | |

| | | |
|------------|----------------------------|--|
| Type | CTIN CM 1.6/2.5 | Version |
| Order No. | 9205430000 | Pressing tool, Crimping tool for contacts, 0.14mm ² , 6mm ² , 4-indent crimp |
| GTIN (EAN) | 4032248733446 | |
| Qty. | 1 ST | |

Contact removal tools



Weidmüller offers a variety of crimping tools, contact removal tools, and fibre optic tools.

General ordering data

| | | |
|------------|----------------------------|-----------------------------|
| Type | REMOVAL TOOL HE | Version |
| Order No. | 1866750000 | Tools, Contact Removal Tool |
| GTIN (EAN) | 4032248437078 | |
| Qty. | 1 ST | |

HE

Various accessories are available for our inserts. This includes coding elements for the inserts.



HDC HA 10 MC

Weidmüller Interface GmbH & Co. KG
 Klingenbergstraße 26
 D-32758 Detmold
 Germany

www.weidmueller.com

Accessories

General ordering data

| | | | |
|------------|----------------------------|---|--|
| Type | HDC HE CP | Version | |
| Order No. | 1003240000 | Heavy-duty connectors, Accessories, Coding System | |
| GTIN (EAN) | 4032248698233 | | |
| Qty. | 100 ST | | |

Crimp contacts HE



Crimps provide a electrical and mechanical connection between wire and contact that is both secure and reliable. The optimal crimp connection is gas-tight and corrosion-resistant.

General ordering data

| | | | |
|------------|----------------------------|---|--|
| Type | HDC-C-HE-SM0.5AG | Version | |
| Order No. | 1200500000 | Heavy-duty connectors, Crimp contact, HE, HEE, HQ, MixMate, Male, | |
| GTIN (EAN) | 4008190159627 | Conductor cross-section, max.: 0.5, turned, Copper alloy | |
| Qty. | 100 ST | | |
| Type | HDC-C-HE-SM0.75-1.00AG | Version | |
| Order No. | 1200600000 | Heavy-duty connectors, Crimp contact, HE, HEE, HQ, MixMate, Male, | |
| GTIN (EAN) | 4008190171308 | Conductor cross-section, max.: 1, turned, Copper alloy | |
| Qty. | 100 ST | | |
| Type | HDC-C-HE-SM1.5AG | Version | |
| Order No. | 1200700000 | Heavy-duty connectors, Crimp contact, HE, HEE, HQ, MixMate, Male, | |
| GTIN (EAN) | 4008190074920 | Conductor cross-section, max.: 1.5, turned, Copper alloy | |
| Qty. | 100 ST | | |
| Type | HDC-C-HE-SM2.5AG | Version | |
| Order No. | 1200800000 | Heavy-duty connectors, Crimp contact, HE, HEE, HQ, MixMate, Male, | |
| GTIN (EAN) | 4008190131913 | Conductor cross-section, max.: 2.5, turned, Copper alloy | |
| Qty. | 100 ST | | |
| Type | HDC-C-HE-SM4.0AG | Version | |
| Order No. | 1200900000 | Heavy-duty connectors, Crimp contact, HE, HEE, HQ, MixMate, Male, | |
| GTIN (EAN) | 4008190115906 | Conductor cross-section, max.: 4, turned, Copper alloy | |
| Qty. | 100 ST | | |
| Type | HDC-C-HE-SM0.5AU | Version | |
| Order No. | 1651420000 | Heavy-duty connectors, Crimp contact, HE, HEE, HQ, MixMate, Male, | |
| GTIN (EAN) | 4008190400095 | Conductor cross-section, max.: 0.5, turned, Copper alloy | |
| Qty. | 100 ST | | |
| Type | HDC-C-HE-SM0.75-1.00AU | Version | |
| Order No. | 1651430000 | Heavy-duty connectors, Crimp contact, HE, HEE, HQ, MixMate, Male, | |
| GTIN (EAN) | 4008190400101 | Conductor cross-section, max.: 1, turned, Copper alloy | |
| Qty. | 100 ST | | |
| Type | HDC-C-HE-SM1.5AU | Version | |
| Order No. | 1651440000 | Heavy-duty connectors, Crimp contact, HE, HEE, HQ, MixMate, Male, | |
| GTIN (EAN) | 4008190400118 | Conductor cross-section, max.: 1.5, turned, Copper alloy | |
| Qty. | 100 ST | | |

HDC HA 10 MC

Weidmüller Interface GmbH & Co. KG
 Klingenbergstraße 26
 D-32758 Detmold
 Germany

www.weidmueller.com

Accessories

| | | |
|------------|----------------------------|---|
| Type | HDC-C-HE-SM2.5AU | Version |
| Order No. | 1651450000 | Heavy-duty connectors, Crimp contact, HE, HEE, HQ, MixMate, Male, |
| GTIN (EAN) | 4008190400125 | Conductor cross-section, max.: 2.5, turned, Copper alloy |
| Qty. | 100 ST | |
| Type | HDC-C-HE-SM4.0AU | Version |
| Order No. | 1651460000 | Heavy-duty connectors, Crimp contact, HE, HEE, HQ, MixMate, Male, |
| GTIN (EAN) | 4008190400132 | Conductor cross-section, max.: 4, turned, Copper alloy |
| Qty. | 100 ST | |
| Type | HDC-C-HE-SM4.65AU | Version |
| Order No. | 1116540000 | Heavy-duty connectors, Crimp contact, HE, HEE, HQ, MixMate, Male, |
| GTIN (EAN) | 4032248897261 | Conductor cross-section, max.: 4.65, turned, Copper alloy |
| Qty. | 100 ST | |

DSTV

Various accessories are available for our inserts. This includes coding elements for the inserts.



General ordering data

| | | |
|------------|----------------------------|--|
| Type | DSTV COBU5 | Version |
| Order No. | 1471500000 | Heavy-duty connectors, Accessories, Coding element |
| GTIN (EAN) | 4008190178543 | |
| Qty. | 100 ST | |
| Type | DSTV COST4 | Version |
| Order No. | 1471300000 | Heavy-duty connectors, Accessories, Coding System |
| GTIN (EAN) | 4008190017354 | |
| Qty. | 100 ST | |