

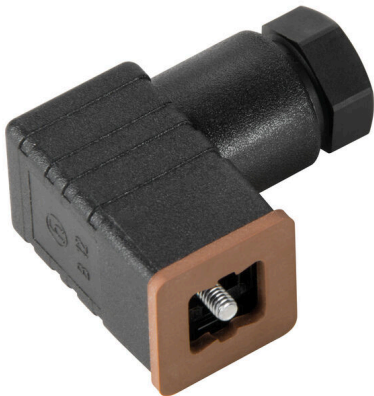
**SAIB-VSCD-4P/250/7-OB****Weidmüller Interface GmbH & Co. KG**

Klingenbergstraße 26

D-32758 Detmold

Germany

www.weidmueller.com



Individual cable lengths are often required nowadays. In order to meet these demands, Weidmüller offers a wide range of plug-in connectors for custom assembly. Customisable valve plugs are used frequently in special-purpose machine engineering. Such plugs are used to connect solenoid valves. The valve plugs are available in all standard design types. The range includes the design types A, B Industrial, B acc. to DIN, C Industrial and C acc. to DIN. The valve plugs are available in 3 and 4-pole versions without cables. A flat gasket seal is included which, when screwed on, guarantees IP 65 protection.

**General ordering data**

Version	Valve plug-in connector (field assembled), Number of poles: 4, DIN design C (8 mm), Without circuitry, 250 V, 0.25...0.75 mm <sup>2</sup>
Order No.	<a href="#">1873230000</a>
Type	SAIB-VSCD-4P/250/7-OB
GTIN (EAN)	4032248495450
Qty.	1 items

**SAIB-VSCD-4P/250/7-OB**

**Weidmüller Interface GmbH & Co. KG**  
 Klingenbergstraße 26  
 D-32758 Detmold  
 Germany

www.weidmueller.com

**Technical data**

**Approvals**

Approvals



ROHS Conform

**Dimensions and weights**

Net weight 12 g

**Environmental Product Compliance**

RoHS Compliance Status Compliant  
 REACH SVHC Lead 7439-92-1  
 SCIP ebf89fc8-a87f-4691-b87a-dfb9921774b4

**Technical data customisable plug-in connectors**

Number of poles	4	Coding	DIN design C (8 mm)
Contact surface	CuSn	LED	No
Type of connection	Screw connection	Housing main material	PA 6 GF
Insulation resistance	108 Ω	Cable diameter, max.	6 mm
Cable diameter, min.	4.5 mm	Contact material	CuZn
Conductor cross-section, max.	0.75 mm <sup>2</sup>	Conductor cross-section, min.	0.25 mm <sup>2</sup>
Nominal voltage	250 V	Nominal current	6 A
Protection degree	IP65, when screwed in	Plugging cycles	≤ 50
Pollution severity	3	Cable gland	PG 7
Shield connection	No	All valve plugs are fitted with protective circuits	Without circuitry
Temperature range of housing	-25...+90 °C	Connection cross-section, max.	0.75 mm <sup>2</sup>
Connection cross-section, min.	0.25 mm <sup>2</sup>		

**Classifications**

ETIM 8.0	EC003623	ETIM 9.0	EC003623
ETIM 10.0	EC003623	ECLASS 14.0	27-44-01-05
ECLASS 15.0	27-44-01-05		

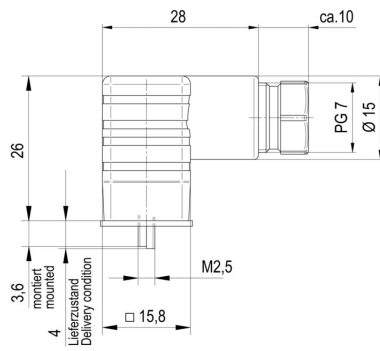
**SAIB-VSCD-4P/250/7-OB**

**Weidmüller Interface GmbH & Co. KG**  
Klingenbergstraße 26  
D-32758 Detmold  
Germany

**Drawings**

[www.weidmueller.com](http://www.weidmueller.com)

**Dimensioned drawing**



**Pole scheme**

