

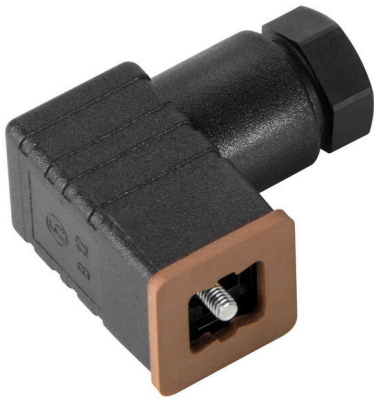
SAIB-VSC-4P/250/7-OB**Weidmüller Interface GmbH & Co. KG**

Klingenbergstraße 26

D-32758 Detmold

Germany

www.weidmueller.com



Individual cable lengths are often required nowadays. In order to meet these demands, Weidmüller offers a wide range of plug-in connectors for custom assembly. Customisable valve plugs are used frequently in special-purpose machine engineering. Such plugs are used to connect solenoid valves. The valve plugs are available in all standard design types. The range includes the design types A, B Industrial, B acc. to DIN, C Industrial and C acc. to DIN. The valve plugs are available in 3 and 4-pole versions without cables. A flat gasket seal is included which, when screwed on, guarantees IP 65 protection.

General ordering data

Version	Valve plug-in connector (field assembled), Number of poles: 4, Industrial design C (9.4 mm), Without circuitry, 250 V, 0.25...0.75 mm ²
Order No.	1873210000
Type	SAIB-VSC-4P/250/7-OB
GTIN (EAN)	4032248495436
Qty.	1 items

SAIB-VSC-4P/250/7-OB

Weidmüller Interface GmbH & Co. KG
 Klingenbergstraße 26
 D-32758 Detmold
 Germany

www.weidmueller.com

Technical data

Approvals

Approvals



ROHS Conform

Dimensions and weights

Net weight 13 g

Environmental Product Compliance

RoHS Compliance Status Compliant
 REACH SVHC Lead 7439-92-1
 SCIP ebf89fc8-a87f-4691-b87a-dfb9921774b4

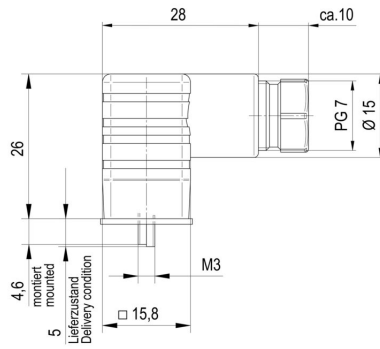
Technical data customisable plug-in connectors

Number of poles	4	Coding	Industrial design C (9.4 mm)
Contact surface	CuSn	LED	No
Type of connection	Screw connection	Housing main material	PA 6 GF
Insulation resistance	108 Ω	Cable diameter, max.	6 mm
Cable diameter, min.	4.5 mm	Contact material	CuZn
Conductor cross-section, max.	0.75 mm ²	Conductor cross-section, min.	0.25 mm ²
Nominal voltage	250 V	Nominal current	6 A
Protection degree	IP65, when screwed in	Plugging cycles	≤ 50
Pollution severity	3	Cable gland	PG 7
Shield connection	No	All valve plugs are fitted with protective circuits	Without circuitry
Temperature range of housing	-25...+90 °C	Connection cross-section, max.	0.75 mm ²
Connection cross-section, min.	0.25 mm ²		

Classifications

ETIM 8.0	EC003623	ETIM 9.0	EC003623
ETIM 10.0	EC003623	ECLASS 14.0	27-44-01-05
ECLASS 15.0	27-44-01-05		

Dimensioned drawing



Pole scheme

