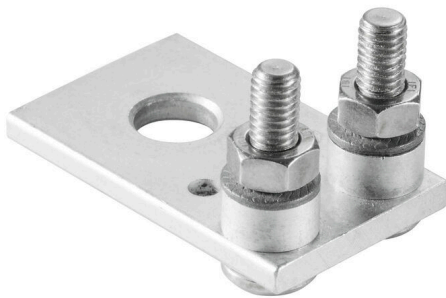


SMSE WF10/2XM6

Weidmüller Interface GmbH & Co. KG
Klingenbergstraße 26
D-32758 Detmold
Germany

www.weidmueller.com

Product image

The distribution or multiplication of a potential to adjoining terminal blocks is realized via a cross-connection. Additional wiring effort can be easily avoided. Even if the poles are broken out, contact reliability in the terminal blocks is still ensured. Our portfolio offers pluggable and screwable cross-connection systems for modular terminal blocks.

General ordering data

Version	Bolt-type screw terminals, Busbar, Number of poles:
Order No.	1868880000
Type	SMSE WF10/2XM6
GTIN (EAN)	4032248499755
Qty.	10 items

SMSE WF10/2XM6

Weidmüller Interface GmbH & Co. KG
 Klingenbergstraße 26
 D-32758 Detmold
 Germany

www.weidmueller.com

Technical data

Approvals

ROHS	Conform
------	---------

Dimensions and weights

Depth	28.5 mm	Depth (inches)	1.122 inch
Height	48 mm	Height (inches)	1.8898 inch
Width	30 mm	Width (inches)	1.1811 inch
Net weight	77.7 g		

Temperatures

Storage temperature	-25 °C...55 °C	Ambient temperature	-5 °C...40 °C
---------------------	----------------	---------------------	---------------

Environmental Product Compliance

RoHS Compliance Status	Compliant with exemption
RoHS Exemption (if applicable/known)	6c
REACH SVHC	Lead 7439-92-1
SCIP	0b4175f8-aa16-44b6-bff0-e8333344a12b

Material data

Basic material	Copper	Surface finish	tinned
Colour	Silver grey		

Additional technical data

Installation advice	Direct mounting
---------------------	-----------------

General

Installation advice	Direct mounting	Surface finish	tinned
---------------------	-----------------	----------------	--------

Classifications

ETIM 8.0	EC002848	ETIM 9.0	EC002848
ETIM 10.0	EC002848	ECLASS 14.0	27-14-11-92
ECLASS 15.0	27-14-11-92		

Drawings

