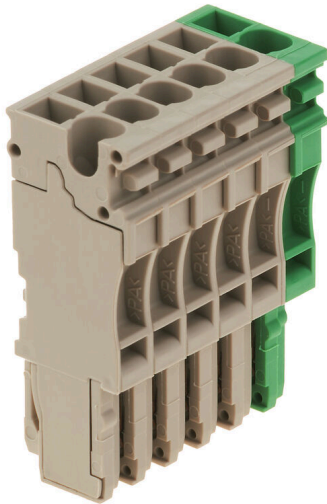


**ZP 2.5/1AN/6 GN/BE**

**Weidmüller Interface GmbH & Co. KG**  
Klingenbergstraße 26  
D-32758 Detmold  
Germany

[www.weidmueller.com](http://www.weidmueller.com)

**Product image**

The plugs for our WeiCoS-System are available for all different connection systems. The product range includes preassembled connectors from 1 to 10 poles and the possibility of an individual assembly. This ensures maximum flexibility for every application. The customized accessories increase the safety and protection against environmental influences.

**General ordering data**

|            |                                                     |
|------------|-----------------------------------------------------|
| Version    | Z-series, Plug-in connector, beige, Direct mounting |
| Order No.  | <a href="#">1867130000</a>                          |
| Type       | ZP 2.5/1AN/6 GN/BE                                  |
| GTIN (EAN) | 4032248475667                                       |
| Qty.       | 25 items                                            |

## ZP 2.5/1AN/6 GN/BE

**Weidmüller Interface GmbH & Co. KG**  
 Klingenbergstraße 26  
 D-32758 Detmold  
 Germany

www.weidmueller.com

## Technical data

### Approvals

Approvals



ROHS Conform

UL File Number Search [UL Website](#)

Certificate No. (cURus) E60693

### Dimensions and weights

|            |         |                 |             |
|------------|---------|-----------------|-------------|
| Depth      | 41 mm   | Depth (inches)  | 1.6142 inch |
| Height     | 16 mm   | Height (inches) | 0.6299 inch |
| Width      | 30.6 mm | Width (inches)  | 1.2047 inch |
| Net weight | 19.28 g |                 |             |

### Temperatures

|                                  |                |                                  |                |
|----------------------------------|----------------|----------------------------------|----------------|
| Storage temperature              | -25 °C...55 °C | Ambient temperature              | -50 °C...75 °C |
| Continuous operating temp., min. | -50 °C         | Continuous operating temp., max. | 120 °C         |

### Environmental Product Compliance

|                        |                             |
|------------------------|-----------------------------|
| RoHS Compliance Status | Compliant without exemption |
| REACH SVHC             | No SVHC above 0.1 wt%       |

### Material data

|                           |       |        |            |
|---------------------------|-------|--------|------------|
| Basic material            | Wemid | Colour | dark beige |
| UL 94 flammability rating | V-0   |        |            |

### System specifications

|                                     |                                                        |                                   |    |
|-------------------------------------|--------------------------------------------------------|-----------------------------------|----|
| Version                             | Set of connectors, pluggable, Tension-clamp connection | End cover plate required          | No |
| Number of potentials                | 6                                                      | Number of levels                  | 1  |
| Number of clamping points per level | 1                                                      | Levels cross-connected internally | No |
| PE connection                       | Yes                                                    |                                   |    |

### Additional technical data

|                  |         |                     |                 |
|------------------|---------|---------------------|-----------------|
| Open sides       | closed  | Installation advice | Direct mounting |
| Type of mounting | Plugged |                     |                 |

### CSA rating data

|                                   |                |                                   |        |
|-----------------------------------|----------------|-----------------------------------|--------|
| Voltage size C (cCSAus)           | 300 V          | Current size D (cCSAus)           | 5 A    |
| Wire cross section min. (cCSAusX) | 26 AWG         | Current size C (cCSAus)           | 20 A   |
| Certificate number (cCSAus)       | 154685-1460993 | Wire cross section max. (cCSAusX) | 12 AWG |
| Voltage size D (cCSAus)           | 600 V          |                                   |        |

### Conductors for clamping (rated connection)

|                      |    |
|----------------------|----|
| Gauge to IEC 60947-1 | A2 |
|----------------------|----|

## ZP 2.5/1AN/6 GN/BE

**Weidmüller Interface GmbH & Co. KG**  
 Klingenbergstraße 26  
 D-32758 Detmold  
 Germany

www.weidmueller.com

### Technical data

|                                                                                         |                                        |         |                      |
|-----------------------------------------------------------------------------------------|----------------------------------------|---------|----------------------|
| Wire connection cross section AWG, max.                                                 | AWG 12                                 |         |                      |
| Connection direction                                                                    | top                                    |         |                      |
| Stripping length                                                                        | 10 mm                                  |         |                      |
| Type of connection                                                                      | Plug-in connection                     |         |                      |
| Number of connections                                                                   | 6                                      |         |                      |
| Clamping range, max.                                                                    | 4 mm <sup>2</sup>                      |         |                      |
| Clamping range, min.                                                                    | 0.13 mm <sup>2</sup>                   |         |                      |
| Blade size                                                                              | 0.6 x 3.5 mm                           |         |                      |
| Wire connection cross section AWG, min.                                                 | AWG 12                                 |         |                      |
| Wire connection cross-section, finely stranded with wire-end ferrules DIN 46228/4, min. | 0.13 mm <sup>2</sup>                   |         |                      |
| Wire connection cross-section, finely stranded with wire-end ferrules DIN 46228/1, max. | 2.5 mm <sup>2</sup>                    |         |                      |
| Wire connection cross-section, finely stranded with wire-end ferrules DIN 46228/1, min. | 0.13 mm <sup>2</sup>                   |         |                      |
| Wire connection cross section, finely stranded, max.                                    | 4 mm <sup>2</sup>                      |         |                      |
| Wire connection cross section, finely stranded, min.                                    | 0.13 mm <sup>2</sup>                   |         |                      |
| Connection cross-section, stranded, min.                                                | 0.13 mm <sup>2</sup>                   |         |                      |
| Wire connection cross-section, solid core, max.                                         | 4 mm <sup>2</sup>                      |         |                      |
| Wire connection cross-section, solid core, min.                                         | 0.13 mm <sup>2</sup>                   |         |                      |
| Tube length for wire-end ferrule with plastic collar DIN 46228/4                        | Cross-section for conductor connection | nominal | 0.5 mm <sup>2</sup>  |
|                                                                                         | Cross-section for conductor connection | nominal | 0.75 mm <sup>2</sup> |
|                                                                                         | Cross-section for conductor connection | nominal | 1 mm <sup>2</sup>    |
|                                                                                         | Cross-section for conductor connection | nominal | 1.5 mm <sup>2</sup>  |
|                                                                                         | Cross-section for conductor connection | nominal | 2.5 mm <sup>2</sup>  |
| Tube length for wire-end ferrule without plastic collar DIN 46228/1                     | Cross-section for conductor connection | nominal | 0.5 mm <sup>2</sup>  |
|                                                                                         | Cross-section for conductor connection | nominal | 0.75 mm <sup>2</sup> |
|                                                                                         | Cross-section for conductor connection | nominal | 1 mm <sup>2</sup>    |
|                                                                                         | Cross-section for conductor connection | nominal | 1.5 mm <sup>2</sup>  |
|                                                                                         | Cross-section for conductor connection | nominal | 2.5 mm <sup>2</sup>  |

### General

|                     |                                  |                                         |        |
|---------------------|----------------------------------|-----------------------------------------|--------|
| Number of poles     | 6                                | Wire connection cross section AWG, max. | AWG 12 |
| Installation advice | Direct mounting                  | Wire connection cross section AWG, min. | AWG 12 |
| Standards           | In accordance with IEC 60947-7-1 |                                         |        |

### Rating data

|                                                      |                     |                                                  |                                  |
|------------------------------------------------------|---------------------|--------------------------------------------------|----------------------------------|
| Rated cross-section                                  | 2.5 mm <sup>2</sup> | Rated voltage                                    | 500 V                            |
| Rated voltage to adjoining terminal                  | 500 V               | Max. voltage of clamp support & pluggable system | 690 V                            |
| Rated DC voltage                                     | 500 V               | Nominal current                                  | 24 A                             |
| Current at maximum wires                             | 24 A                | Standards                                        | In accordance with IEC 60947-7-1 |
| Volume resistance according to IEC 60947-7-x         | 1.33 mΩ             | Rated impulse withstand voltage                  | 6 kV                             |
| Rated impulse withstand voltage to adjacent terminal | 6 kV                | Power loss in accordance with IEC 60947-7-x      | 0.77 W                           |

**ZP 2.5/1AN/6 GN/BE**

**Weidmüller Interface GmbH & Co. KG**  
Klingenbergstraße 26  
D-32758 Detmold  
Germany

[www.weidmueller.com](http://www.weidmueller.com)

**Technical data****UL rating data**

|                                            |        |                                          |        |
|--------------------------------------------|--------|------------------------------------------|--------|
| Conductor size Factory wiring max. (cURus) | 12 AWG | Voltage size D (cURus)                   | 600 V  |
| Certificate No. (cURus)                    | E60693 | Conductor size Field wiring min. (cURus) | 26 AWG |
| Conductor size Factory wiring min. (cURus) | 26 AWG | Voltage size C (cURus)                   | 300 V  |
| Current size C (cURus)                     | 20 A   | Current size D (cURus)                   | 5 A    |
| Conductor size Field wiring max. (cURus)   | 12 AWG |                                          |        |

**Classifications**

|             |             |             |             |
|-------------|-------------|-------------|-------------|
| ETIM 8.0    | EC002848    | ETIM 9.0    | EC002848    |
| ETIM 10.0   | EC002848    | ECLASS 14.0 | 27-25-03-90 |
| ECLASS 15.0 | 27-25-03-90 |             |             |