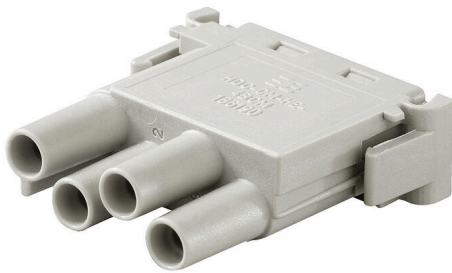


HDC CM HE 4 FC**Weidmüller Interface GmbH & Co. KG**Klingenbergstraße 26
D-32758 Detmold
Germany

www.weidmueller.com



The HE-ConCept module is designed as a power module. The module is assembled with HE crimp contacts. A variety of wire cross-sections and two surfaces (silver and gold) are possible.

A customized contact removal tool is available for removing the contacts.

The power modules can be ordered with or without the integrated module release aid. A removal tool is available for modules that do not have the integrated module release aid.

General ordering data

Version	Heavy-duty connectors, HDC insert, ConCept module
Order No.	1861900000
Type	HDC CM HE 4 FC
GTIN (EAN)	4032248425044
Qty.	10 items

HDC CM HE 4 FC

Weidmüller Interface GmbH & Co. KG

Klingenbergstraße 26
D-32758 Detmold
Germany

www.weidmueller.com

Technical data

Approvals

Approvals



ROHS Conform

UL File Number Search [UL Website](#)

Certificate No. (cURus) E92202

Dimensions and weights

Depth	34 mm	Depth (inches)	1.3386 inch
Height	38.5 mm	Height (inches)	1.5157 inch
Width	11.4 mm	Width (inches)	0.4488 inch
Net weight	8 g		

Environmental Product Compliance

RoHS Compliance Status	Compliant without exemption
REACH SVHC	Potassium perfluorobutane sulfonate 29420-49-3
SCIP	1609748e-c278-4c9b-b3d1-e6215d2988cd

ConCept Pneumatic module

UL 94 flammability rating	V-0	Colour	beige
---------------------------	-----	--------	-------

Dimensions

Width	11.4 mm	Total length base	34 mm
Height of socket	38.5 mm		

General data

Number of poles	4	Type of connection	Crimp connection
UL 94 flammability rating	V-0	Volume resistance	≤2 mΩ
Colour	beige	Insulation resistance	1012 Ω
Insulating material	PC glass-fibre reinforced (UL-listed and railway-certified)	Type	Female
Surge voltage category	III	Pollution severity	3
Basic material	Polycarbonate, glass fibre reinforced	Series	ConCept module
Rated voltage (DIN EN 61984)	630 V	Rated impulse voltage (DIN EN 61984)	8 kV
Rated current (DIN EN 61984)	25 A	Free from halogens	false
Low smoke acc. DIN EN 45545-2	Yes		

Connection data PE

Connection type PE	Screw connection via module frame
--------------------	-----------------------------------

Version

Wire connection cross section AWG, max.	AWG 12	Stripping length, rated connection	7.5 mm
Type of connection	Crimp connection	Volume resistance	≤2 mΩ

HDC CM HE 4 FC

Weidmüller Interface GmbH & Co. KG
Klingenbergstraße 26
D-32758 Detmold
Germany

www.weidmueller.com

Technical data

Wire connection cross section AWG, min.	AWG 20	Conductor cross-section, max.	4 mm ²
Conductor cross-section, min.	0.5 mm ²	Basic material	Polycarbonate, glass fibre reinforced

Classifications

ETIM 8.0	EC000438	ETIM 9.0	EC000438
ETIM 10.0	EC000438	ECLASS 14.0	27-44-02-05
ECLASS 15.0	27-44-02-05		

HDC CM HE 4 FC

Weidmüller Interface GmbH & Co. KG
Klingenbergstraße 26
D-32758 Detmold
Germany

Drawings

www.weidmueller.com

