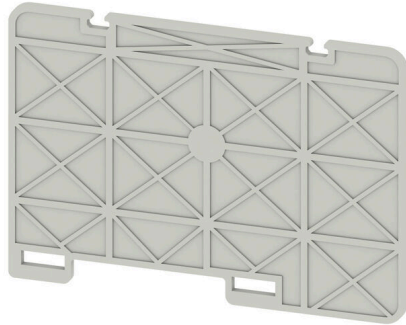


**WTW WF10-8/2BZ****Weidmüller Interface GmbH & Co. KG**Klingenbergstraße 26  
D-32758 Detmold  
Germany

www.weidmueller.com



Partition plates and end plates are essential accessories for terminal blocks. Partition plates provide optical and electrical separation of different potentials and functional groups, increasing safety and ensuring a clear structure inside the control cabinet. End plates close the terminal block row on the sides, protect against contact with live parts, and ensure a clean, stable finish. Both components are precisely matched to the respective Weidmüller terminal block series, contributing to safe, compliant, and professional wiring.

**General ordering data**

Version	Partition plate (terminal), grey, Height: 95 mm, Width: 2 mm, V-0
Order No.	<a href="#">1861650000</a>
Type	WTW WF10-8/2BZ
GTIN (EAN)	4032248498048
Qty.	20 items

**Technical data**

**Approvals**

ROHS	Conform
------	---------

**Dimensions and weights**

Depth	66.2 mm	Depth (inches)	2.6063 inch
Height	95 mm	Height (inches)	3.7401 inch
Width	2 mm	Width (inches)	0.0787 inch
Mounting dimension - width	2 mm	Net weight	8.98 g

**Temperatures**

Storage temperature	-25 °C...55 °C	Ambient temperature	-5 °C...40 °C
---------------------	----------------	---------------------	---------------

**Environmental Product Compliance**

RoHS Compliance Status	Compliant without exemption
REACH SVHC	No SVHC above 0.1 wt%

**Material data**

Colour	grey	UL 94 flammability rating	V-0
--------	------	---------------------------	-----

**System specifications**

Version	End and intermediate plate
---------	----------------------------

**Additional technical data**

Snap-on	No	Installation advice	Direct mounting
---------	----	---------------------	-----------------

**General**

Installation advice	Direct mounting
---------------------	-----------------

**Classifications**

ETIM 8.0	EC000886	ETIM 9.0	EC000886
ETIM 10.0	EC000886	ECLASS 14.0	27-25-03-01
ECLASS 15.0	27-25-03-01		