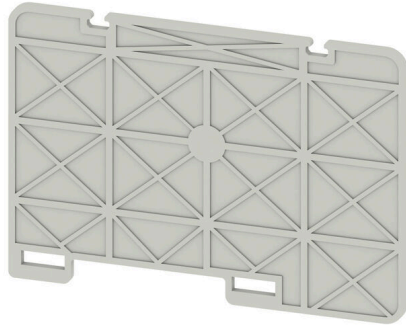


WTW WF10-8/2BZ**Weidmüller Interface GmbH & Co. KG**

Klingenbergstraße 26

D-32758 Detmold

Germany

www.weidmueller.com

Partition plates and end plates are essential accessories for terminal blocks. Partition plates provide optical and electrical separation of different potentials and functional groups, increasing safety and ensuring a clear structure inside the control cabinet. End plates close the terminal block row on the sides, protect against contact with live parts, and ensure a clean, stable finish. Both components are precisely matched to the respective Weidmüller terminal block series, contributing to safe, compliant, and professional wiring.

General ordering data

Version	Partition plate (terminal), grey, Height: 95 mm, Width: 2 mm, V-0
Order No.	1861650000
Type	WTW WF10-8/2BZ
GTIN (EAN)	4032248498048
Qty.	20 items

WTW WF10-8/2BZ

Weidmüller Interface GmbH & Co. KG
 Klingenbergstraße 26
 D-32758 Detmold
 Germany

www.weidmueller.com

Technical data

Approvals

ROHS	Conform
------	---------

Dimensions and weights

Depth	66.2 mm	Depth (inches)	2.6063 inch
Height	95 mm	Height (inches)	3.7401 inch
Width	2 mm	Width (inches)	0.0787 inch
Mounting dimension - width	2 mm	Net weight	8.98 g

Temperatures

Storage temperature	-25 °C...55 °C	Ambient temperature	-5 °C...40 °C
---------------------	----------------	---------------------	---------------

Environmental Product Compliance

RoHS Compliance Status	Compliant without exemption
REACH SVHC	No SVHC above 0.1 wt%

Material data

Colour	grey	UL 94 flammability rating	V-0
--------	------	---------------------------	-----

System specifications

Version	End and intermediate plate
---------	----------------------------

Additional technical data

Snap-on	No	Installation advice	Direct mounting
---------	----	---------------------	-----------------

General

Installation advice	Direct mounting
---------------------	-----------------

Classifications

ETIM 8.0	EC000886	ETIM 9.0	EC000886
ETIM 10.0	EC000886	ECLASS 14.0	27-25-03-01
ECLASS 15.0	27-25-03-01		