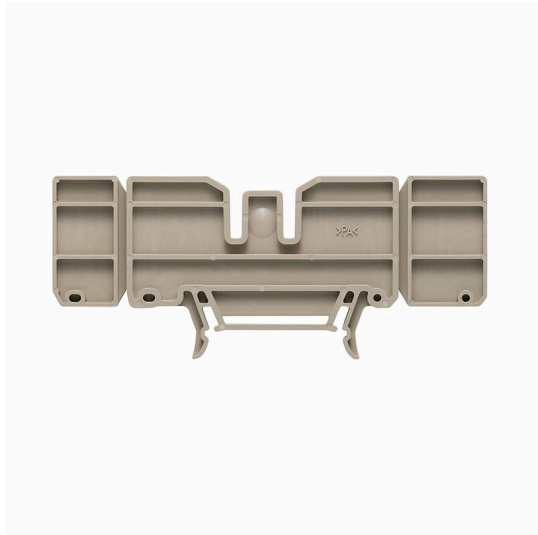


IEPL**Weidmüller Interface GmbH & Co. KG**

Klingenbergstraße 26

D-32758 Detmold

Germany

www.weidmueller.com**Product image**

The distribution or multiplication of a potential to adjoining terminal blocks is realized via a cross-connection. Additional wiring effort can be easily avoided. Even if the poles are broken out, contact reliability in the terminal blocks is still ensured. Our portfolio offers pluggable and screwable cross-connection systems for modular terminal blocks.

General ordering data

Version	I-Series, Accessories, End plate, Intermediate plate, dark beige, 4 mm
Order No.	1859570000
Type	IEPL
GTIN (EAN)	4032248465750
Qty.	25 items

IEPL

Weidmüller Interface GmbH & Co. KG

Klingenbergstraße 26

D-32758 Detmold

Germany

www.weidmueller.com

Technical data

Approvals

ROHS	Conform
------	---------

Dimensions and weights

Depth	44.85 mm	Depth (inches)	1.7657 inch
Height	105.9 mm	Height (inches)	4.1693 inch
Width	4 mm	Width (inches)	0.1575 inch
Net weight	6.72 g		

Temperatures

Continuous operating temp., min.	-50 °C	Continuous operating temp., max.	120 °C
----------------------------------	--------	----------------------------------	--------

Environmental Product Compliance

RoHS Compliance Status	Compliant without exemption
REACH SVHC	No SVHC above 0.1 wt%

Material data

Basic material	Wemid	Colour	dark beige
UL 94 flammability rating	V-0		

System specifications

Version	Intermediate plate	Mounting rail	TS 35
---------	--------------------	---------------	-------

Additional technical data

Snap-on	Yes	Type of fixing	Snap-on
Installation advice	Direct mounting		

Dimensions

TS 35 offset	53 mm
--------------	-------

General

Installation advice	Direct mounting	Mounting rail	TS 35
---------------------	-----------------	---------------	-------

Classifications

ETIM 8.0	EC000886	ETIM 9.0	EC000886
ETIM 10.0	EC000886	ECLASS 14.0	27-25-03-01
ECLASS 15.0	27-25-03-01		