

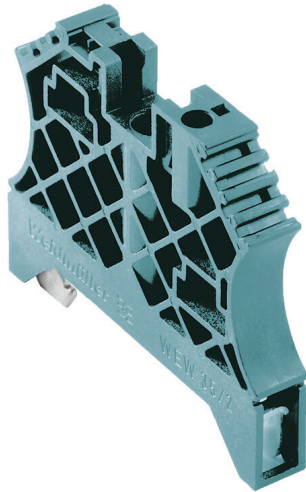
WEW 35/2 GR**Weidmüller Interface GmbH & Co. KG**

Klingenbergstraße 26

D-32758 Detmold

Germany

www.weidmueller.com

Product image

Weidmüller's range of products includes end brackets that guarantee a permanent, reliable mounting on the terminal rail and prevent sliding. Versions with and without screws are available. The end brackets include marking options, also for group markers, and also a test plug holder.

General ordering data

Version	End bracket, grey, TS 35, V-2, Wemid, Width: 8 mm, 100 °C
Order No.	1859200000
Type	WEW 35/2 GR
GTIN (EAN)	4032248411658
Qty.	50 items

WEW 35/2 GR

Weidmüller Interface GmbH & Co. KG
 Klingenbergstraße 26
 D-32758 Detmold
 Germany

www.weidmueller.com

Technical data

Approvals

ROHS	Conform
------	---------

Dimensions and weights

Depth	46.5 mm	Depth (inches)	1.8307 inch
Height	56 mm	Height (inches)	2.2047 inch
Width	8 mm	Width (inches)	0.315 inch
Net weight	12.36 g		

Temperatures

Ambient temperature	-5 °C...40 °C	Continuous operating temp., min.	-50 °C
Continuous operating temp., max.	100 °C		

Environmental Product Compliance

RoHS Compliance Status	Compliant without exemption		
REACH SVHC	No SVHC above 0.1 wt%		
Product Carbon Footprint	Cradle to gate	0.150 kg CO2eq.	

Material data

Basic material	Wemid	Colour	grey
UL 94 flammability rating	V-2		

System specifications

Version	For the terminals	Mounting rail	TS 35
---------	-------------------	---------------	-------

Additional technical data

Installation advice	Direct mounting	Type of mounting	when screwed in
Locking	for screw fixing		

Conductors for clamping (rated connection)

Tightening torque, max.	1 Nm	Tightening torque, min.	0.5 Nm
-------------------------	------	-------------------------	--------

General

Installation advice	Direct mounting	Mounting rail	TS 35
---------------------	-----------------	---------------	-------

Classifications

ETIM 8.0	EC001041	ETIM 9.0	EC001041
ETIM 10.0	EC001041	ECLASS 14.0	27-25-03-02
ECLASS 15.0	27-25-03-02		